

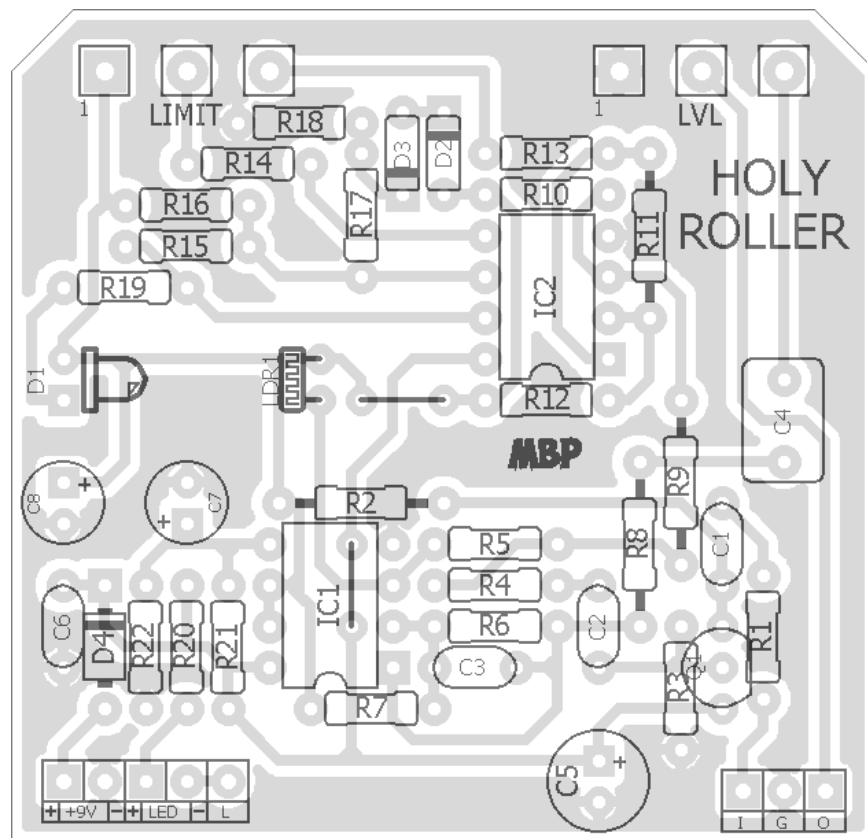
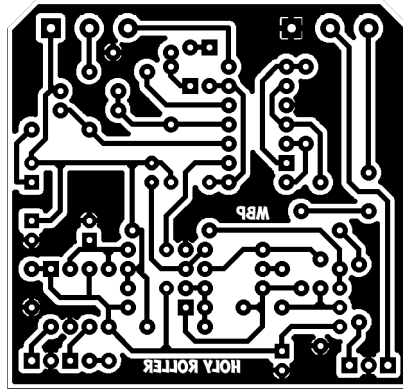
# HOLY ROLLER

**FX TYPE: Limiter**

## Based on the Bajamn LA2A Optical Limiter

© 2016 madbeanpedals

**2.1" W x 2.03" H**



- note the jumpers -

*Etcher's Paradise projects are intended for DIY use only! Commercial pedal manufacturing using these materials is strictly forbidden.*

B.O.M.					
Resistors		Caps		Diodes	
R1	10k	C1	10n	D1	LED
R2	1M	C2	100n	D2, D3	1n914
R3	68k	C3	10pF	D4	1N5817
R4	68k	C4	1uF	Photocell	
R5	2k7	C5	100uF	LDR1	*notes
R6	4k7	C6	100n	Transistor	
R7	560R	C7	10uF	Q1	MPF102
R8	560R	C8	10uF	IC	
R9	1k			IC1, 2	LF353
R10	100k			Pots	
R11	10k			LIMIT	10kB
R12	1k5			LVL	10kB
R13	1k				
R14	560R				
R15	10k				
R16	1k5				
R17	10k				
R18	4k7				
R19	560R				
R20	4k7				
R21	47k				
R22	47k				

Shopping List				
Value	QTY	Type	Rating	
560R	4	Metal / Carbon Film	1/4W	
1k	2	Metal / Carbon Film	1/4W	
1k5	2	Metal / Carbon Film	1/4W	
2k7	1	Metal / Carbon Film	1/4W	
4k7	3	Metal / Carbon Film	1/4W	
10k	4	Metal / Carbon Film	1/4W	
47k	2	Metal / Carbon Film	1/4W	
68k	2	Metal / Carbon Film	1/4W	
100k	1	Metal / Carbon Film	1/4W	
1M	1	Metal / Carbon Film	1/4W	
10pF	1	Ceramic	16v min.	
10n	1	Film	16v min.	
100n	2	Film	16v min.	
1uF	1	Film	16v min.	
10uF	2	Electrolytic	16v min.	
100uF	1	Electrolytic	16v min.	
1n914	2			
1N5817	1			
LED	1	Red or White Diffused	3 or 5mm	
LDR1	1	8104, 9200?		
MPF102	1	or, 2n5457		
LF353	2			
10kB	2	PCB Right Angle		

Don't know the exact photocell to recommend, but my guess is use one with a dark resistance of 1M to 5M. The 8104 or 9200 might work well.

## 1590B Drill Guide

4.43"W x 6.47"H

