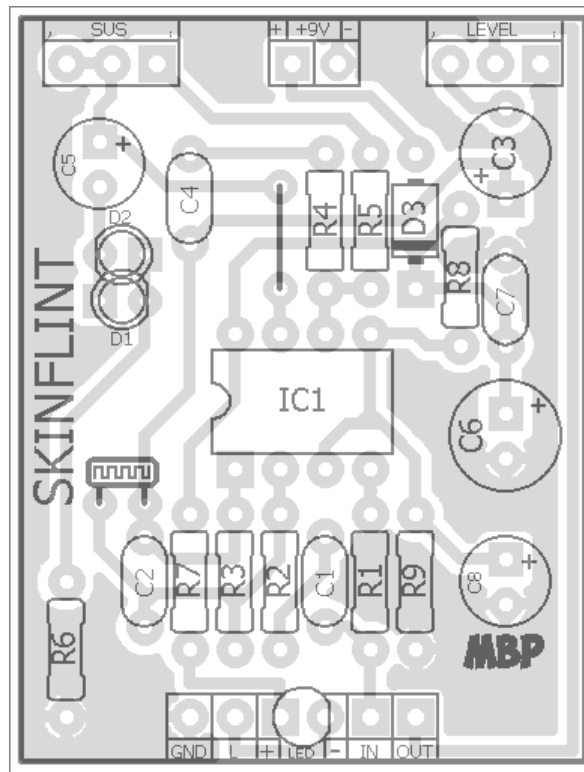


# SKINFLINT

**FX TYPE: Compressor**

Based on the mictester Really Cheap Compressor

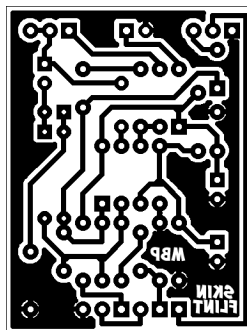
© 2017 madbeanpedals



Note the jumper

Bend D1 and D2 at 90° to face the photocell. Create a light shield for best performance.

1.3" W x 1.7" H



*Etcher's Paradise projects are intended for DIY use only! Commercial pedal manufacturing using these materials is strictly forbidden*

B.O.M.					
Resistors		Caps		Diodes	
R1	1M	C1	15n	D1, D2	LED
R2	220k	C2	22pF	D3	1N5817
R3	2M2	C3	2u2	IC	
R4	10k	C4	100n	IC1	TL072
R5	10k	C5	1uF	Photocell	
R6	1k	C6	100uF	LDR1	1M Dark
R7	4k7	C7	100n	Pots	
R8	33k	C8	10uF	LEVEL	10kA
R9	33k			SUS	100kA

Shopping List				
Value	QTY	Type	Rating	
1k	1	Metal / Carbon Film	1/4W	
4k7	1	Metal / Carbon Film	1/4W	
10k	2	Metal / Carbon Film	1/4W	
33k	2	Metal / Carbon Film	1/4W	
220k	1	Metal / Carbon Film	1/4W	
1M	1	Metal / Carbon Film	1/4W	
2M2	1	Metal / Carbon Film	1/4W	
22pF	1	Ceramic / MLCC	16v min.	
15n	1	Film	16v min.	
100n	2	Film	16v min.	
1uF	1	Electrolytic	16v min.	
2u2	1	Electrolytic	16v min.	
10uF	1	Electrolytic	16v min.	
100uF	1	Electrolytic	16v min.	
LED	2	Green, Diffused	3mm	
1N5817	1			
TL072	1			
1M Dark	1	Photocell		
10kA	1	Solder Lug	9 or 12mm	
100kA	1	Solder Lug	10 or 12mm	

Mod: Make C5 10uF for improved performance on lower strings

<http://www.diystompboxes.com/smfforum/index.php?topic=110831.0>

## 1590A Drill Guide

3.63" W x 5.7" H

