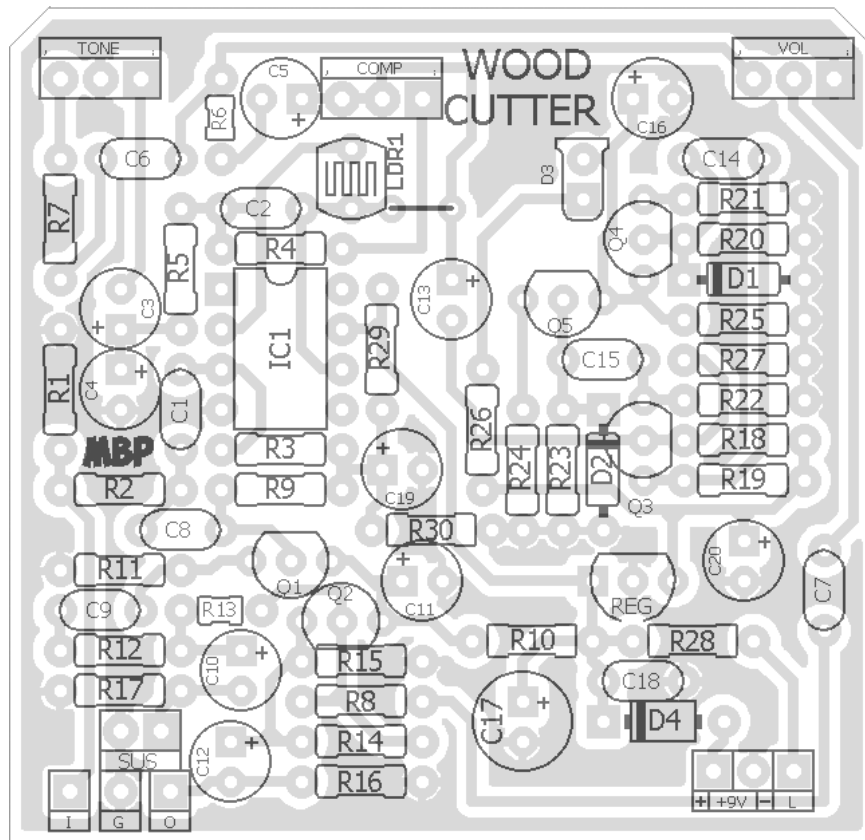


WOODCUTTER

FX TYPE: Compressor

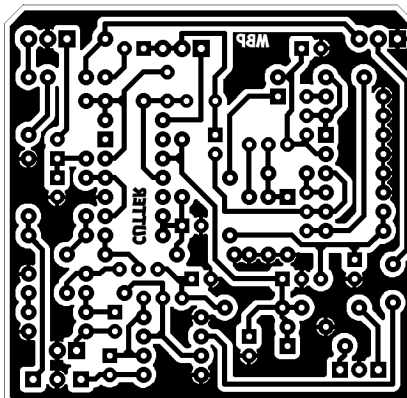
Based on the Mad Professor® Forrest Green Compressor™

© 2016 madbeanpedals



- Note the jumper -

2.15" W x 2.08" H



Etcher's Paradise projects are intended for DIY use only! Commercial pedal manufacturing using these materials is strictly forbidden.

| B.O.M. | | | | | |
|-----------|------|------|-------|-------------|-----------|
| Resistors | | Caps | | Diodes | |
| R1 | 1M | C1 | 47n | D1, D2 | 1n914 |
| R2 | 5k6 | C2 | 47pF | D3 | LED |
| R3 | 1M | C3 | 22uF | D4 | 1N5817 |
| R4 | 2k4 | C4 | 1uF | Transistors | |
| R5 | 1k | C5 | 1uF | Q1 | 2SK170 |
| R6 | 5k6 | C6 | 100n | Q2 | BC560C |
| R7 | 5k6 | C7 | 220n | Q3 - Q5 | BC550C |
| R8 | 14k7 | C8 | 47n | Photocell | |
| R9 | 2M | C9 | 220n | LDR1 | Photocell |
| R10 | 470R | C10 | 22uF | Regulator | |
| R11 | 10k | C11 | 22uF | REG | LM78L05 |
| R12 | 16k9 | C12 | 1uF | IC | |
| R13 | 130k | C13 | 1uF | IC1 | AD797 |
| R14 | 14k7 | C14 | 100n | Switch | |
| R15 | 56k | C15 | 100n | SUS | SPST |
| R16 | 14k7 | C16 | 22uF | Pots | |
| R17 | 1M | C17 | 100uF | VOL | 50kB |
| R18 | 47k | C18 | 100n | COMP | 500kA |
| R19 | 10k | C19 | 22uF | TONE | 20kA |
| R20 | 200k | C20 | 22uF | | |
| R21 | 110R | | | | |
| R22 | 10k | | | | |
| R23 | 200k | | | | |
| R24 | 110R | | | | |
| R25 | 47k | | | | |
| R26 | 285R | | | | |
| R27 | 22k | | | | |
| R28 | 4k7 | | | | |
| R29 | 27k | | | | |
| R30 | 27k | | | | |

| Shopping List | | | |
|---------------|-----|-------------------|----------|
| Value | QTY | Type | Rating |
| 110R | 2 | Metal/Carbon Film | 1/4W |
| 285R | 1 | Metal/Carbon Film | 1/4W |
| 470R | 1 | Metal/Carbon Film | 1/4W |
| 1k | 1 | Metal/Carbon Film | 1/4W |
| 2k4 | 1 | Metal/Carbon Film | 1/4W |
| 4k7 | 1 | Metal/Carbon Film | 1/4W |
| 5k6 | 3 | Metal/Carbon Film | 1/4W |
| 10k | 3 | Metal/Carbon Film | 1/4W |
| 14k7 | 3 | Metal/Carbon Film | 1/4W |
| 16k9 | 1 | Metal/Carbon Film | 1/4W |
| 22k | 1 | Metal/Carbon Film | 1/4W |
| 27k | 2 | Metal/Carbon Film | 1/4W |
| 47k | 2 | Metal/Carbon Film | 1/4W |
| 56k | 1 | Metal/Carbon Film | 1/4W |
| 130k | 1 | Metal/Carbon Film | 1/4W |
| 200k | 2 | Metal/Carbon Film | 1/4W |
| 1M | 3 | Metal/Carbon Film | 1/4W |
| 2M | 1 | Metal/Carbon Film | 1/4W |
| 47pF | 1 | Ceramic | 16v min. |
| 100n | 4 | Film | 16v min. |
| 47n | 2 | Film | 16v min. |
| 220n | 2 | Film | 16v min. |
| 1uF | 4 | Electrolytic | 16v min. |
| 22uF | 6 | Electrolytic | 16v min. |
| 100uF | 1 | Electrolytic | 16v min. |
| 1n914 | 2 | | |
| LED | 1 | Red, 5mm Diffused | |
| 1N5817 | 1 | | |
| 2SK170 | 1 | | |
| BC560C | 1 | | |
| BC550C | 3 | | |
| Photocell | 1 | *see notes | |
| LM78L05 | 1 | | |
| AD797 | 1 | | |
| SPST | 1 | Solder Lug | |
| 50kB | 1 | Solder Lug | 16mm |
| 500kA | 1 | Solder Lug | 16mm |
| 20kA | 1 | Solder Lug | 16mm |

** Not sure what photocell is used but recommend trying the 8002 or something similar (dark resistance 1M and under).

1590B Drill Guide

4.43"W x 6.46"H

