

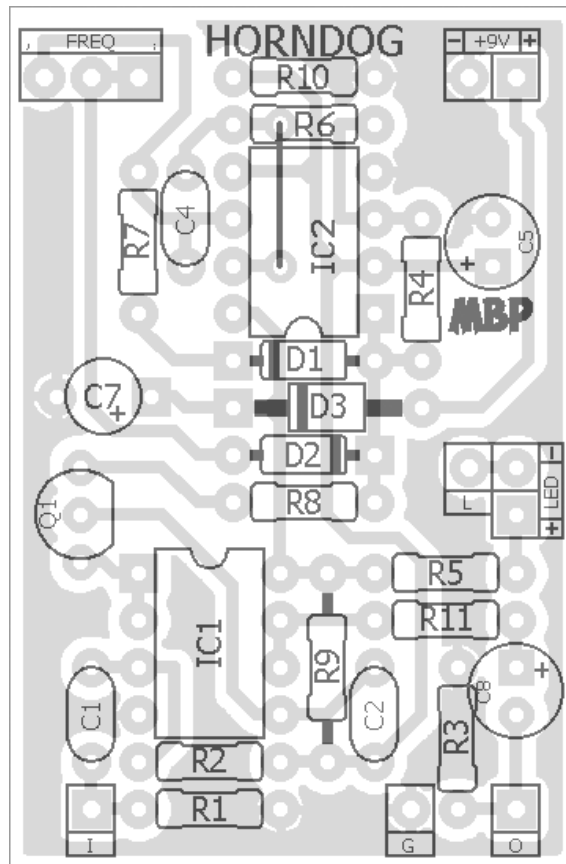
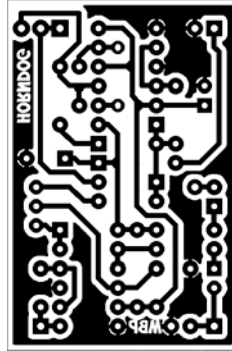
# HORNDOG

FX TYPE: Filter

Based on the Experimentalist Anonymous Bit Crusher

© 2016 madbeanpedals

1.2" W x 1.8" H



- Note the jumper -

*Etcher's Paradise projects are intended for DIY use only! Commercial pedal manufacturing using these materials is strictly forbidden.*

B.O.M.					
Resistors		Caps		Diodes	
R1	1M	C1	100n	D1, D2	1n914
R2	1M	C2	1n	D3	1N5817
R3	100k	C4	3n3	Transistors	
R4	120k	C5	10uF	Q1	J201
R5	4k7	C7	47uF	IC's	
R6	100k	C8	1uF	IC1	TL072
R7	100R			IC2	TL072
R8	1M			Pot	
R9	100k			FREQ	2MB
R10	100k				
R11	470R				

Shopping List				
Value	QTY	Type	Rating	
100R	1	Metal/Carbon Film	1/4W	
470R	1	Metal/Carbon Film	1/4W	
4k7	1	Metal/Carbon Film	1/4W	
100k	4	Metal/Carbon Film	1/4W	
120k	1	Metal/Carbon Film	1/4W	
1M	3	Metal/Carbon Film	1/4W	
1n	1	Film	16v min.	
3n3	1	Film	16v min.	
100n	1	Film	16v min.	
1uF	1	Electrolytic	16v min.	
10uF	1	Electrolytic	16v min.	
47uF	1	Electrolytic	16v min.	
1n914	2			
1N5817	1			
J201	1			
TL072	2			
2MB	1	Solder Lug / Pin	9mm or 16mm	

### Notes

- 1MB also works for the Freq pot, but 2MB will give more range.
- Use low-profile Electrolytic caps for 1590A builds.

**Update – TL072 will not work for IC2. Use an NE5532 instead (thanks to Stomptown for figuring this out).**

## 1590A Drill Guide

3.62"W x 5.74"H

