

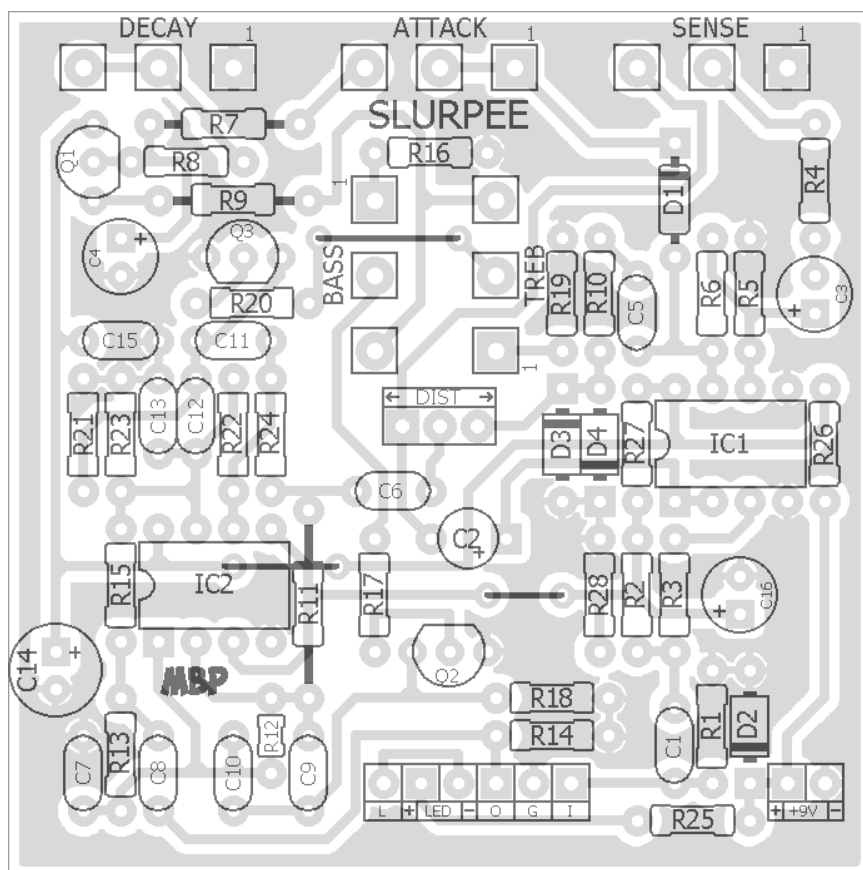
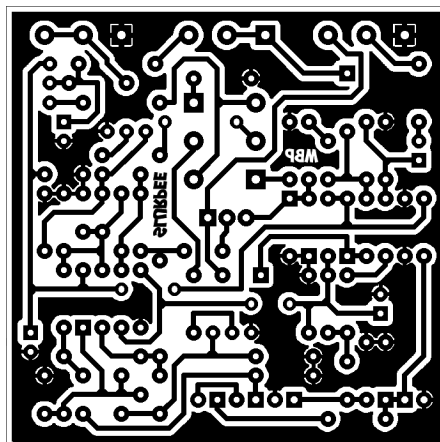
SLURPEE

FX TYPE: Filter

Based on the EHX® Bassballs™

© 2016 madbeanpedals

2.3" W x 2.3" H



- Note the jumpers -

Etcher's Paradise projects are intended for DIY use only! Commercial pedal manufacturing using these materials is strictly forbidden.

B.O.M.					
Resistors		Caps		Diodes	
R1	2M2	C1	47n	D1	1n914
R2	220k	C2	10uF	D2	1N5817
R3	2k7	C3	470n	D3, D4	1N4001
R4	4k7	C4	4u7	Transistors	
R5	2M2	C5	220n	Q1 - Q3	2N5088
R6	220k	C6	47n	IC's	
R7	100R	C7	560pF	IC1	LM1458
R8	47k	C8	220n	IC2	4558
R9	3k3	C9	22n	Switch	
R10	100k	C10	22n	DIST	SPDT
R11	470k	C11	4n7	Pots	
R12	470k	C12	4n7	ATTACK	1kB
R13	2k7	C13	560pF	BASS	5kB
R14	220k	C14	100uF	TREB	5kB
R15	2k7	C15	100n	SENSE	10kB
R16	4k7	C16	10uF	DECAY	1MB
R17	22k				
R18	47k				
R19	4k7				
R20	22k				
R21	47k				
R22	470k				
R23	27k				
R24	470k				
R25	4k7				
R26	47R				
R27	47k				
R28	47k				

Mods:

Attack: An additional (fine tuning) control for the envelope attack.

Decay: Length of envelope note decay.

Bass/Treble: Allows you to tweak the bass and treble filters independent from one another. These are internal trimmers on the stock unit.

Shopping List			
Value	QTY	Type	Rating
47R	1	Metal/Carbon Film	1/4W
100R	1	Metal/Carbon Film	1/4W
2k7	3	Metal/Carbon Film	1/4W
3k3	1	Metal/Carbon Film	1/4W
4k7	4	Metal/Carbon Film	1/4W
22k	2	Metal/Carbon Film	1/4W
27k	1	Metal/Carbon Film	1/4W
47k	5	Metal/Carbon Film	1/4W
100k	1	Metal/Carbon Film	1/4W
220k	3	Metal/Carbon Film	1/4W
470k	4	Metal/Carbon Film	1/4W
2M2	2	Metal/Carbon Film	1/4W
560pF	2	Ceramic	16v min.
4n7	2	Film	16v min.
22n	2	Film	16v min.
47n	2	Film	16v min.
100n	1	Film	16v min.
220n	2	Film	16v min.
470n	1	Tantalum	16v min.
4u7	1	Electrolytic	16v min.
10uF	2	Electrolytic	16v min.
100uF	1	Electrolytic	16v min.
1n914	1		
1N5817	1		
1N4001	2		
2N5088	3		
LM1458	1		
4558	1		
SPDT	1	Solder Lug	
1kB	1	PCB Right Angle	16mm
5kB	2	PCB Right Angle	16mm
10kB	1	PCB Right Angle	16mm
1MB	1	PCB Right Angle	16mm

125B Drill Guide

5.52"W x 7.65"H

