

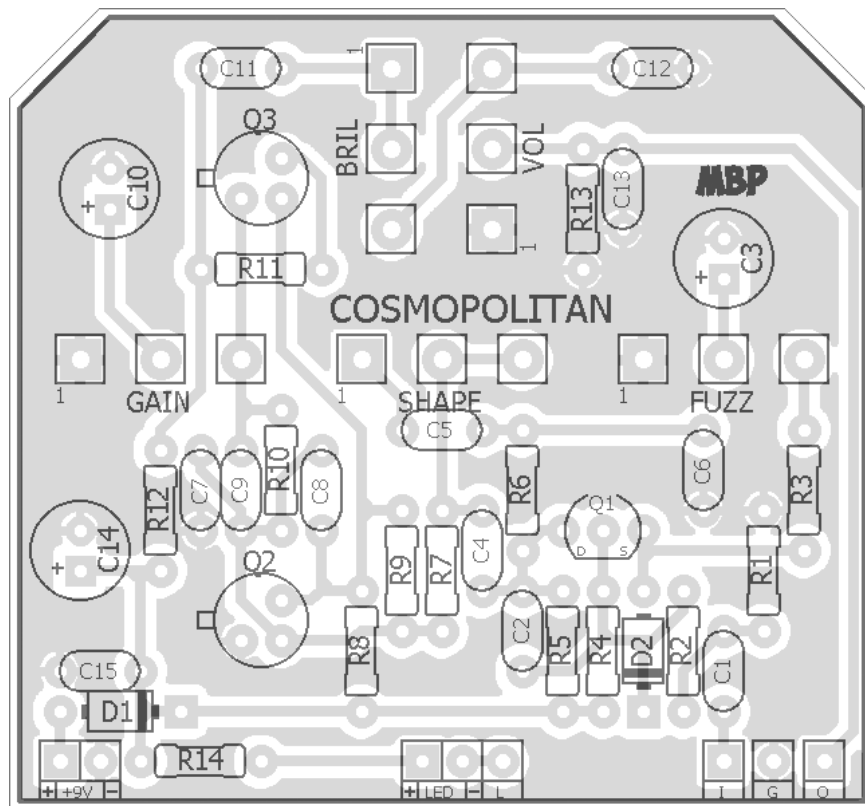
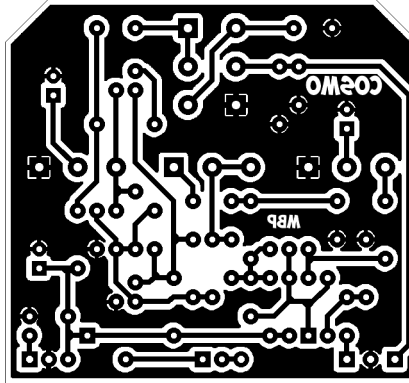
# COSMOPOLITAN

FX TYPE: Fuzz

Based on the Skreddy® Screwdriver™

© 2016 madbeanpedals

2.15" W x 2.0" H



*Etcher's Paradise projects are intended for DIY use only! Commercial pedal manufacturing using these materials is strictly forbidden.*

B.O.M.					
Resistors		Caps		Diodes	
R1	1M	C1	47n	D1	1N5817
R2	100R	C2	200pF	D2	9.1v Zener
R3	680R	C3	100uF	Transistors	
R4	1M	C4	15n	Q1	BS170
R5	2k7	C5	220n	Q2	BC109
R6	820R	C6	4n7	Q3	AC127
R7	100R	C7	470pF	Pots	
R8	100k	C8	1n	GAIN	1kB
R9	33k	C9	1n	FUZZ	2kB
R10	100k	C10	100uF	SHAPE	100kA
R11	2k7	C11	100n	VOL	100kA
R12	8k2	C12	3n3	BRIL	100kB
R13	33k	C13	4n7		
R14	4k7	C14	100uF		
		C15	100n		

Shopping List			
Value	QTY	Type	Rating
100R	2	Metal / Carbon Film	1/4W
680R	1	Metal / Carbon Film	1/4W
820R	1	Metal / Carbon Film	1/4W
2k7	2	Metal / Carbon Film	1/4W
4k7	1	Metal / Carbon Film	1/4W
8k2	1	Metal / Carbon Film	1/4W
33k	2	Metal / Carbon Film	1/4W
100k	2	Metal / Carbon Film	1/4W
1M	2	Metal / Carbon Film	1/4W
200pF	1	Ceramic	16v min.
470pF	1	Ceramic	16v min.
1n	2	Film	16v min.
3n3	1	Film	16v min.
4n7	2	Film	16v min.
15n	1	Film	16v min.
47n	1	Film	16v min.
100n	2	Film	16v min.
220n	1	Film	16v min.
100uF	3	Electrolytic	16v min.
1N5817	1		
9.1v Zener	1		
BS170	1		
BC109	1		
AC127	1		
1kB	1	PCB Right Angle	16mm
2kB	1	PCB Right Angle	16mm
100kA	2	PCB Right Angle	16mm
100kB	1	PCB Right Angle	16mm

## 1590B Drill Guide

4.43"W x 6.47"H

