

DRAGONTHLAYUR

FX TYPE: Fuzz/Octave

based on the EHX® Lizard Queen™

Enclosure Size: 1590B

Etcher's Paradise project

© 2023 [madbeanpedals](#)



Overview

History:

<https://www.youtube.com/watch?v=kn7j2QPRHz4>

<https://www.youtube.com/watch?v=bu2xGg49RCw&t=998s>

<https://www.freestompboxes.org/viewtopic.php?t=32194>

Demo:

<https://www.youtube.com/watch?v=JddoyrpcOzg>

Controls

LEVEL: Output level.

BAL: Full fuzz, CCW, light fuzz, CW.

OCT: Turn CW to add upper octave.

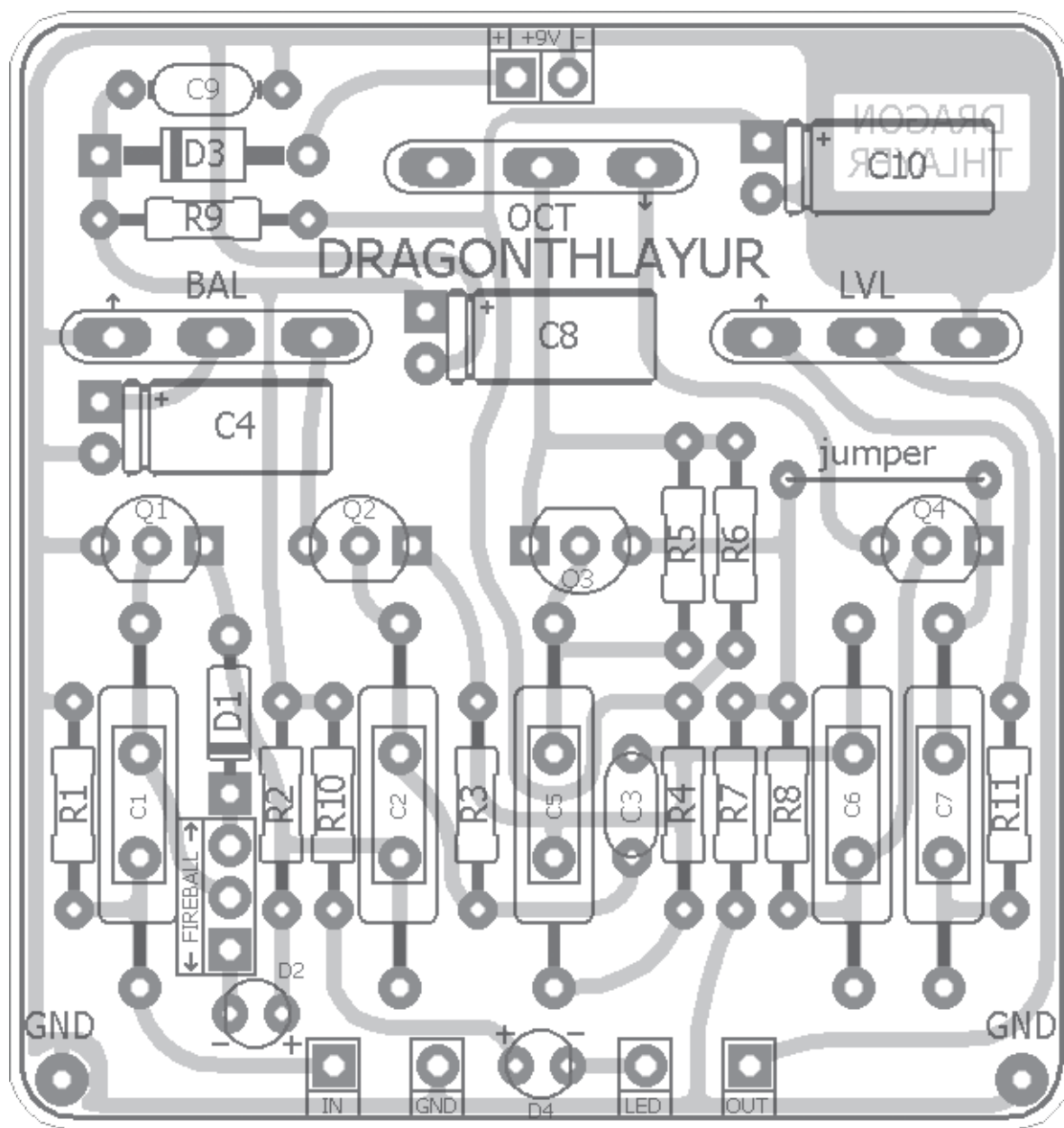
FIREBALL: This switches b/w silicon and LED biasing diode for Q1.

Notes

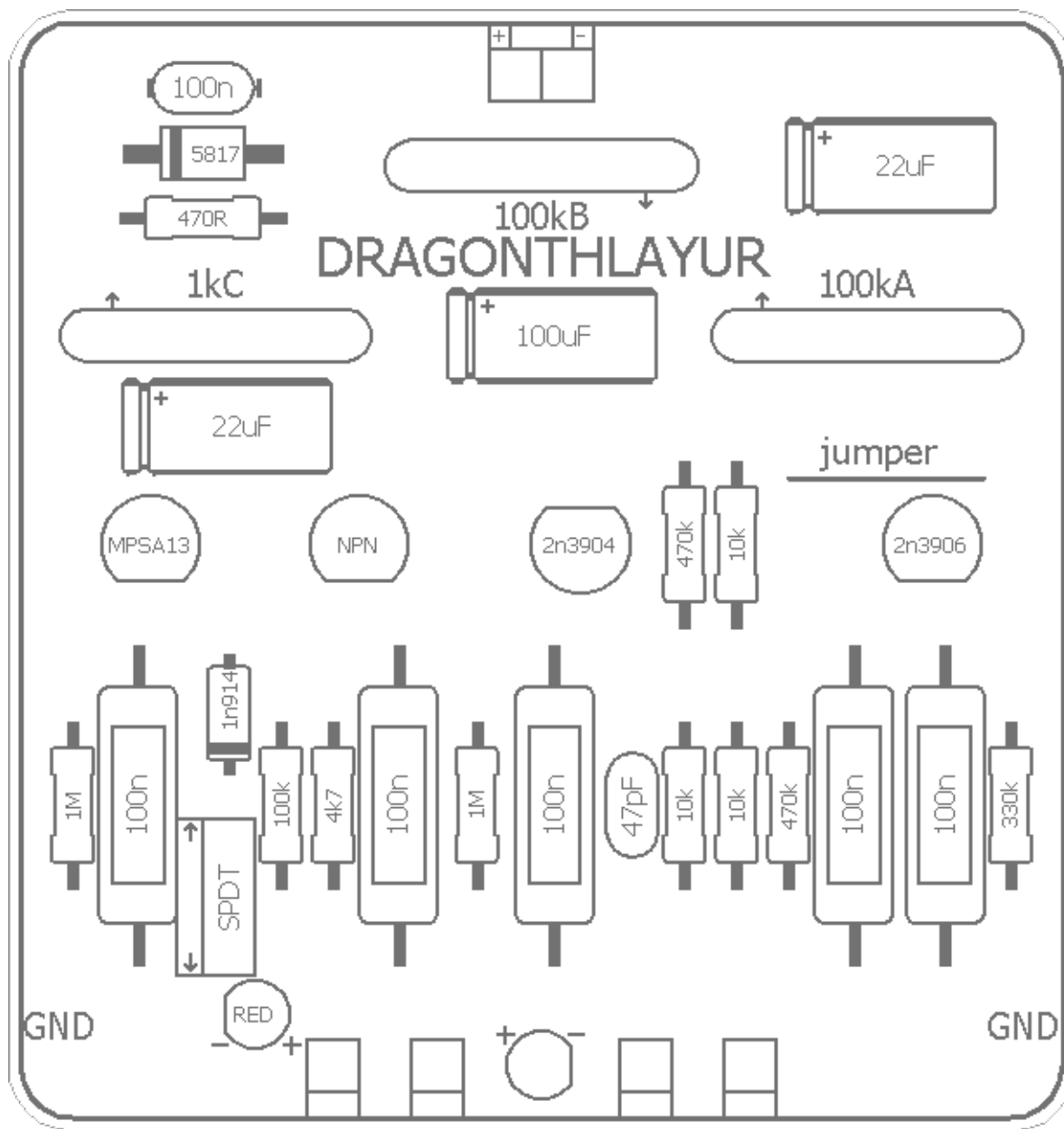
1. Transistor types unknown. Suggest MPSA13 or other Darlington for Q1. 2n3904 for Q2 sounds pretty squishy but other NPN can be used. Suggest 2n3904/06 for differential pair (Q3, Q4).
2. Electrolytic values unknown so I made a guess.
3. C3 value unknown. Most likely 22pF or 47pF.
4. Added switching for different biasing diodes. Added optional volume reduction resistor at the output.
5. You can use axial or radial caps for the 100n (qty. 5).

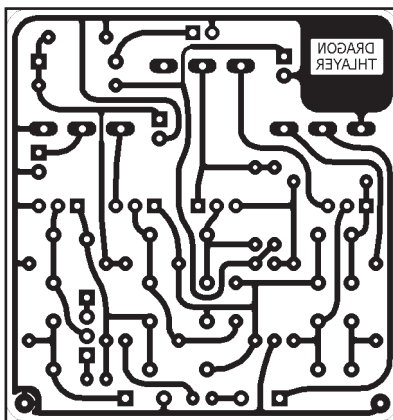
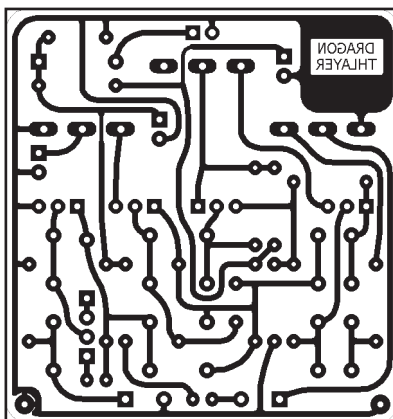
Terms of Use: Etcher's Paradise projects are intended for DIY use only. Commercial pedal manufacturing using these materials is strictly forbidden.

Technical assistance for your build(s) is available via the [madbeanpedals forum](#). Please go there rather than emailing me for assistance on builds. This is because (1) I'm not always available to respond via email in a timely and continuous manner, and (2) posting technical problems and solutions in the forum creates a record from which other members may benefit.



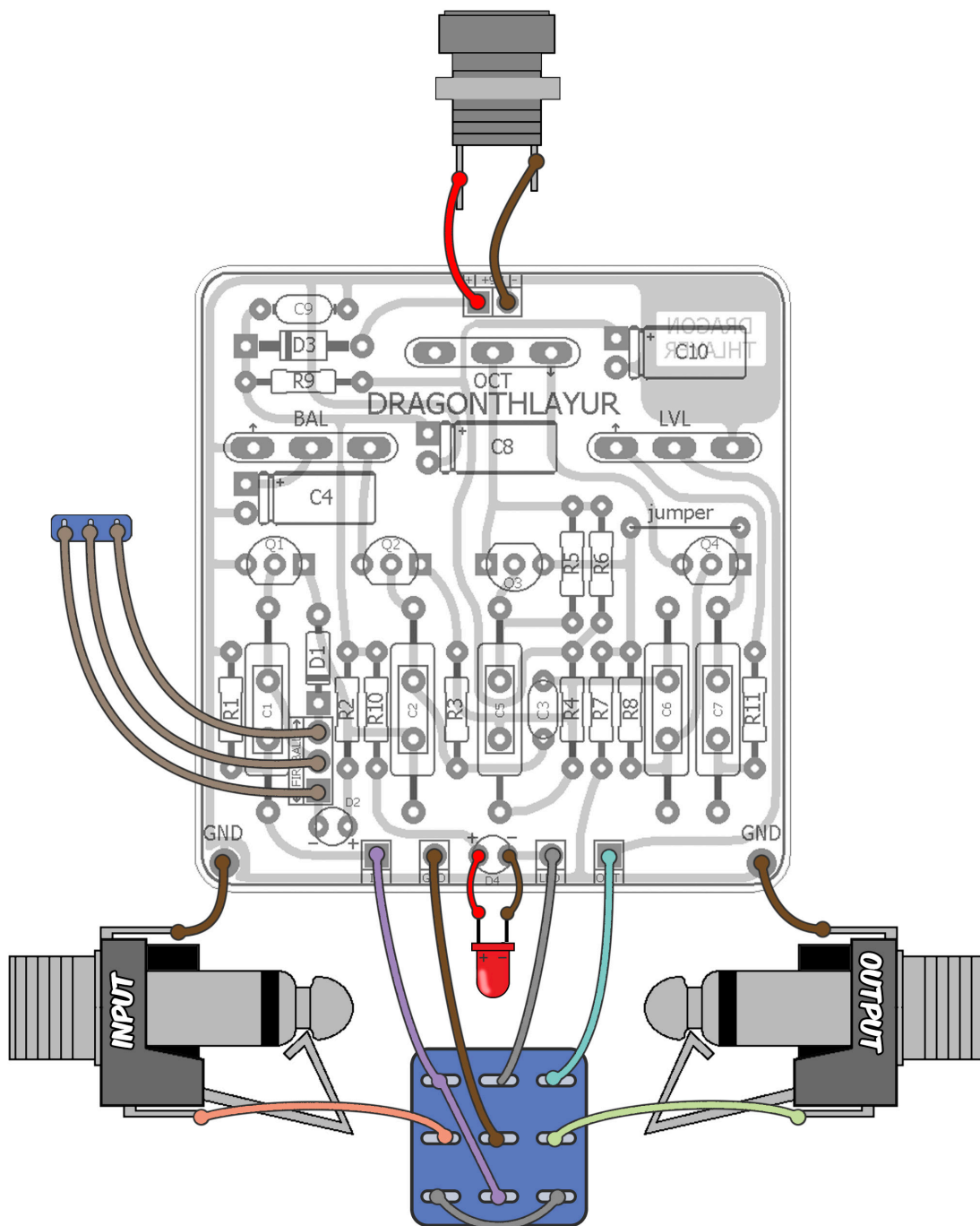
Note the jumper wire.





Resistors		Caps		Diodes	
R1	1M	C1	100n	D1	1n914
R2	100k	C2	100n	D2	LED
R3	1M	C3	47pF	D3	5817
R4	10k	C4	22uF	D4	LED
R5	470k	C5	100n	Transistors	
R6	10k	C6	100n	Q1	MPSA13
R7	10k	C7	100n	Q2	NPN
R8	470k	C8	100uF	Q3	2n3904
R9	470R	C9	100n	Q4	2n3906
R10	4k7	C10	22uF	Switch	
R11	330k			FIREBALL	SPDT
				Pots	
				BAL	1kC
				LVL	100kA
				OCT	100kB

Suggest:
 16mm wired pots
 On/On mini SPDT toggle



Note: Drill Guides are approximate and may require tweaking depending on the types of jacks, switches and pots you use.

