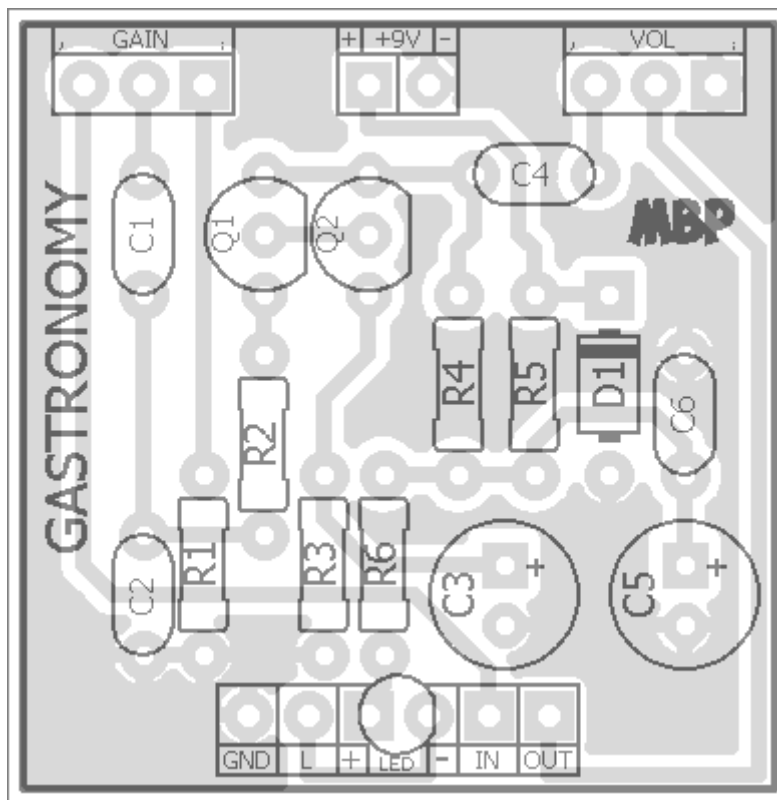


# GASTRONOMY

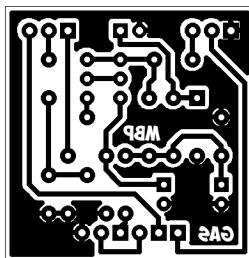
FX TYPE: Fuzz

Based on the EQD ® Bellows™

© 2017 madbeanpedals



1.3" W x 1.33" H



*Etcher's Paradise projects are intended for DIY use only! Commercial pedal manufacturing using these materials is strictly forbidden*

B.O.M.					
Resistors		Caos		Diodes	
R1	10k	C1	22n	D1	1N4001
R2	10k	C2	1n	Transistors	
R3	200R	C3	100uF	Q1	PF5102
R4	22k	C4	68n	Q2	MPSA13
R5	100R	C5	100uF	Pots	
R6	4k7	C6	100n	VOL	100kA
				GAIN	250kA

Shopping List				
Value	QTY	Type	Rating	
100R	1	Metal / Carbon Film	1/4W	
200R	1	Metal / Carbon Film	1/4W	
4k7	1	Metal / Carbon Film	1/4W	
10k	2	Metal / Carbon Film	1/4W	
22k	1	Metal / Carbon Film	1/4W	
1n	1	Film	16v min.	
22n	1	Film	16v min.	
68n	1	Film	16v min.	
100n	1	Film	16v min.	
100uF	2	Electrolytic	16v min.	
1N4001	1			
PF5102	1	or, J201		
MPSA13	1			
100kA	1	Solder Lug	9 or 12mm	
250kA	1	Solder Lug	10 or 12mm	

Use low profile 100uF caps.

## 1590A Drill Guide

3.64" W x 5.75" H

