

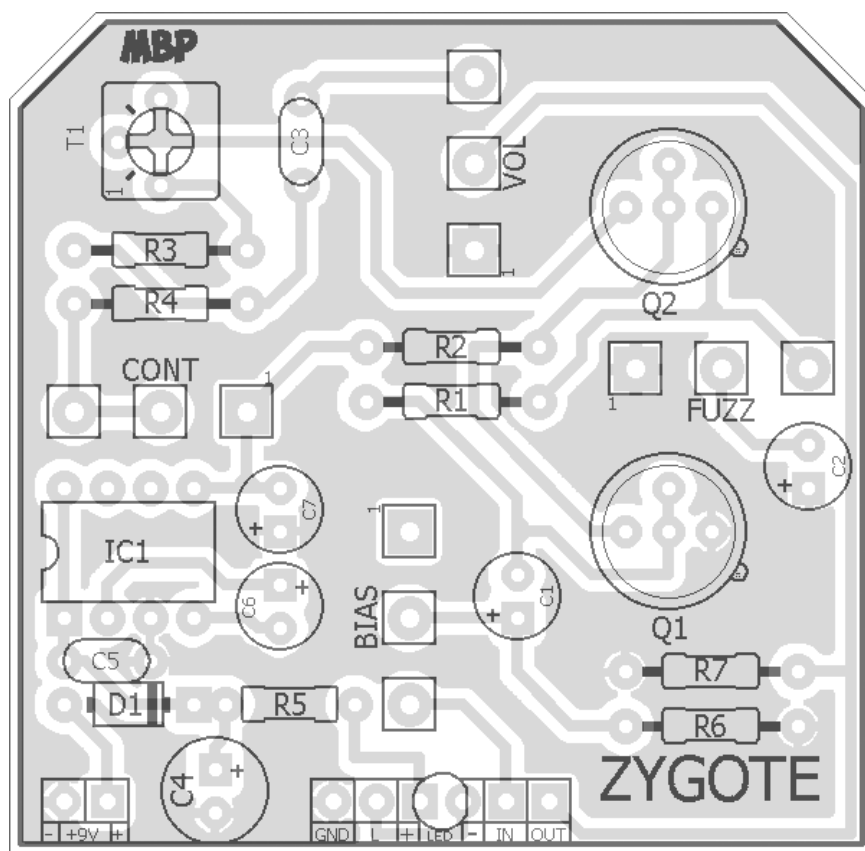
# ZYGOTE

FX TYPE: Fuzz

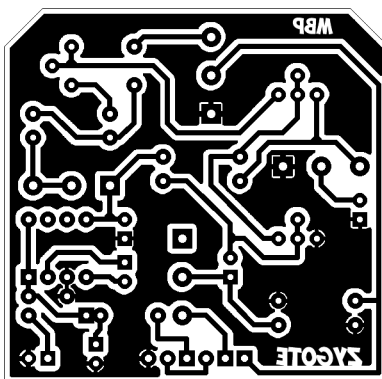
Based on the Fulltone® '69™

© 2016 madbeanpedals

REVISED 05.17



2.0" W x 1.95" H



**Notes:** Voltage inverter added for use with regular 9v center-pin negative power supply. Any “typical” Fuzz Face pair of transistors should work well.

*Rev1. Fixed reversed Fuzz pot. Added 1M pulldown resistors on input and output.*

*Etcher's Paradise projects are intended for DIY use only! Commercial pedal manufacturing using these materials is strictly forbidden*

B.O.M.					
Resistors		Caps		Didoes	
R1	100k	C1	2u2	D1	1N5817
R2	33k	C2	22uF	Transistors	
R3	1k	C3	100n	Q1, Q2	GE PNP
R4	220R	C4	100uF	IC	
R5	4k7	C5	100n	IC1	MAX1044CPA
R6	1M	C6	10uF	Trimmer	
R7	1M	C7	10uF	T1	20k
				Pots	
				VOL	500kA
				FUZZ	1kC
				CONT	1kB
				BIAS	50kB

Shopping List			
Value	QTY	Type	Rating
220R	1	Carbon Film / Carbon Comp	1/4W
1k	1	Carbon Film / Carbon Comp	1/4W
4k7	1	Carbon Film / Carbon Comp	1/4W
33k	1	Carbon Film / Carbon Comp	1/4W
100k	1	Carbon Film / Carbon Comp	1/4W
1M	2	Carbon Film / Carbon Comp	1/4W
100n	2	Film	16v min.
2u2	1	Electrolytic	16v min.
10uF	2	Electrolytic	16v min.
22uF	1	Electrolytic	16v min.
100uF	1	Electrolytic	16v min.
1N5817	1		
GE PNP	2	Germanium PNP	
MAX1044CPA	1	or, TC1044SCPA	
20k	1	Bourns 3362P	
1kB	1	PCB Right Angle	16mm
1kC	1	PCB Right Angle	16mm
50kB	1	PCB Right Angle	16mm
500kA	1	PCB Right Angle	16mm

## 1590B Drill Guide

4.43"W x 6.47"H

