

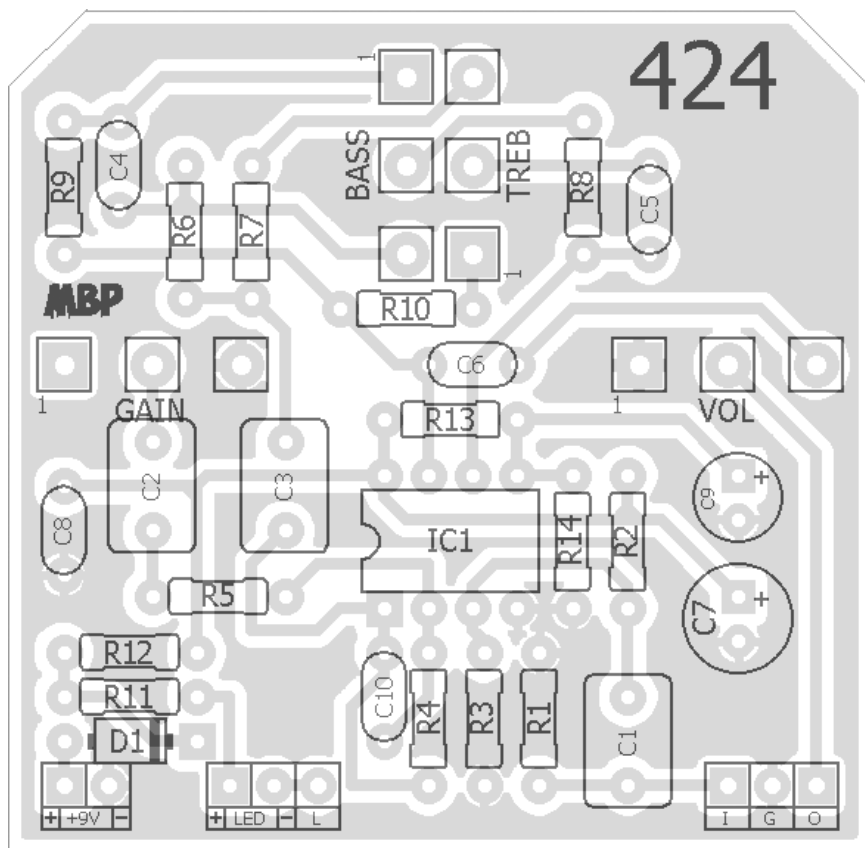
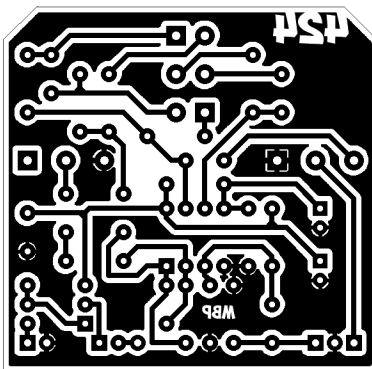
424

FX TYPE: Overdrive

Based on the Mid-Fi Electronics® Demo Tape Fuzz™

© 2016 madbeanpedals

1.95" W x 1.9" H



Etcher's Paradise projects are intended for DIY use only! Commercial pedal manufacturing using these materials is strictly forbidden.

| B.O.M. | | | | | |
|-----------|------|------|-------|--------|--------|
| Resistors | | Caps | | Diodes | |
| R1 | 1M | C1 | 1uF | D1 | 1N5817 |
| R2 | 100k | C2 | 1uF | IC | |
| R3 | 100k | C3 | 1uF | IC1 | 4558 |
| R4 | 470k | C4 | 47n | Pots | |
| R5 | 470R | C5 | 4n7 | GAIN | 25kB |
| R6 | 10k | C6 | 47n | VOL | 100kB |
| R7 | 3k6 | C7 | 100uF | BASS | 100kB |
| R8 | 10k | C8 | 100n | TREB | 500kB |
| R9 | 10k | C9 | 10uF | | |
| R10 | 3k6 | C10 | 10pF | | |
| R11 | 4k7 | | | | |
| R12 | 100R | | | | |
| R13 | 10k | | | | |
| R14 | 10k | | | | |

| Shopping List | | | | |
|---------------|-----|-------------------|----------|--|
| Value | QTY | Type | Rating | |
| 100R | 1 | Metal/Carbon Film | 1/4W | |
| 470R | 1 | Metal/Carbon Film | 1/4W | |
| 3k6 | 2 | Metal/Carbon Film | 1/4W | |
| 4k7 | 1 | Metal/Carbon Film | 1/4W | |
| 10k | 5 | Metal/Carbon Film | 1/4W | |
| 100k | 2 | Metal/Carbon Film | 1/4W | |
| 470k | 1 | Metal/Carbon Film | 1/4W | |
| 1M | 1 | Metal/Carbon Film | 1/4W | |
| 10pF | 1 | Ceramic | 16v min. | |
| 4n7 | 1 | Film | 16v min. | |
| 47n | 2 | Film | 16v min. | |
| 100n | 1 | Film | 16v min. | |
| 1uF | 3 | Film | 16v min. | |
| 10uF | 1 | Electrolytic | 16v min. | |
| 100uF | 1 | Electrolytic | 16v min. | |
| 1N5817 | 1 | | | |
| 4558 | 1 | | | |
| 25kB | 1 | PCB Right Angle | 16mm | |
| 100kB | 2 | PCB Right Angle | 16mm | |
| 500kB | 1 | PCB Right Angle | 16mm | |

1590B Drill Guide

4.43"W x 6.47"H

