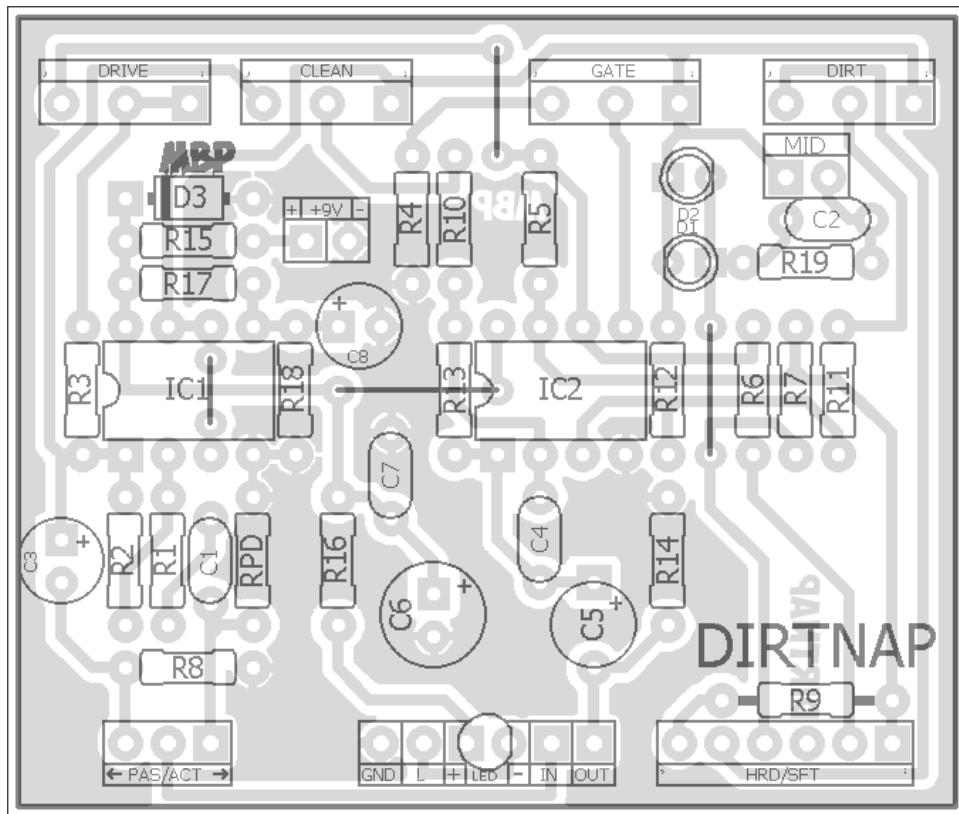


DIRTNAP

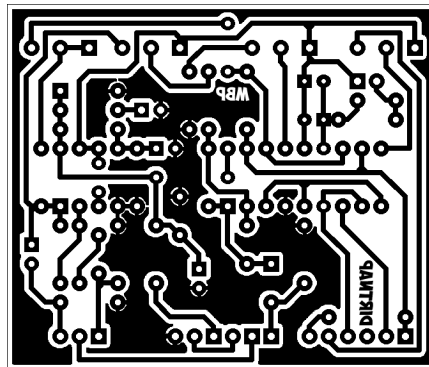
FX TYPE: Bass Overdrive

Based on the Chunk Systems ® Brown Dog™

© 2017 madbeanpedals



2.25" W x 1.9" H



Etcher's Paradise projects are intended for DIY use only! Commercial pedal manufacturing using these materials is strictly forbidden

B.O.M.					
Resistors		Caps		Didoes	
R1	220k	C1	100n	D1, D2	LED
R2	1M	C2	33n	D3	1N4001
R3	1k	C3	4u7	IC	
R4	1M	C4	10pF	IC1	Dual Op-Amp
R5	10M	C5	4u7	IC2	Dual Op-Amp
R6	2M2	C6	100uF	Switches	
R7	1k	C7	100n	HRD/SFT	DPDT
R8	10k	C8	4u7	PAS/ACT	SPDT
R9	470k			MID	SPDT
R10	2M2			Pots	
R11	2M2			CLEAN	100kA
R12	2M2			DIRT	100kA
R13	2M2			DRIVE	100kA
R14	10k			GATE	100kA
R15	100R				
R16	4k7				
R17	1M				
R18	1M				
R19	6k8				
RPD	1M				

Shopping List			
Value	Qty	Type	Rating
100R	1	Metal Film	1/4W
1k	2	Metal Film	1/4W
4k7	1	Metal Film	1/4W
6k8	1	Metal Film	1/4W
10k	2	Metal Film	1/4W
220k	1	Metal Film	1/4W
470k	1	Metal Film	1/4W
1M	5	Metal Film	1/4W
2M2	5	Metal Film	1/4W
10M	1	Metal Film	1/4W
10pF	1	Ceramic / MLCC	16v min.
33n	1	Film	16v min.
100n	2	Film	16v min.
4u7	3	Electrolytic	16v min.
100uF	1	Electrolytic	16v min.
LED	2	Diffused	3 or 5mm
1N4001	1		
IC	2	Dual Op-Amp	
DPDT	1	On/On	
SPDT	2	On/On	
100kA	4	Solder Lug	16mm

Mods:

- Added pull-down resistor on “passive” side of the input
- Changed from single TL074 to two Dual Op-Amps
- Added “Mid” switch for tone cut/focus on the distortion path
- Added C4
- Made passive/active mode a switch (for passive or active bass pickups)

125B Drill Guide

5.52" W x 7.65" H

