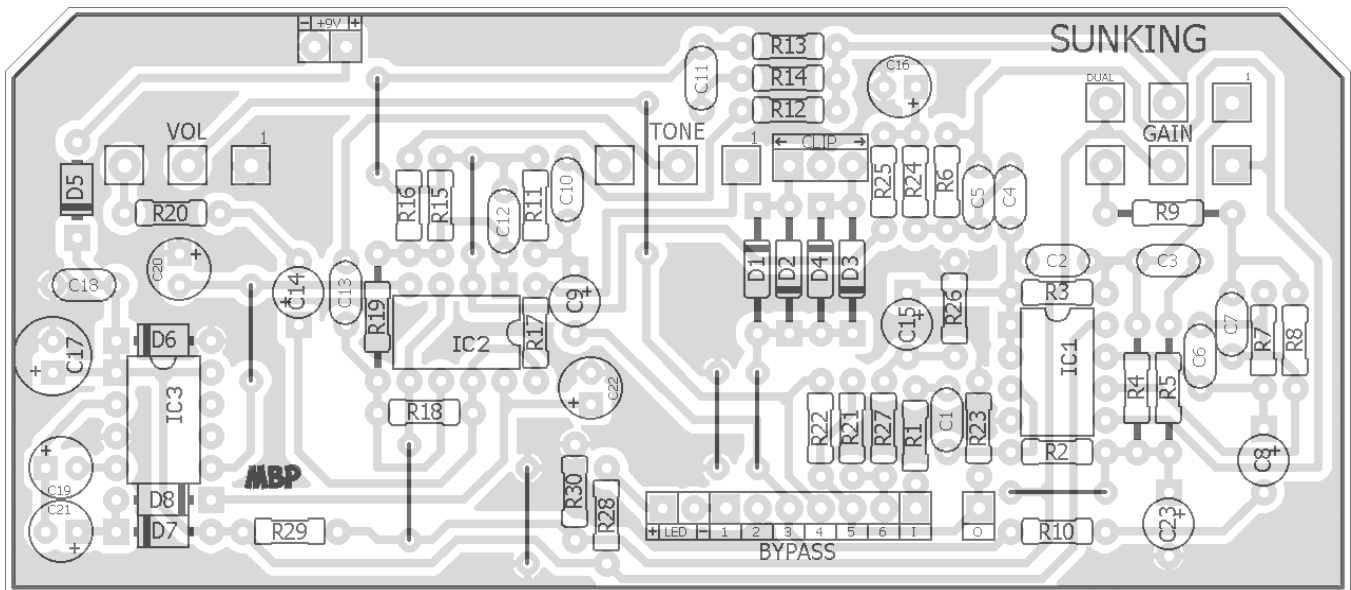
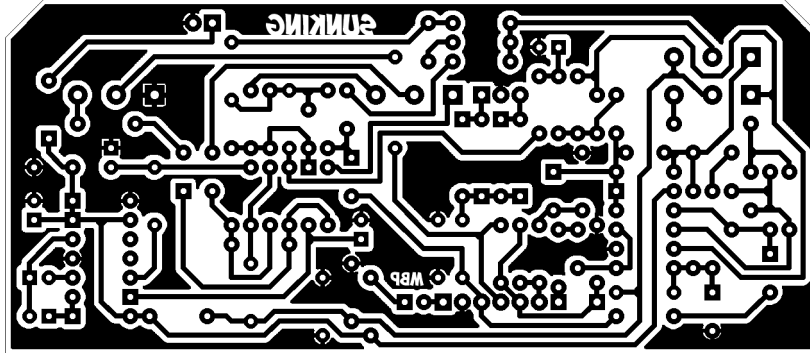


SUNKING

FX TYPE: Overdrive
Based on the Klon Siberia™
© 2016 madbeanpedals

4.26" W x 1.85" H



- note the jumpers -

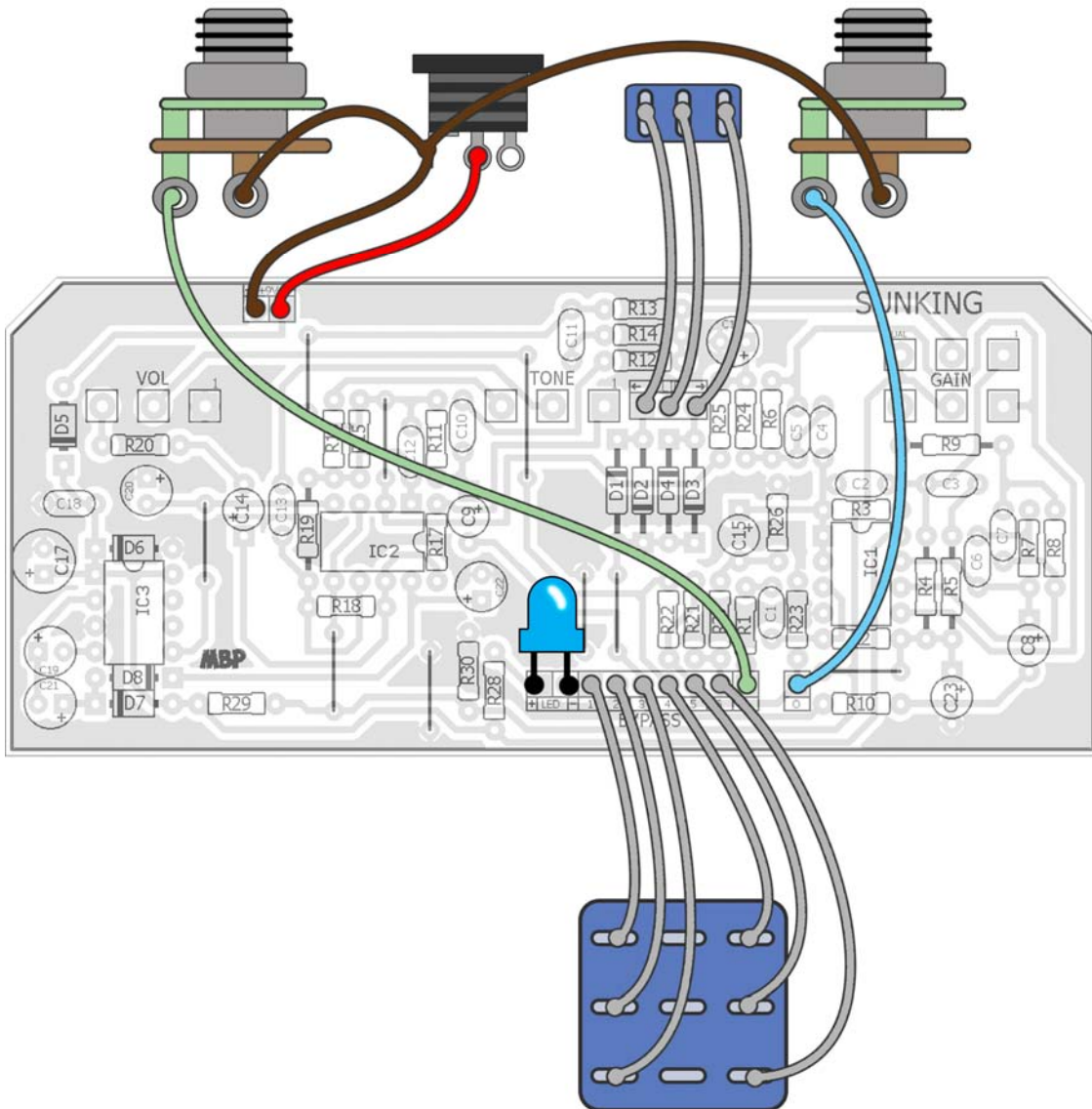
- Added D6 and Clip switch
- For a darker tone range try 5n6 for C13 or flip R16 and R17 values (a la the Silver Pony)

Etcher's Paradise projects are intended for DIY use only! Commercial pedal manufacturing using these materials is strictly forbidden.

B.O.M.					
Resistors		Caps		Diodes	
R1	10k	C1	100n	D1	GE
R2	1M	C2	68n	D2	GE
R3	5k1	C3	390n	D3	your choice
R4	1k5	C4	100n	D4	your choice
R5	1k	C5	68n	D5	1N5817
R6	10k	C6	390pF	D6	11V Zener
R7	422k	C7	82n	D7	1N4001
R8	15k	C8	1uF	D8	1N4001
R9	2k	C9	1uF	IC	
R10	1k	C10	2n2	IC1	TL072
R11	47k	C11	27n	IC2	TL072
R12	22k	C12	820pF	IC3	ICL7660SCPA
R13	27k	C13	3n9	Switch	
R14	12k	C14	4u7	CLIP	On/On
R15	392k	C15	4u7	Pots	
R16	1k8	C16	1uF	TONE	10kB
R17	4k7	C17	100uF	VOL	10kB
R18	100k	C18	100n	GAIN	100kB
R19	100k	C19	1uF		
R20	560R	C20	1uF		
R21	68k	C21	1uF		
R22	68k	C22	1uF		
R23	100k	C23	47uF		
R24	1k5				
R25	15k				
R26	100k				
R27	560R				
R28	3k9				
R29	27k				
R30	27k				

Shopping List			
Value	QTY	Type	Rating
560R	2	Metal / Carbon Film	1/4W
1k	2	Metal / Carbon Film	1/4W
1k5	2	Metal / Carbon Film	1/4W
1k8	1	Metal / Carbon Film	1/4W
2k	1	Metal / Carbon Film	1/4W
3k9	1	Metal / Carbon Film	1/4W
4k7	1	Metal / Carbon Film	1/4W
5k1	1	Metal / Carbon Film	1/4W
10k	2	Metal / Carbon Film	1/4W
12k	1	Metal / Carbon Film	1/4W
15k	2	Metal / Carbon Film	1/4W
22k	1	Metal / Carbon Film	1/4W
27k	3	Metal / Carbon Film	1/4W
47k	1	Metal / Carbon Film	1/4W
68k	2	Metal / Carbon Film	1/4W
100k	4	Metal / Carbon Film	1/4W
392k	1	Metal / Carbon Film	1/4W
422k	1	Metal / Carbon Film	1/4W
1M	1	Metal / Carbon Film	1/4W
390pF	1	Ceramic/Film/Mica	25v min
820pF	1	Ceramic/Film/Mica	25v min
2n2	1	Film	25v min
3n9	1	Film	25v min
27n	1	Film	25v min
68n	2	Film	25v min
82n	1	Film	25v min
100n	3	Film	25v min
390n	1	Film	25v min
1uF	7	Electrolytic	25v min
4u7	2	Electrolytic	25v min
47uF	1	Electrolytic	25v min
100uF	1	Electrolytic	25v min
GE	2	1n34a, 1n270, DE9	
your choice	2	1n914, 1N4001, LED, etc	
1N5817	1		
11V Zener	1		
1N4001	2		
TL072	2		
ICL7660SCPA	1	or, MAX1044 CPA or TC1044 SCPA	
On/On	1	SPDT Solder Lug	
10kB	2	PCB Right Angle	16mm
100kB	1	Dual-Gang PCB Right Angle	16mm

Wiring Guide



1590BB Drill Guide

6.82"W x 5.8"H

