

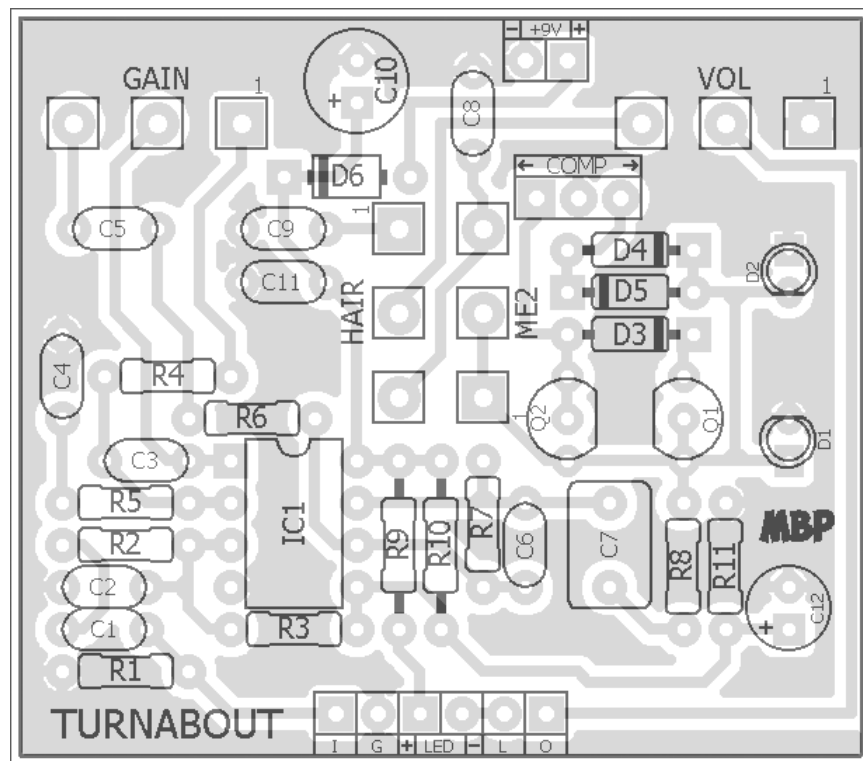
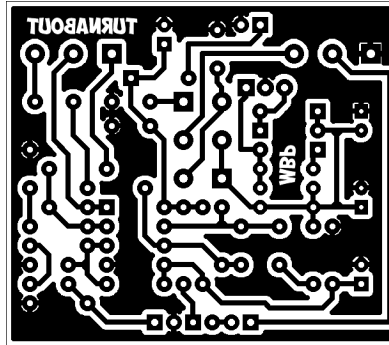
# TURNABOUT

**FX TYPE: Distortion**

Based on the JHS® Andy Timmons™

© 2016 madbeanpedals

**2.05" W x 1.8" H**



**Note** – This design is my “best guess” as to what is in the Andy Timmons pedal (aka Angry, Sad, Dopey, Silly, Pensive, Flippant, Charlie Brown CrunchBox). It might be spot-on or there may be some component value differences. I’ve built it and it sounds good (like the CrunchBox). The center position on the switch is LED clipping.

*Etcher’s Paradise projects are intended for DIY use only! Commercial pedal manufacturing using these materials is strictly forbidden.*

B.O.M.					
Resistors		Caps		Diodes	
R1	1M	C1	22n	D1, D2	Red LED
R2	1k	C2	1n	D3 - D5	BAT41
R3	1M	C3	100pF	D6	1N5817
R4	1k	C4	220n	Transistors	
R5	1k	C5	100n	Q1, Q2	2N7000
R6	10k	C6	100pF	IC's	
R7	1M	C7	1uF	IC1	LM833
R8	470R	C8	22n	Switch	
R9	4k7	C9	22n	COMP	On/Off/On
R10	22k	C10	100uF	Pots	
R11	22k	C11	100n	ME2	10kC
		C12	10uF	HAIR	25kB
				VOL	100kB
				GAIN	100kB

Shopping List				
Value	QTY	Type	Rating	
470R	1	Metal Film	1/4W	
1k	3	Metal Film	1/4W	
4k7	1	Metal Film	1/4W	
10k	1	Metal Film	1/4W	
22k	2	Metal Film	1/4W	
1M	3	Metal Film	1/4W	
100pF	2	Ceramic	16v min	
1n	1	Film	16v min	
22n	3	Film	16v min	
100n	2	Film	16v min	
220n	1	Film	16v min	
1uF	1	Film	16v min	
10uF	1	Electrolytic	16v min	
100uF	1	Electrolytic	16v min	
Red LED	2	Diffused	3 or 5mm	
BAT41	3			
1N5817	1			
2N7000	2			
LM833	1			
On/Off/On	1	SPDT, Solder Lug		
10kC	1	PCB Right Angle	16mm	
25kB	1	PCB Right Angle	16mm	
100kB	2	PCB Right Angle	16mm	

# 1590B Drill Guide

4.43"W x 6.47"H

