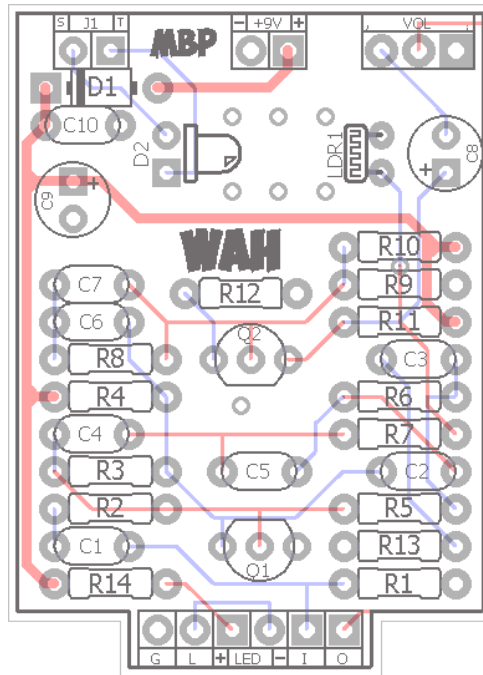
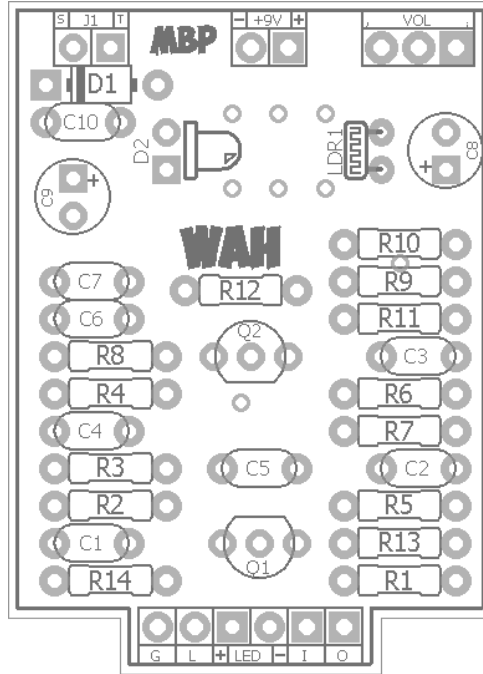


WAH

FX TYPE: Filter

© 2016 madbeanpedals

1.3" W x 1.8" H



Terms of Use: You are free to use purchased circuit boards for both DIY and small commercial operations. You may not offer these PCBs for resale or as part of a "kit" in a commercial fashion. Peer to peer re-sale is, of course, okay.

B.O.M.					
Resistors		Caps		Transistors	
R1	1M	C1	100n	Q1, Q2	2N5088
R2	330k	C2	100n	Diodes	
R3	4M7	C3	15n	D1	1N5817
R4	10k	C4	2n2	D2	3mm LED
R5	180k	C5	6n8	Photocell	
R6	180k	C6	100n	LDR1	9203
R7	47R	C7	2n2	Pot	
R8	100k	C8	4u7	VOL	100kB
R9	100k	C9	47uF		
R10	470k	C10	100n		
R11	10k				
R12	2k7				
R13	33k				
R14	4k7				

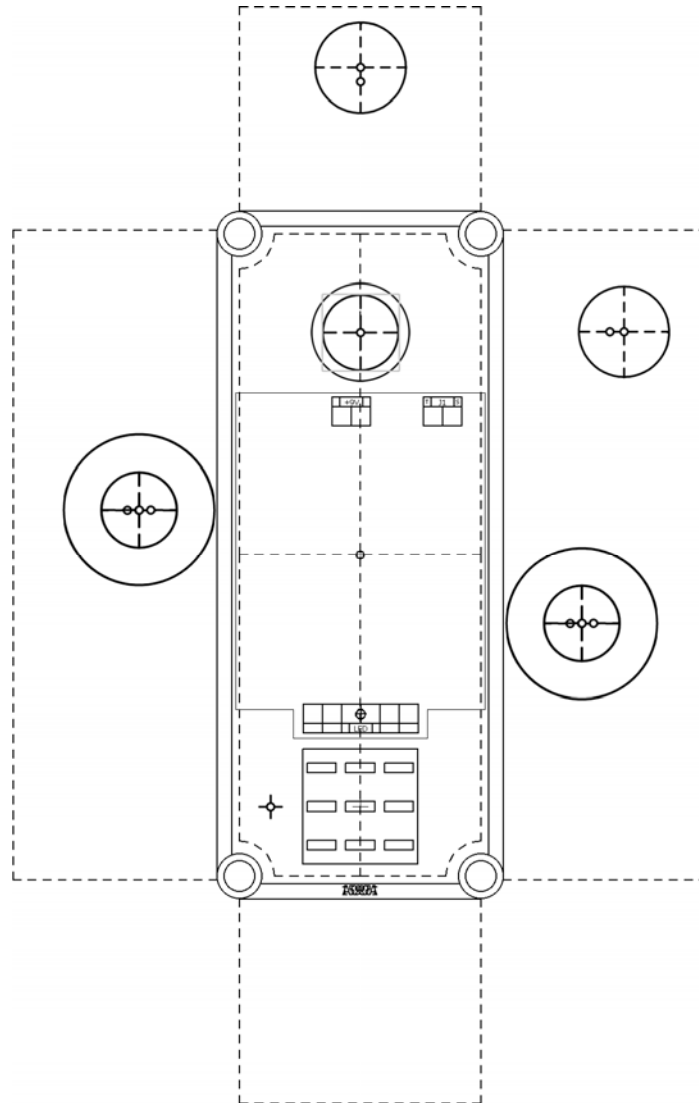
Shopping List				
Value	QTY	Type	Rating	
47R	1	Metal / Carbon Film	1/4W	
2k7	1	Metal / Carbon Film	1/4W	
4k7	1	Metal / Carbon Film	1/4W	
10k	2	Metal / Carbon Film	1/4W	
33k	1	Metal / Carbon Film	1/4W	
100k	2	Metal / Carbon Film	1/4W	
180k	2	Metal / Carbon Film	1/4W	
330k	1	Metal / Carbon Film	1/4W	
470k	1	Metal / Carbon Film	1/4W	
1M	1	Metal / Carbon Film	1/4W	
4M7	1	Metal / Carbon Film	1/4W	
2n2	2	Film	16v min.	
6n8	1	Film	16v min.	
15n	1	Film	16v min.	
100n	4	Film	16v min.	
4u7	1	Electrolytic	16v min.	
47uF	1	Electrolytic	16v min.	
2N5088	2			
1N5817	1			
LED	1	Red, Diffused	3mm	
Photocell	1	9203		
100kB	1	PCB Mount	9mm	

Note – Be sure to use low profile electrolytic caps in all 1590A builds (5 to 7mm height max)

9203 photocell: <http://smallbear-electronics.mybigcommerce.com/photocells-cds-5mm-diameter/>
 9mm Pot: <http://smallbear-electronics.mybigcommerce.com/alpha-single-gang-9mm-pc-mount/>

1590A Drill Guide

3.63"W x 5.72"H



Download the Photoshop drill template:

http://www.madbeanpedals.com/projects/Tapanatorator/Tapnanator_DRILL.zip

