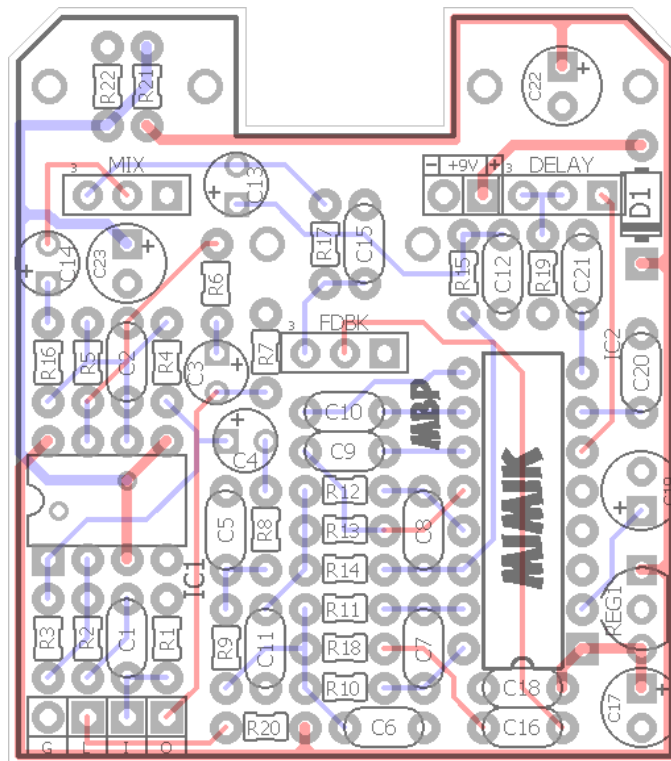
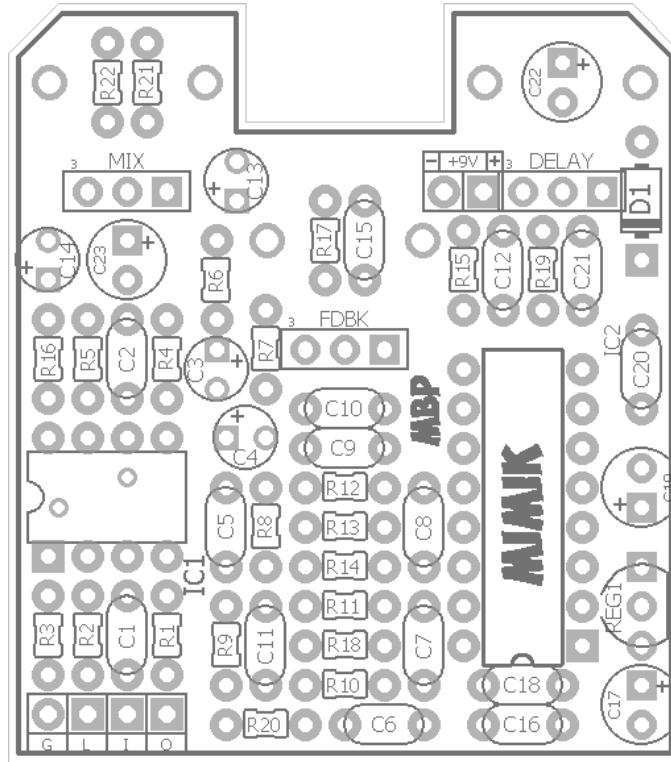


MIMIK

FX TYPE: Delay

© 2016 madbeanpedals

1.7" W x 1.925" H



Terms of Use: You are free to use purchased circuit boards for both DIY and small commercial operations. You may not offer these PCBs for resale or as part of a "kit" in a commercial fashion. Peer to peer re-sale is, of course, okay.

B.O.M.

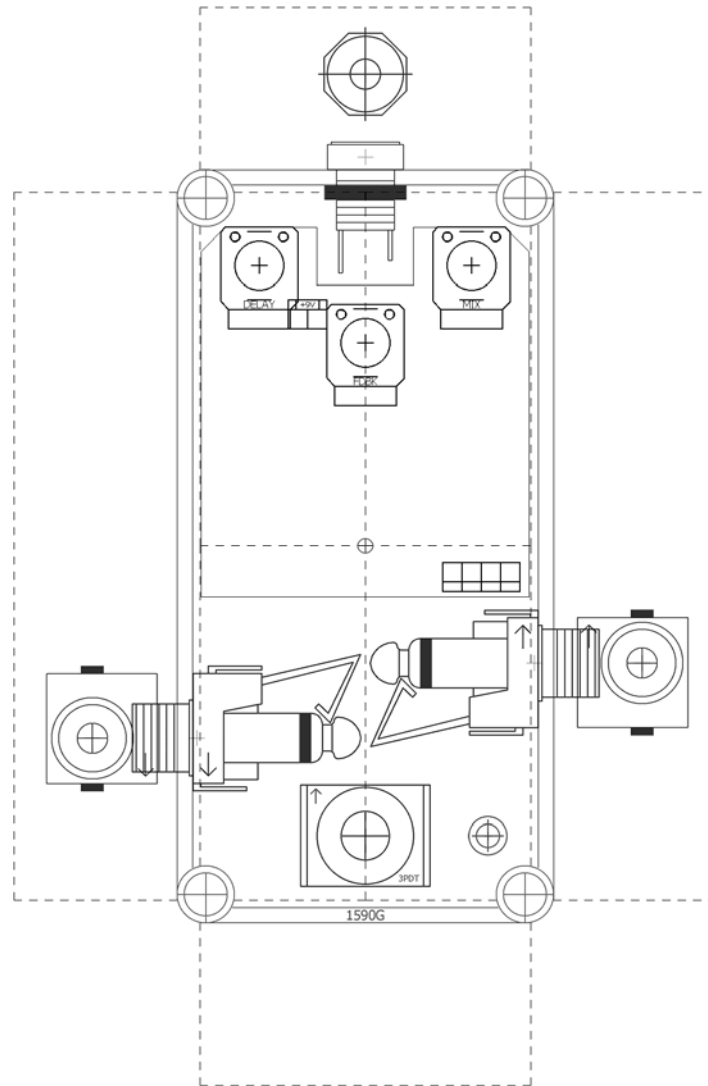
Resistors		Caps		Diodes	
R1	1M	C1	100n	D1	1N5817
R2	220k	C2	220pF	IC's	
R3	220k	C3	1uF	IC1	TL072
R4	22k	C4	1uF	IC2	PT2399
R5	20k	C5	15n	Regulator	
R6	470R	C6	4n7	REG1	LM78L05
R7	100k	C7	1n	Pots	
R8	10k	C8	2n2	DELAY	50kB
R9	10k	C9	100n	FDBK	50kB
R10	10k	C10	100n	MIX	50kB
R11	10k	C11	47n		
R12	10k	C12	15n		
R13	10k	C13	1uF		
R14	20k	C14	1uF		
R15	1k	C15	15n		
R16	10k	C16	22n		
R17	1k	C17	10uF		
R18	10k	C18	100n		
R19	1k5	C19	10uF		
R20	4k7	C20	100n		
R21	10k	C21	100n		
R22	10k	C22	47uF		
		C23	10uF		

Shopping List

Value	QTY	Type	Rating
470R	1	Metal / Carbon Film	1/8W
1k	2	Metal / Carbon Film	1/8W
1k5	1	Metal / Carbon Film	1/8W
4k7	1	Metal / Carbon Film	1/8W
10k	10	Metal / Carbon Film	1/8W
20k	2	Metal / Carbon Film	1/8W
22k	1	Metal / Carbon Film	1/8W
100k	1	Metal / Carbon Film	1/8W
220k	2	Metal / Carbon Film	1/8W
1M	1	Metal / Carbon Film	1/8W
220pF	1	Ceramic	16v min
1n	1	Film	16v min
2n2	1	Film	16v min
4n7	1	Film	16v min
15n	3	Film	16v min
22n	1	Film	16v min
47n	1	Film	16v min
100n	6	Film	16v min
1uF	4	Electrolytic	16v min
10uF	3	Electrolytic	16v min
47uF	1	Electrolytic	16v min
1N5817	1		
TL072	1		
PT2399	1		
LM78L05	1	TL-092 style	
50kB	3	PCB Right Angle, Metal Shaft	9mm

1590G Drill Guide

3.66"W x 5.63"H



The indicator LED must be wired off-board. The “L” pad is wired to the “+” end of the LED and the “-” end wired to your 3PDT switch. R20 is the CLR and is already on the PCB. Possible drill location for the indicator LED shown next to the switch.

Overview

The Mimik is a PT2399-based delay with a filtered/tape-like type voicing.

Controls

- MIX: The delay/dry signal mix.
- FDBK: The numbers of repeats form one to many.
- DELAY: The delay from slapback to about 600ms.

Notes

Self-oscillation with the FDBK control will occur in the last 1/3rd or so of its rotation. If you prefer “infinite” repeats over self-oscillation, try 12k or 15k for R18.

Mods

C16 plays a large part in shaping the repeats. The smaller value rolls off some bass and makes the delay more tape-like. For a fatter/warmer delay use 47n or 100n.

Voltages

IC1	V	IC2	V
1	4.57	1	4.99
2	4.58	2	2.5
3	4.57	3	0
4	0	4	0
5	4.57	5	2.75
6	4.57	6	2.473
7	4.57	7	0.68
8	9.13	8	0.7
REG	V	9	2.5
I	9.13	10	2.5
G	0	11	2.5
O	4.99	12	2.5
		13	2.5
		14	2.5
		15	2.5
		16	2.5

MIMIK

(c) 2016 madbeanpedals

