

SNACK SHACK

FX TYPE: FUZZ

PCB artwork ©2011 madbeanpedals

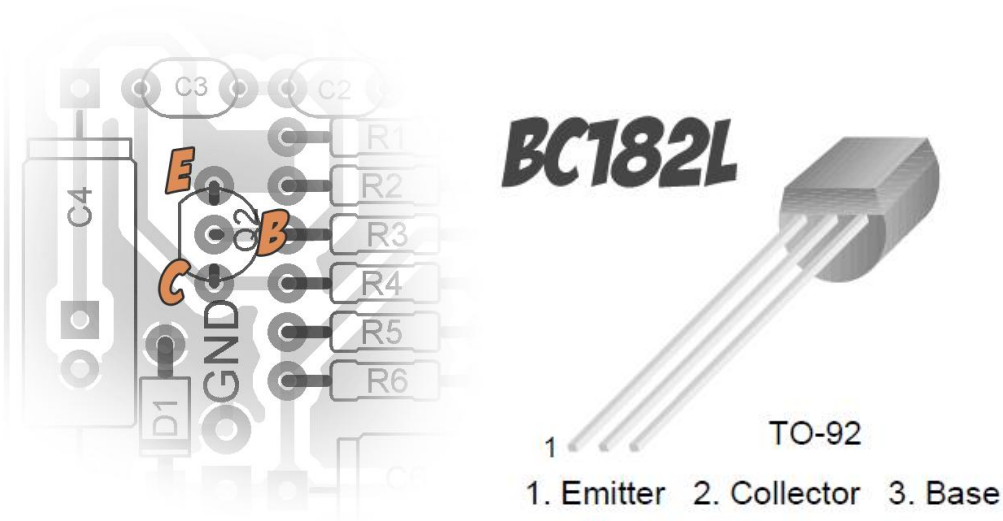
Release date: 06.11.11

Ver.2

The **Snack Shack** hails from the D.A.M. Meathead™, which is nothing more than a fancy-pants Colorsound One Knob Fuzz™. It has only one control, “Dirt”, which sets the output volume. This is high gain fuzz, but responds well to changes in the volume knob of a guitar.

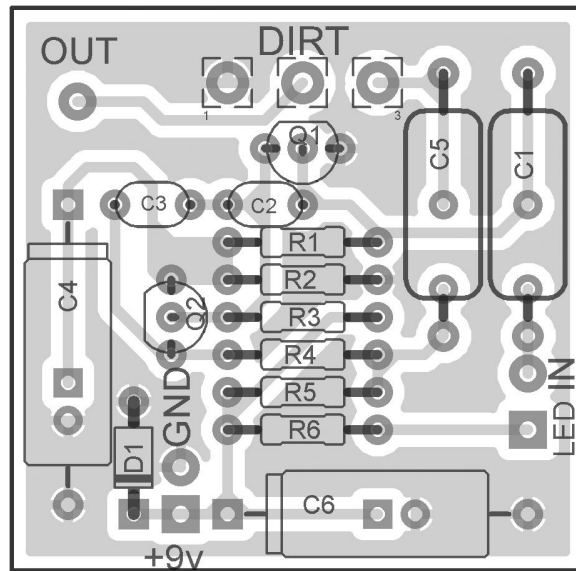
Build Notes

- Stock unit uses a [BC182L](#) for Q2, but you can sub any number of bi-polar NPN transistors here. The BC182L has a pinout of E-C-B. The SnackShack layout was created for a transistor with the more common E-B-C. This allows you to swap out many different transistors for Q2 without having to bend the leads (whereas you only need do so with the BC182L).
- To increase bass response, try a higher value cap for C1 such as 47n or 100n.
- This version has extra pads underneath the caps to allow you to use either axial or radial types. The spacing for radial electrolytic (C4, C6) is 2.5mm (20mm for axial) and for the film caps (C1, C5) the radial spacing is 6mm (18mm for axial).

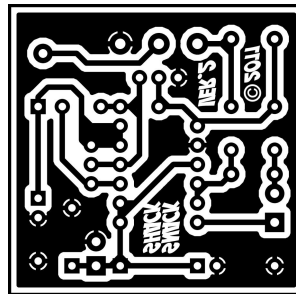


LAYOUT DIAGRAM

1.53" W x 1.51" H

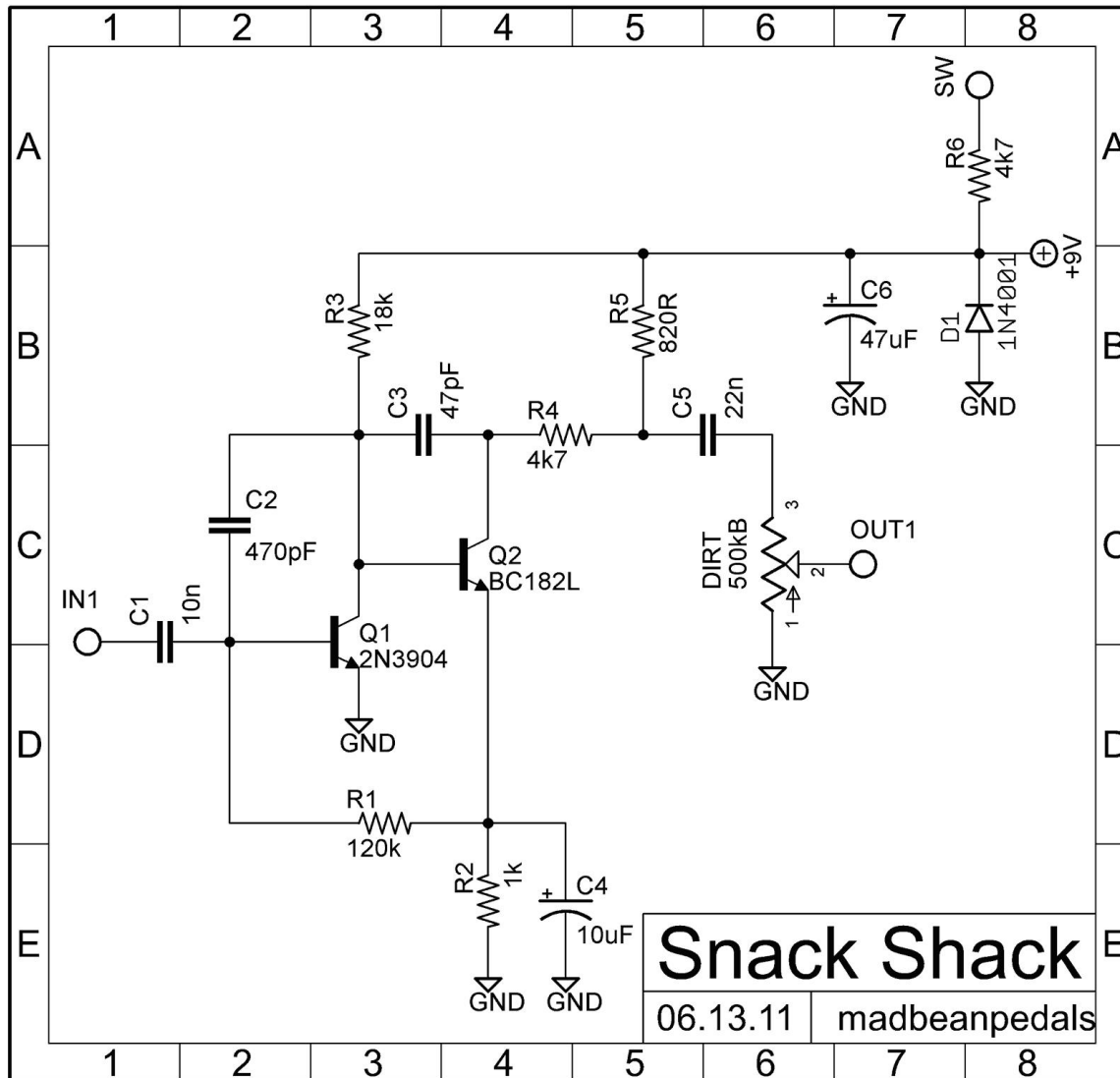


This PCB will fit in a 1590B

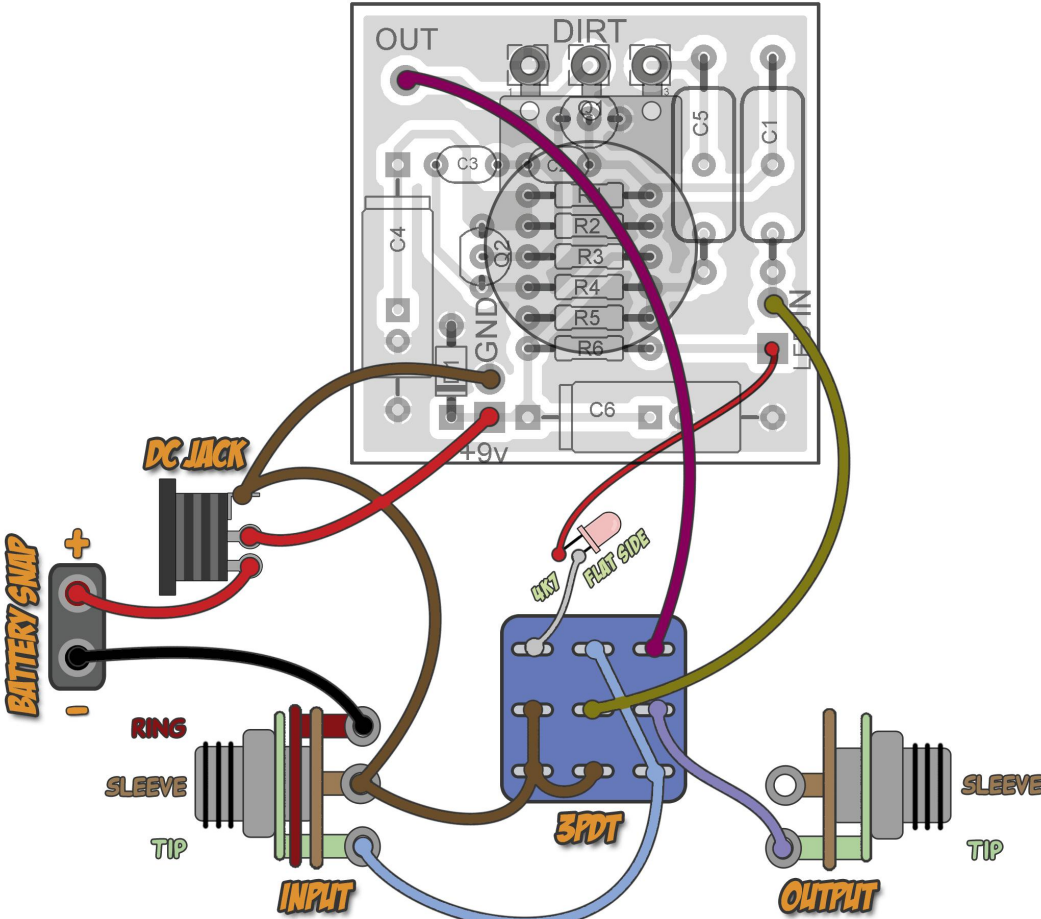


BILL OF MATERIALS

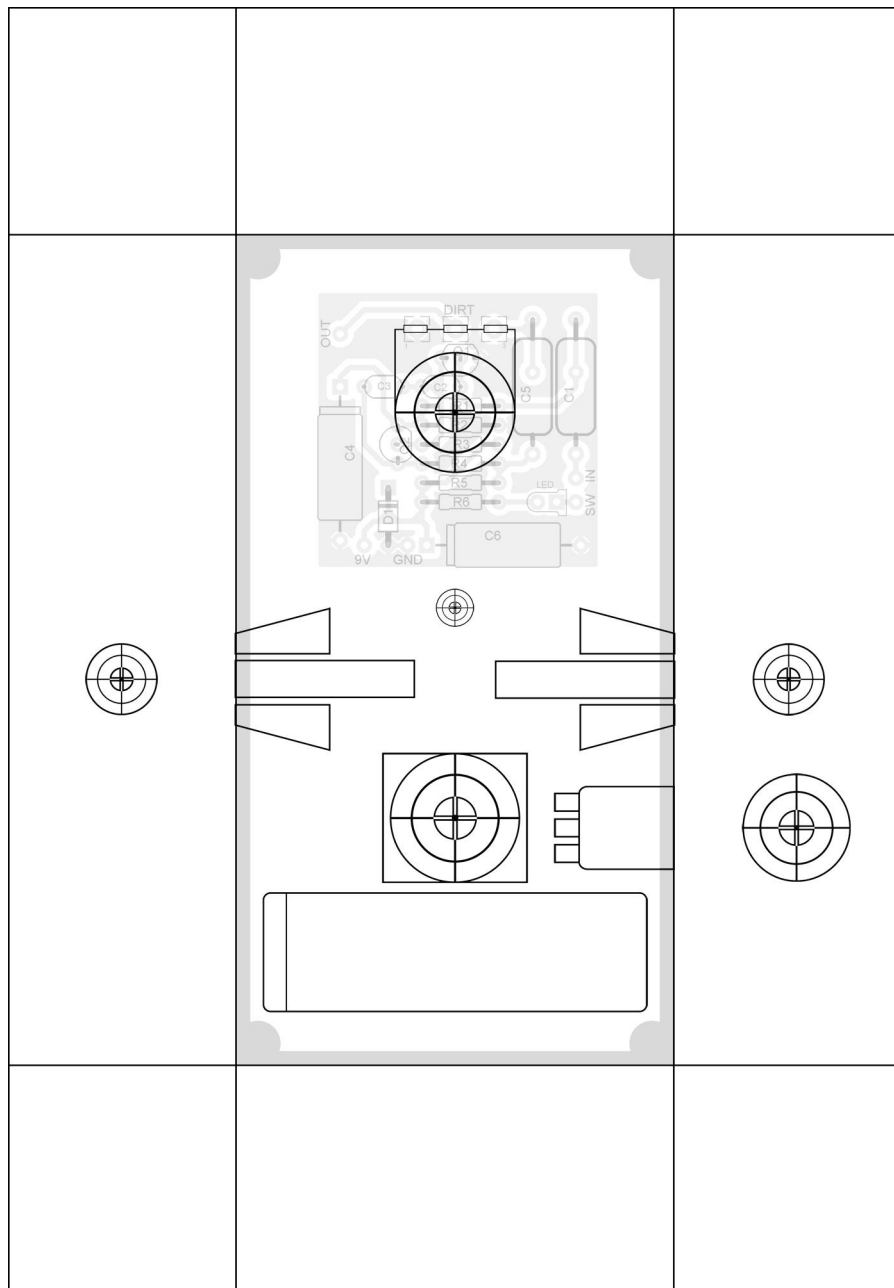
Resistors		Caps		Diodes	
R1	120k	C1	10n	D1	1N4001
R2	1k	C2	470pF	Transistors	
R3	18k	C3	47pF	Q1	2N3904
R4	4k7	C4	10uF	Q2	BC182L
R5	820R	C5	22n	Pot	
R6	4k7	C6	47uF	DIRT	500kB



WIRING DIAGRAM



1590B/1290NS Enclosure



Drilling template provided as-is. Use at your own risk!

Terms of Use



The madbeanpedals effects projects and PCB products are available for non-commercial use to all DIY enthusiasts, hobby builders and pedal makers. They are not intended, nor should they be used, for commercial manufacturing. This means that the PCBs and information in the project documents should not be utilized in the context of professional pedal making. However, building the projects for yourself or your friends or making the occasional “one-off” for sale is entirely permissible. The sale of PCBs or kits using the included PCB artwork is strictly prohibited, however.

Please keep in mind that some of the madbeanpedals projects are based upon currently manufactured pedals. Using the projects or PCBs to make cheap knock-off pedal clones for sale on eBay is not only not cool, but potentially hazardous to your karma. While the vast majority of guitar effects circuits are not patented, many pedal manufacturers do hold trademarks over their products. Any attempt to infringe on a manufacturer’s trademark could be met with legal challenges, and madbeanpedals offers no warranty or guarantee against this, should you do so.

build.share.learn.