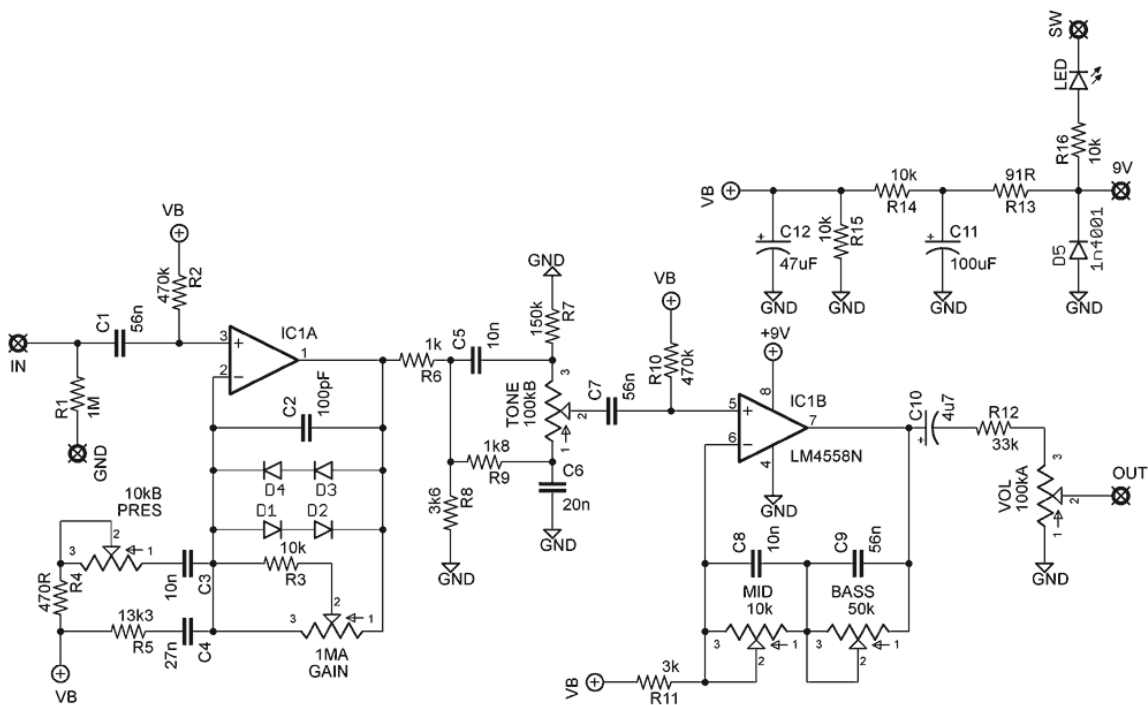
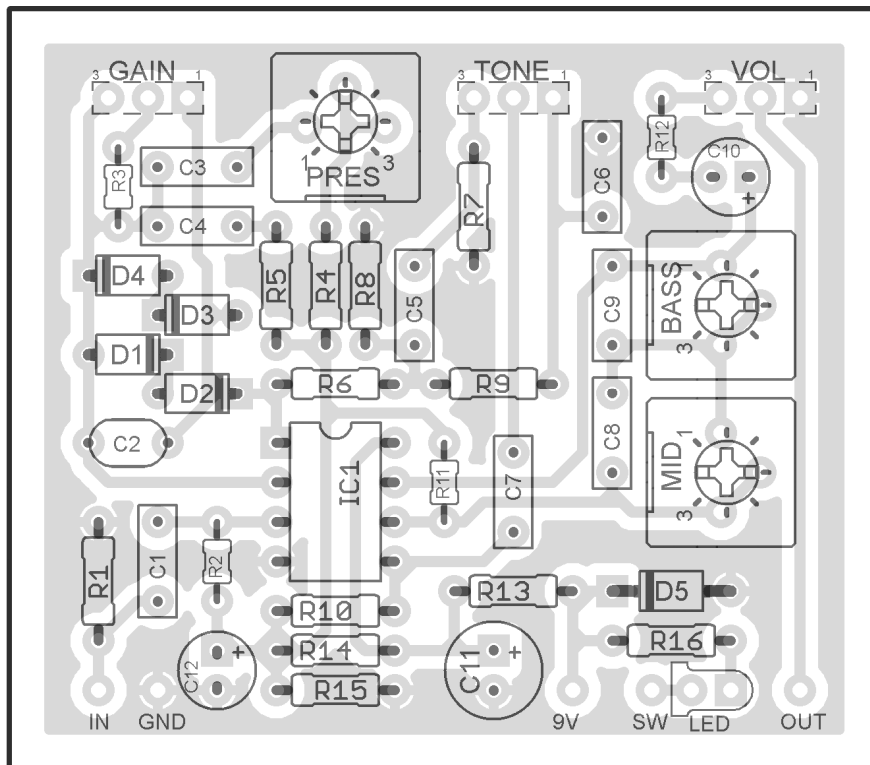


Ver. 3 *updated 08.15.10*

R1	1M	C1	56n	IC1	JRC4558
R2	470k	C2	100pF		
R3	10k	C3	10n	VOL	100kA
R4	470R	C4	27n	TONE	100kB
R5	13k3	C5	10n	GAIN	1MA
R6	1k	C6	20n	BASS	50k
R7	150k	C7	56n	MID	10k
R8	3k6	C8	10n	PRES	10k
R9	1k8	C9	56n		
R10	470k	C10	4u7		
R11	3k	C11	100uF		
R12	33k	C12	47uF		
R13	91R				
R14	10k	D1 - D4	1N914		
R15	10k	D5	1n4001		
R16	10k				

2.16"W x 1.89"H (including borders)

