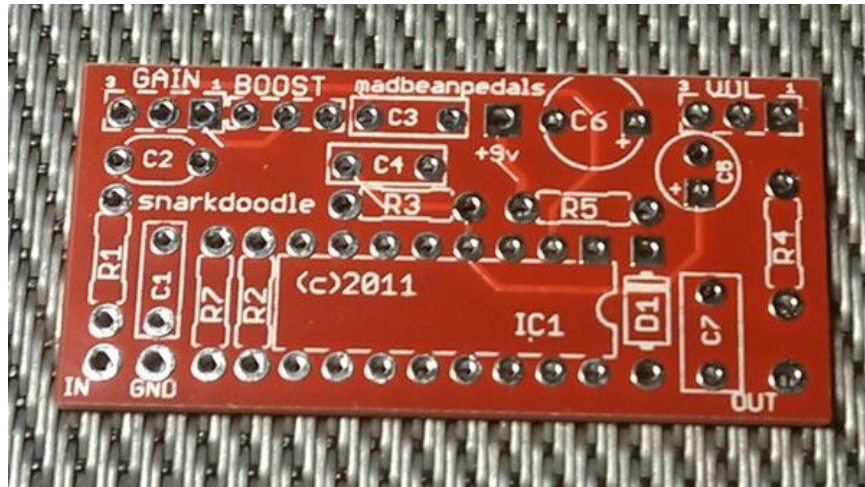


SNARKDOODLE



FX TYPE: OVERDRIVE/FUZZ

Based on the Tube Sound Fuzz™

PCB artwork ©2011 madbeanpedals

Release date: 04.03.11

The Craig Anderton Tube Sound Fuzz is a classic DIY project that has been built, modified and abused for years. The design was recently popularized commercially with the Way Huge® Red Llama™ (with minor tweaks to the original design). The effect is based off a CMOS Hex inverter to generate thick and meaty fuzz. But, this is no one-trick pony. There are a variety of more subtle overdrive tones to be found with the gain pot turned down. The TSF/Red Llama can also be a fairly low gain overdrive or boost with the Gain ¼ up and the volume knob at over ½. The tone of the effect is a moderate mid-range cut and a certain amount of depth (dimensionality) added to the guitar signal. It is a terrific project, and one that every DIY enthusiast should build!

This version of the Snarkdoodle allows you to build the Tube Sound Fuzz, Red Llama or a Hybrid version if you wish. Please refer to the BOM to see what values are changed between the three versions. Note that the Red Llama does not use the **Boost** switch.

The controls are as follows

GAIN: The overall fuzz level.

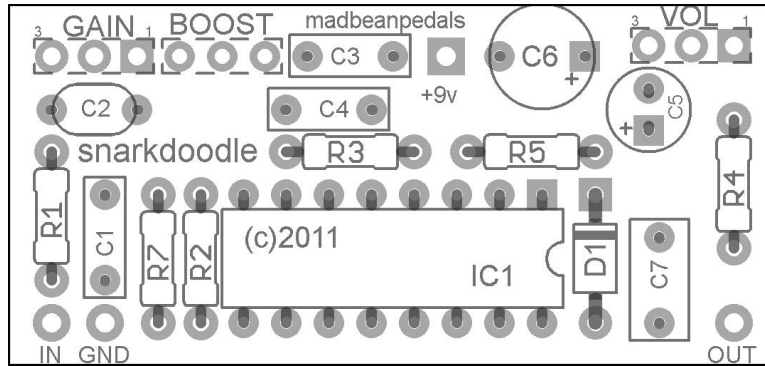
VOL: The total output.

BOOST: This switch lets you toggle between two different gain levels. With the **BOOST** engaged your wallpaper will melt, small children will be traumatized and the dog will leave town.

Notes

You must use the 4049UBE for this project. This is the “unbuffered” version, and it is widely available.

MANUFACTURED VERSION



1.8"W x 0.85"H
This version will fit in a 1590B.

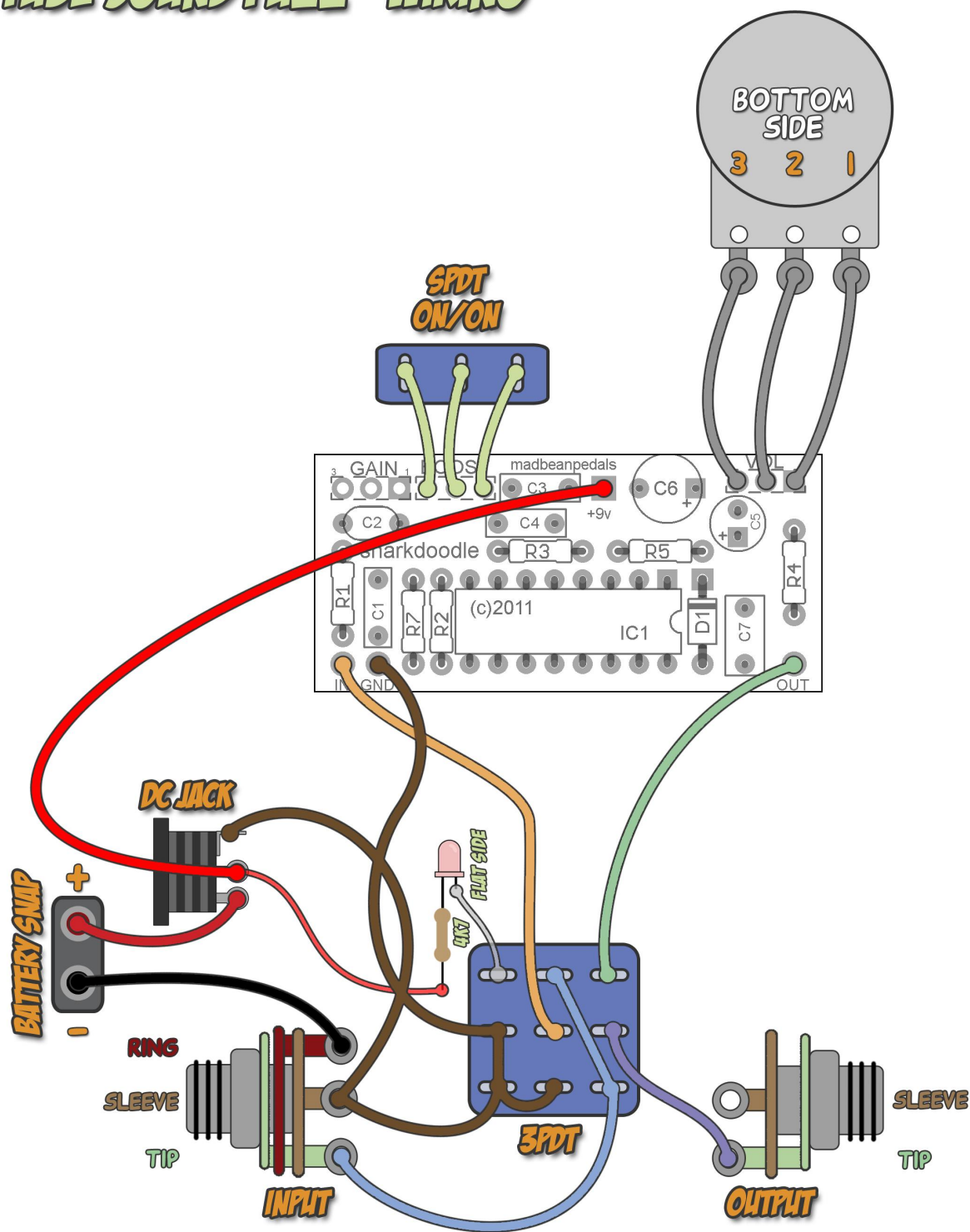
Red Llama Resistors	
R1	100k
R2	100k
R3	1M
R4	1M
R5	1k
R7	-
Caps	
C1	68n
C2	51pf
C3	33n
C4	100pF
C5	10uF
C6	330uF
C7	100n
Diodes	
D1	1N4004
IC	
IC1	CD4049UBE
Switch	
BOOST	-
Pots	
GAIN	1MB
VOL	10kB

Tube Sound Fuzz Resistors	
R1	100k
R2	100k
R3	1M
R4	1M
R5	100R
R7	10M
Caps	
C1	100n
C2	10pF
C3	50n
C4	10pF
C5	10uF
C6	330uF
C7	100n
Diodes	
D1	1N4004
IC	
IC1	CD4049UBE
Switch	
BOOST	SPDT
Pots	
GAIN	1MB
VOL	10kB

Hybrid Resistors	
R1	100k
R2	100k
R3	1M
R4	1M
R5	100R
R7	10M
Caps	
C1	68n
C2	47pF
C3	33n
C4	100pF
C5	10uF
C6	330uF
C7	100n
Diodes	
D1	1N4004
IC	
IC1	CD4049UBE
Switch	
BOOST	SPDT
Pots	
GAIN	1MB
VOL	10kB

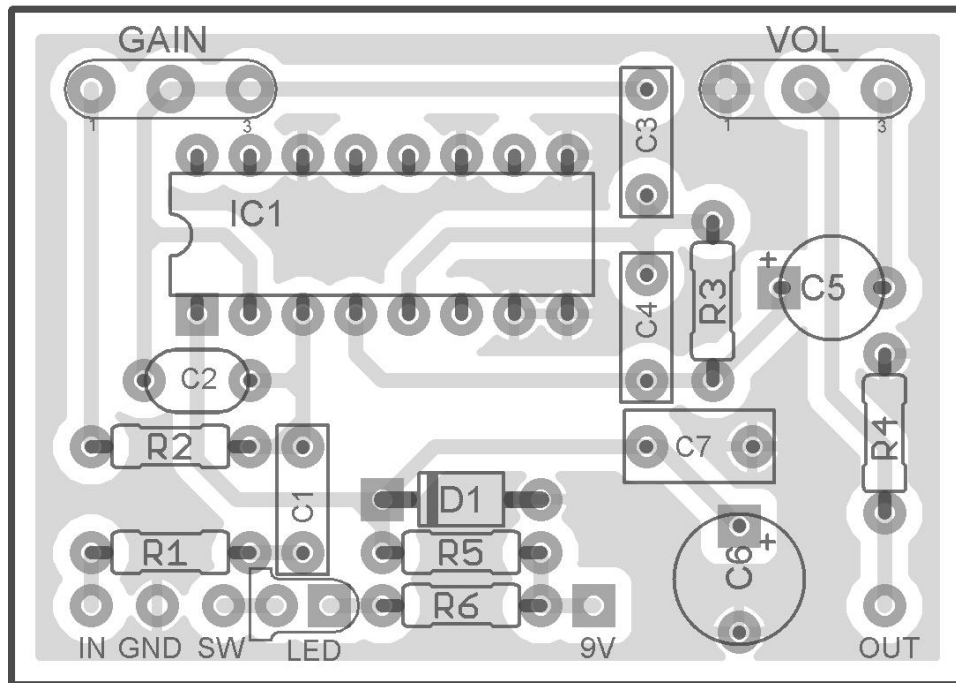
SNARKDOODLE

"TUBE SOUND FUZZ" WIRING

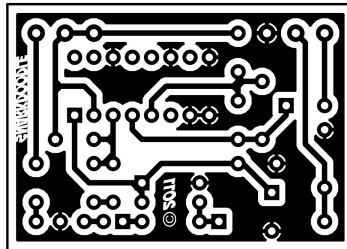


SINGLE SIDED VERSION FOR ETCHING

NOTE THAT THE POTS ARE WIRED 1-2-3 ON THIS VERSION.
THIS VERSION IS THE RED LLAMA ONLY. THE BOOST FUNCTION IS NOT INCLUDED.
R6 IS FOR THE ONBOARD LED CIRCUITRY. 4K7 OR SIMILAR IS SUGGESTED.



1.82" W x 1.23" H (including borders)



This product is intended for DIY use only. Commercial use, including the sale of PCBs, kits or pedals utilizing this information, is strictly prohibited.