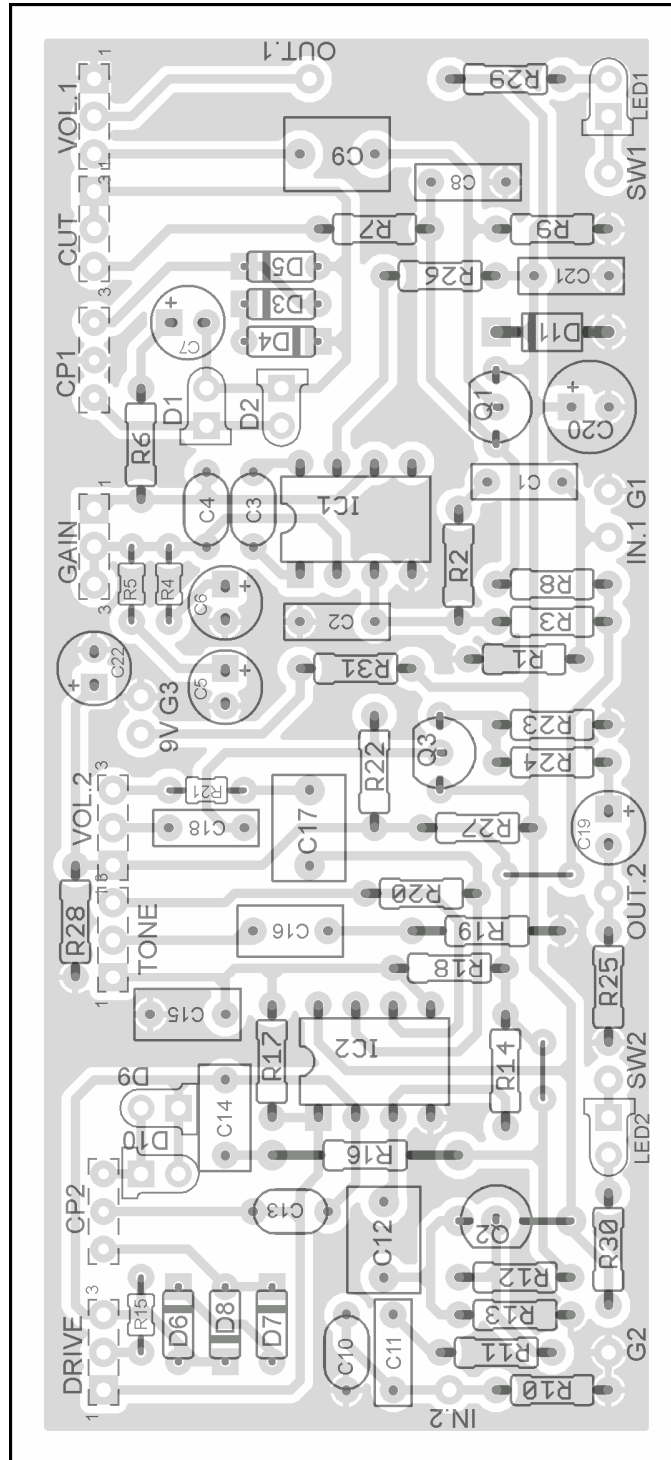


THUMPER

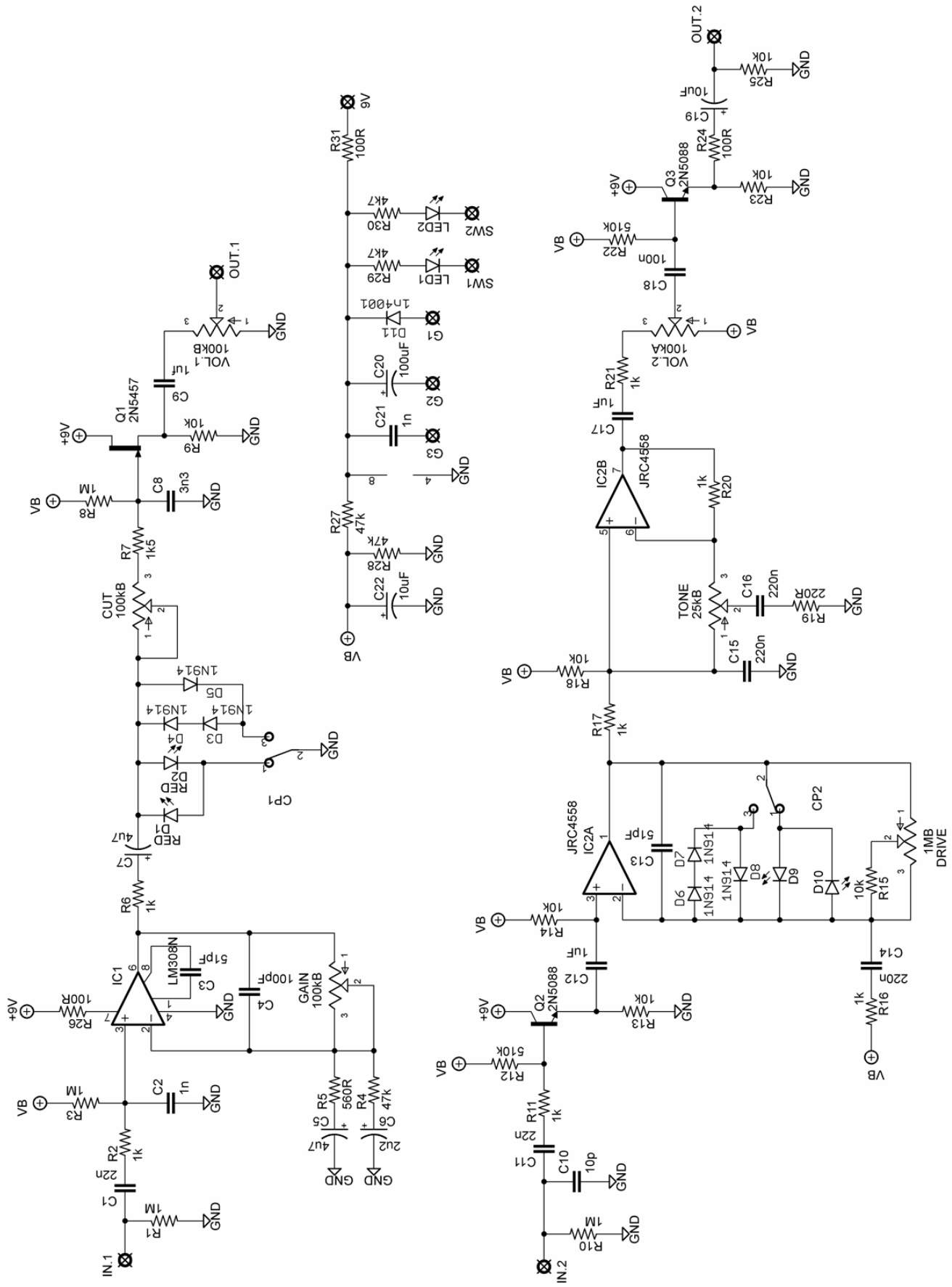
(Based on the Landgraaf Dynamic Overdrive and MoD)

PCB artwork ©2009 madbeanpedals

Ver.1 12.05.09



For non-commercial / personal use only.



Part	Value	Part	Value
R1	1M	C1	22n
R2	1k	C2	1n
R3	1M	C3	51pF
R4	47k	C4	100pF
R5	560R	C5	4u7
R6	1k	C6	2u2
R7	1k5	C7	4u7
R8	1M	C8	3n3
R9	10k	C9	1uf
R10	1M	C10	10p
R11	1k	C11	22n
R12	510k	C12	1uF
R13	10k	C13	51pF
R14	10k	C14	220n
R15	10k	C15	220n
R16	1k	C16	220n
R17	1k	C17	1uF
R18	10k	C18	100n
R19	220R	C19	10uF
R20	1k	C20	100uF
R21	1k	C21	1n
R22	510k	C22	10uF
R23	10k		
R24	100R	IC1	LM308N
R25	10k	IC2	JRC4558
R26	100R		
R27	47k	Q1	2N5457
R28	47k	Q2, Q3	2N5088
R29	4k7		
R30	4k7	CP1, CP2	SPDT
R31	100R		
		CUT	100kB
D1, D2	RED	DRIVE	1MB
D3 - D5	1N4148	GAIN	100kB
D6 - D8	1N914	TONE	25kB
D9, D10	RED	VOL.1	100kB
D11	1n4001	VOL.2	100kA

- **CP1, CP2** are On/Off/On SPDT