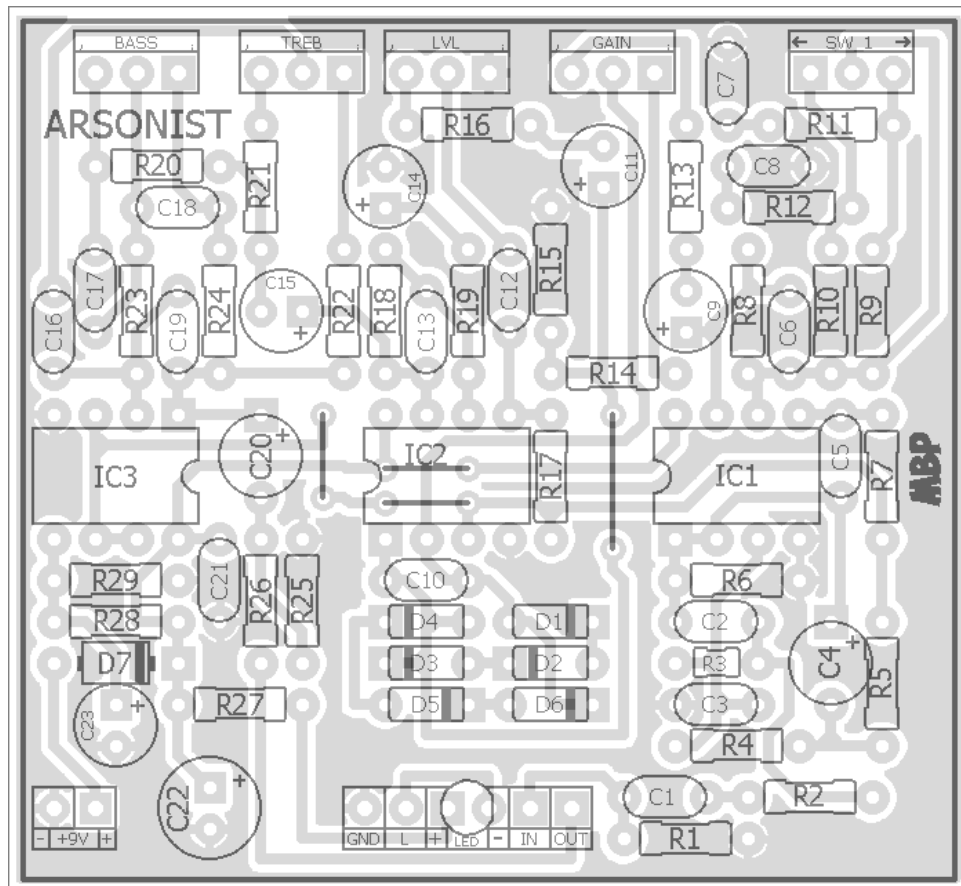


ARSONIST

FX TYPE: Boost

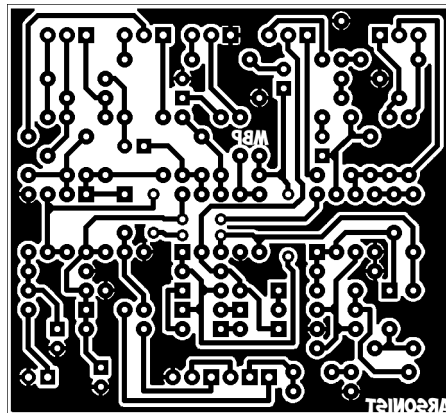
Based on the TC Electronic® Spark Booster™

© 2017 madbeanpedals



Note the jumpers

2.32" W x 2.14" H



Etcher's Paradise projects are intended for DIY use only! Commercial pedal manufacturing using these materials is strictly forbidden

B.O.M.					
Resistors		Caps		Diodes	
R1	1M	C1	100n	D1 - D6	1n914
R2	4k3	C2	1n	D7	1N5817
R3	10k2	C3	1n	IC	
R4	100k	C4	4u7	IC1	OPA2134
R5	47k	C5	100n	IC2	OPA2134
R6	10k	C6	10n	IC3	OPA2134
R7	100k	C7	220n	Switch	
R8	10k	C8	100n	SW_1	SPDT
R9	1M	C9	1uF	Pots	
R10	1M	C10	1n	BASS	50kB
R11	3k9	C11	1uF	GAIN	100kC
R12	3k9	C12	220n	LVL	10kB
R13	22k	C13	1n	TREB	50kB
R14	100k	C14	1uF		
R15	10k	C15	10uF		
R16	1k	C16	8n2		
R17	47k	C17	47n		
R18	4k7	C18	47n		
R19	4k7	C19	1n		
R20	15k	C20	10uF		
R21	3k3	C21	100n		
R22	3k3	C22	100uF		
R23	1k	C23	10uF		
R24	15k				
R25	100k				
R26	100R				
R27	4k7				
R28	100k				
R29	100k				

Use nearest substitution for 10k2 and 4k3.

Shopping List			
Value	QTY	Type	Rating
100R	1	Metal / Carbon Film	1/4W
1k	2	Metal / Carbon Film	1/4W
3k3	2	Metal / Carbon Film	1/4W
3k9	2	Metal / Carbon Film	1/4W
4k3	1	Metal / Carbon Film	1/4W
4k7	3	Metal / Carbon Film	1/4W
10k	3	Metal / Carbon Film	1/4W
10k2	1	Metal / Carbon Film	1/4W
15k	2	Metal / Carbon Film	1/4W
22k	1	Metal / Carbon Film	1/4W
47k	2	Metal / Carbon Film	1/4W
100k	6	Metal / Carbon Film	1/4W
1M	3	Metal / Carbon Film	1/4W
1n	5	Film	16v min.
8n2	1	Film	16v min.
10n	1	Film	16v min.
47n	2	Film	16v min.
100n	4	Film	16v min.
220n	2	Film	16v min.
1uF	3	Electrolytic	16v min.
4u7	1	Electrolytic	16v min.
10uF	3	Electrolytic	16v min.
100uF	1	Electrolytic	16v min.
1n914	6		
1N5817	1		
OPA2134	3		
SPDT	1	On/Off/On	
50kB	2	PCB Soilder Lug	16mm
100kC	1	PCB Soilder Lug	16mm
10kB	1	PCB Soilder Lug	16mm

125B Drill Guide

5.52"W x 7.65"H

