

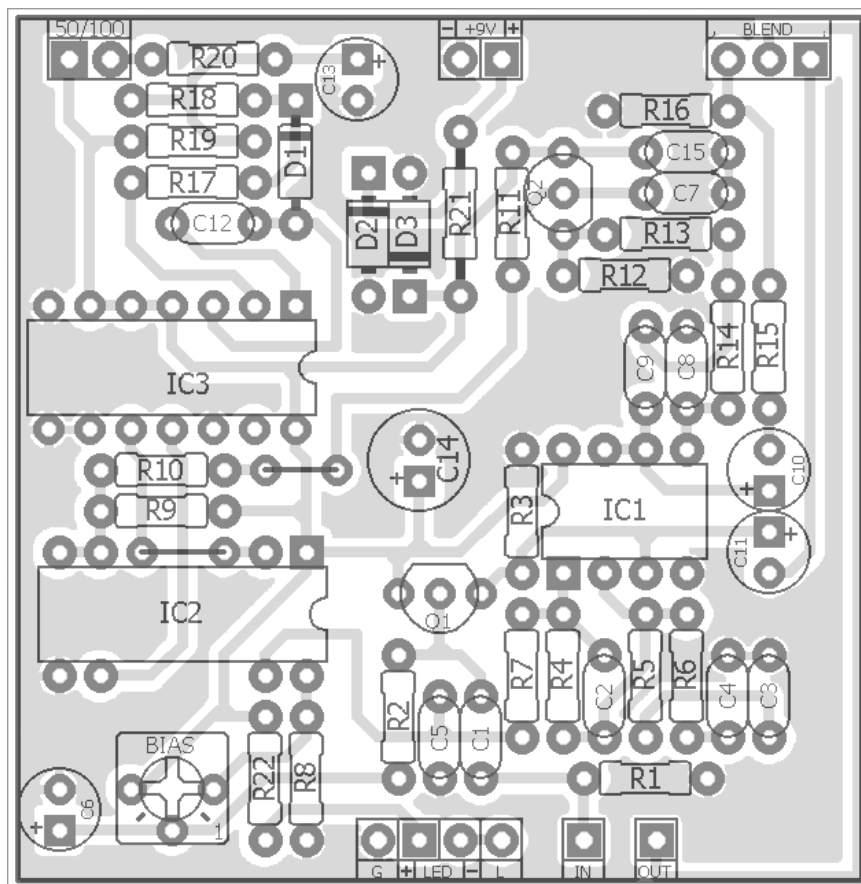
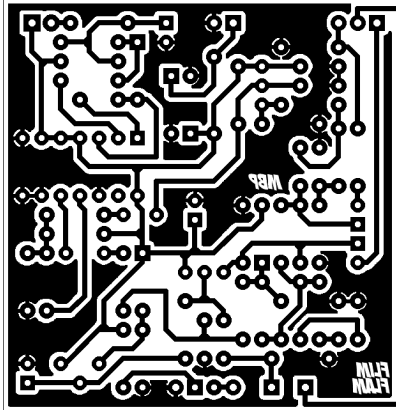
FLIMFLAM

FX TYPE: Delay (Slapback)

Based on the EHX® Double Tracker™

© 2016 madbeanpedals

2.1" W x 2.15" H



- note the jumpers -

Etcher's Paradise projects are intended for DIY use only! Commercial pedal manufacturing using these materials is strictly forbidden.

B.O.M.					
Resistors		Caps		Diodes	
R1	1M	C1	22n	D1	1n4148
R2	100k	C2	33pF	D2	1N4001
R3	12k	C3	4n7	D3	15v Zener
R4	47k	C4	100n	Transistors	
R5	4k7	C5	22n	Q1	2N5088
R6	47k	C6	1uF	Q2	2N5088
R7	1k	C7	1n	IC	
R8	6k8	C8	470pF	IC1	4558
R9	100k	C9	1n	IC2	MN3005
R10	100k	C10	22uF	IC3	4047BE
R11	330k	C11	22uF	Trimmer	
R12	33k	C12	100pF	BIAS	100k
R13	33k	C13	1uF	Switch	
R14	33k	C14	100uF	50/100	SPST
R15	1k	C15	100n	Pot	
R16	1k			BLEND	10kA
R17	6k8				
R18	56k				
R19	100k				
R20	47k				
R21	22R 1/2W				
R22	10k				

Shopping List			
Value	QTY	Type	Rating
22R	1	Metal / Carbon Film	1/2W
1k	3	Metal / Carbon Film	1/4W
4k7	1	Metal / Carbon Film	1/4W
6k8	2	Metal / Carbon Film	1/4W
10k	1	Metal / Carbon Film	1/4W
12k	1	Metal / Carbon Film	1/4W
33k	3	Metal / Carbon Film	1/4W
47k	3	Metal / Carbon Film	1/4W
56k	1	Metal / Carbon Film	1/4W
100k	4	Metal / Carbon Film	1/4W
330k	1	Metal / Carbon Film	1/4W
1M	1	Metal / Carbon Film	1/4W
33pF	1	Ceramic	24v min.
100pF	1	MLCC / Silver Mica	24v min.
470pF	1	Ceramic	24v min.
1n	2	Film	24v min.
4n7	1	Film	24v min.
22n	2	Film	24v min.
100n	2	Film	24v min.
1uF	2	Electrolytic	24v min.
22uF	2	Electrolytic	24v min.
100uF	1	Electrolytic	24v min.
1n4148	1		
1N4001	1		
15v Zener	1	Zener	1W
2N5088	2		
4558	1		
MN3005	1		
4047BE	1		
100k	1	Bourns 3362p	
SPST	1	or, SPDT	
10kA	1	9, 12 or 16mm	

1590B Drill Guide

4.43"W x 6.47"H

