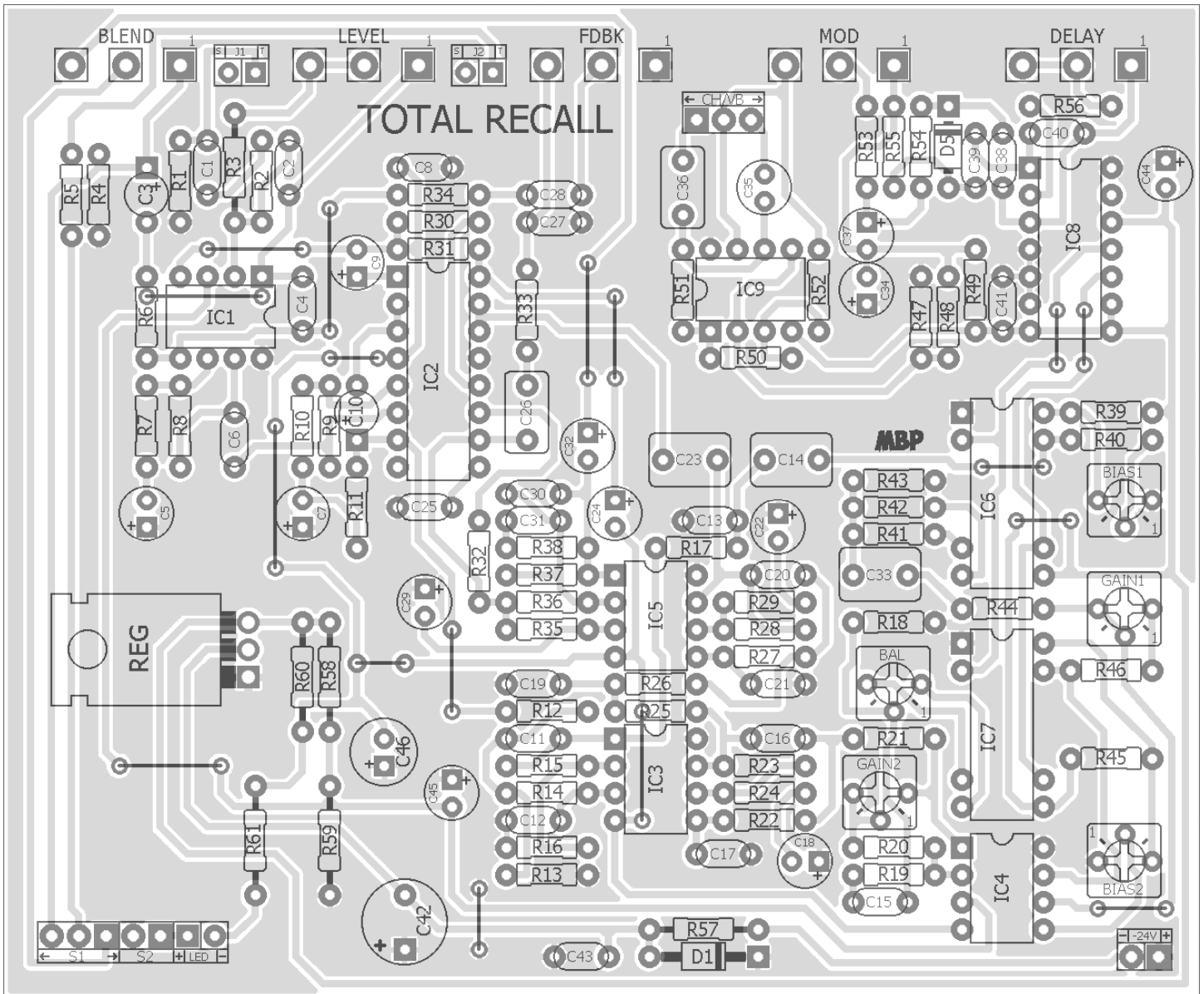


TOTAL RECALL

FX TYPE: Delay

Based on the EHX® Deluxe Memory Man™

© 2017 madbeanpedals

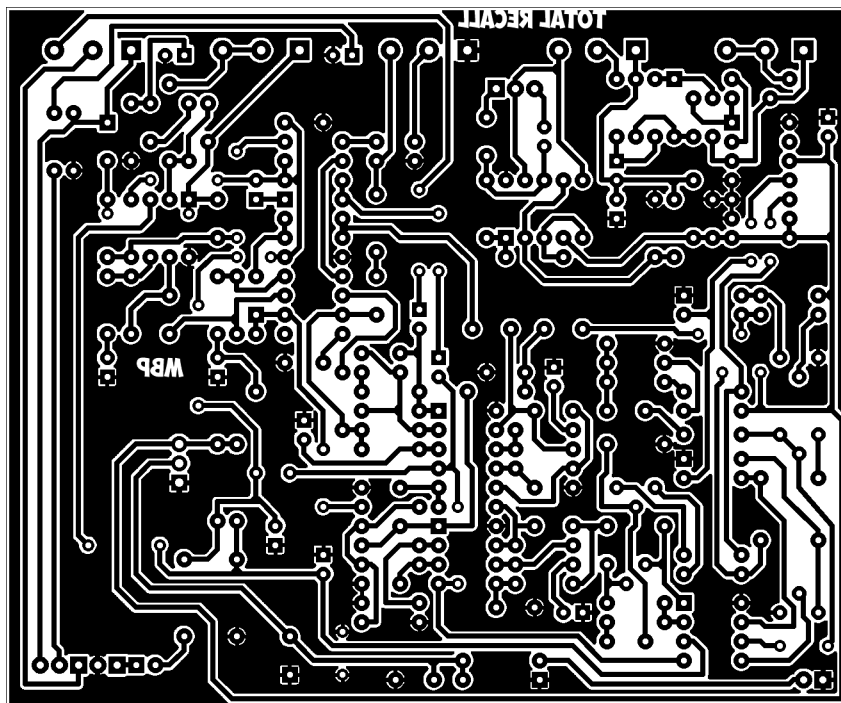


Note there are a number of jumpers for this build.

For detailed information on the Total Recall project, please see the [other project doc](#) (manufactured board). Note this version does not include the option for the BBD expansion board so it will require two MN3005.

Etcher's Paradise projects are intended for DIY use only! Commercial pedal manufacturing using these materials is strictly forbidden.

4.4" W x 3.65" H



Trim this board as close as you can to the ground plane.

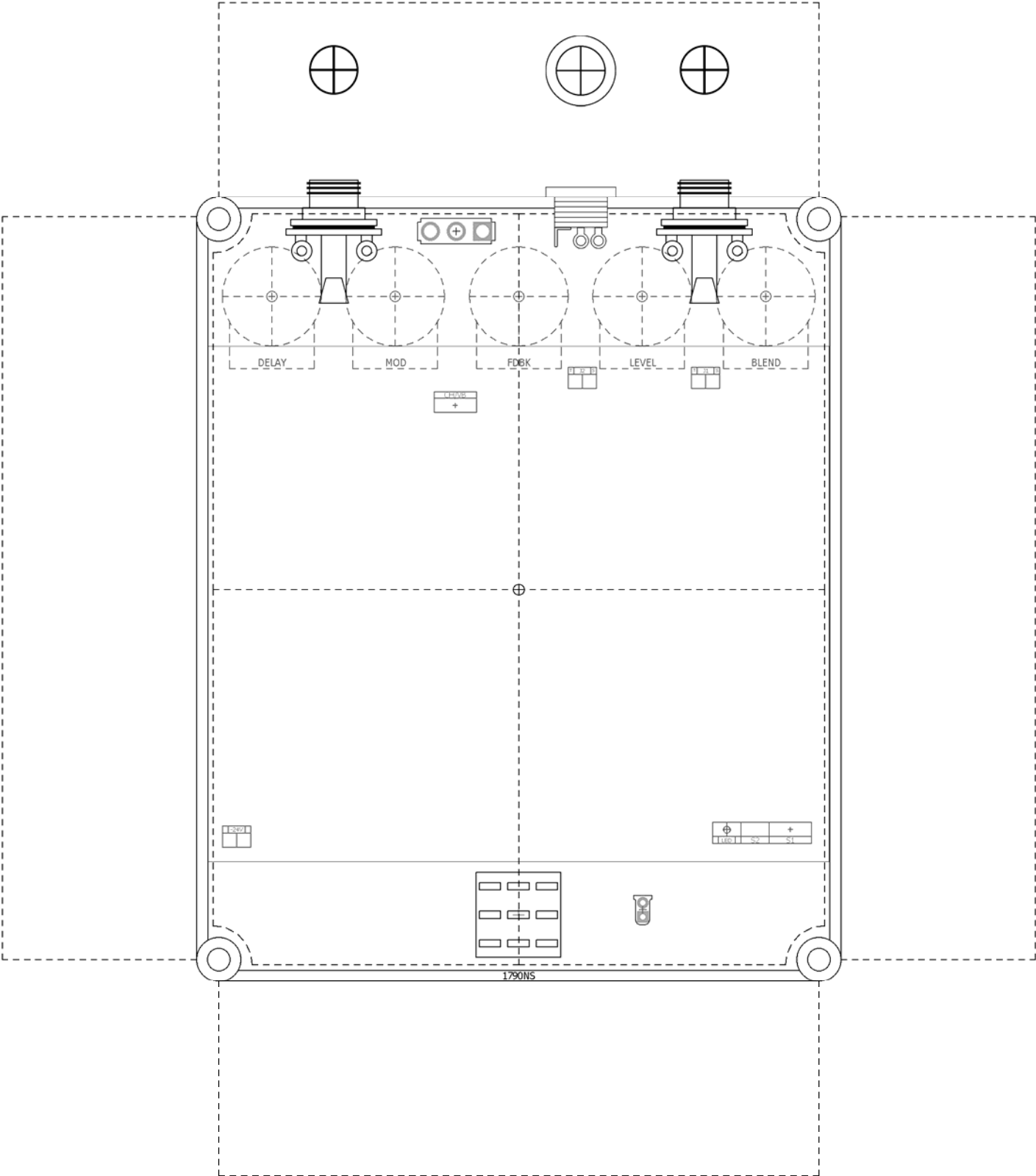
B.O.M.									
Resistors		Resistors		Caps		Caps		Diodes	
R1	2M2	R32	7k5	C1	100n	C32	10uF	D1	1N4751A
R2	100k	R33	1k	C2	27pF	C33	1uF	D5	1N4001
R3	22k	R34	100k	C3	47uF	C34	1uF	IC	
R4	47k	R35	100k	C4	1n2	C35	2u2 BP	IC1	4558
R5	150R	R36	240k	C5	1uF	C36	470n	IC2	NE570
R6	100k	R37	180k	C6	220n	C37	2u2	IC3	4558
R7	200k	R38	330k	C7	10uF	C38	1n	IC4	4558
R8	200k	R39	6k8	C8	100n	C39	1n	IC5	4558
R9	68k	R40	82k	C9	1uF	C40	240pF	IC6	BBD
R10	68k	R41	2k4	C10	4u7	C41	100n	IC7	BBD
R11	68k	R42	2k4	C11	2n7	C42	470uF	IC8	CD4047
R12	24k	R43	100k	C12	2n7	C43	100n	IC9	4558
R13	51k	R44	100k	C13	33n	C44	10uF	Regulator	
R14	16k	R45	6k8	C14	1uF	C45	10uF	REG	LM7915
R15	33k	R46	39k	C15	220n	C46	100uF	Trimmer	
R16	33k	R47	15k	C16	2n7			GAIN1	100k
R17	1k	R48	3k3	C17	2n7			GAIN2	100k
R18	100k	R49	13k	C18	4u7			BIAS1	100k
R19	680k	R50	910k	C19	47n			BIAS2	100k
R20	100k	R51	910k	C20	2n7			BAL	5k
R21	16k	R52	120k	C21	2n7			Switch	
R22	16k	R53	7k5	C22	4u7			CH/VB	On/On
R23	33k2	R54	27k	C23	1uF			Pots	
R24	24k3	R55	27k	C24	1uF			DELAY	100kB
R25	470R	R56	8k2	C25	3n9			FDBK	10kA
R26	15k	R57	240R	C26	470n			BLEND	10kB
R27	16k	R58	100k	C27	47n			LEVEL	1MA
R28	15k	R59	100k	C28	22n			MOD	100kB
R29	39k	R60	10R	C29	1uF				
R30	11k	R61	10k	C30	150pF				
R31	1M5			C31	120pF				

Shopping List

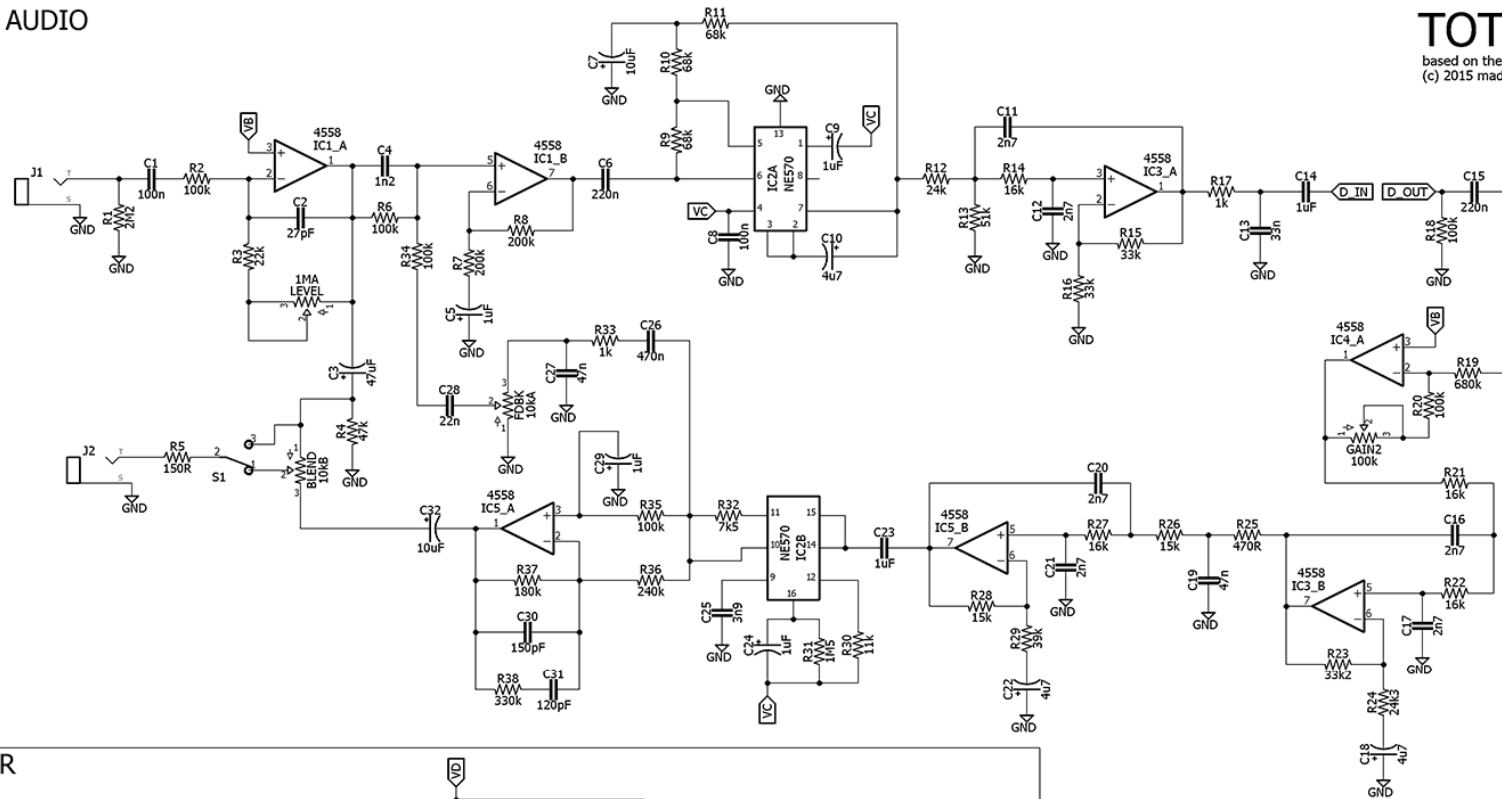
Value	QTY	Type	Rating	Value	QTY	Type	Rating
10R	1	Metal / Carbon Film	1/2W	27pF	1	Ceramic	25v Min.
150R	1	Metal / Carbon Film	1/4W	120pF	1	Ceramic	25v Min.
240R	1	Metal / Carbon Film	1W	150pF	1	Ceramic	25v Min.
470R	1	Metal / Carbon Film	1/4W	240pF	1	MLCC / Mica - 5% tolerance	25v Min.
1k	2	Metal / Carbon Film	1/4W	1n	2	Film	25v Min.
2k4	2	Metal / Carbon Film	1/4W	1n2	1	Film	25v Min.
3k3	1	Metal / Carbon Film	1/4W	2n7	6	Film	25v Min.
6k8	2	Metal / Carbon Film	1/4W	3n9	1	Film	25v Min.
7k5	2	Metal / Carbon Film	1/4W	22n	1	Film	25v Min.
8k2	1	Metal / Carbon Film	1/4W	33n	1	Film	25v Min.
10k	1	Metal / Carbon Film	1/4W	47n	2	Film	25v Min.
11k	1	Metal / Carbon Film	1/4W	100n	4	Film	25v Min.
13k	1	Metal / Carbon Film	1/4W	220n	2	Film	25v Min.
15k	3	Metal / Carbon Film	1/4W	470n	2	Film	25v Min.
16k	4	Metal / Carbon Film	1/4W	1uF	3	Film	25v Min.
22k	1	Metal / Carbon Film	1/4W	1uF	5	Electrolytic	25v Min.
24k	1	Metal / Carbon Film	1/4W	2u2	1	Electrolytic	25v Min.
24k3	1	Metal / Carbon Film	1/4W	2u2	1	Non-Polar	25v Min.
27k	2	Metal / Carbon Film	1/4W	4u7	3	Electrolytic	25v Min.
33k	2	Metal / Carbon Film	1/4W	10uF	4	Electrolytic	25v Min.
33k2	1	Metal / Carbon Film	1/4W	47uF	1	Electrolytic	25v Min.
39k	2	Metal / Carbon Film	1/4W	100uF	1	Electrolytic	25v Min.
47k	1	Metal / Carbon Film	1/4W	470uF	1	Electrolytic	35v
51k	1	Metal / Carbon Film	1/4W	1N4751A	1	30v Zener	
68k	3	Metal / Carbon Film	1/4W	1N4001	1		
82k	1	Metal / Carbon Film	1/4W	4558	5		
100k	10	Metal / Carbon Film	1/4W	NE570	1		
120k	1	Metal / Carbon Film	1/4W	BBD	2	MN3005 / MN3008	
180k	1	Metal / Carbon Film	1/4W	CD4047	1		
200k	2	Metal / Carbon Film	1/4W	LM7915	1		
240k	1	Metal / Carbon Film	1/4W	100k	4	Bourns 3362P	
330k	1	Metal / Carbon Film	1/4W	5k	1	Bourns 3362P	
680k	1	Metal / Carbon Film	1/4W	On/On	1	SPDT	
910k	2	Metal / Carbon Film	1/4W	100kB	2	Alpha Right Angle PCB mount	16mm
1M5	1	Metal / Carbon Film	1/4W	10kA	1	Alpha Right Angle PCB mount	16mm
2M2	1	Metal / Carbon Film	1/4W	10kB	1	Alpha Right Angle PCB mount	16mm
				1MA	1	Alpha Right Angle PCB mount	16mm

1790NS Drill Guide

7.33"W x 8.31"H



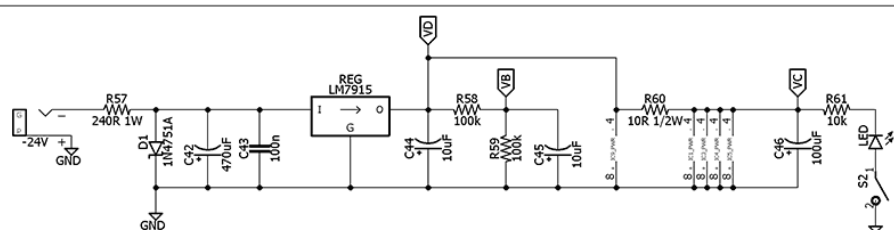
MAIN AUDIO



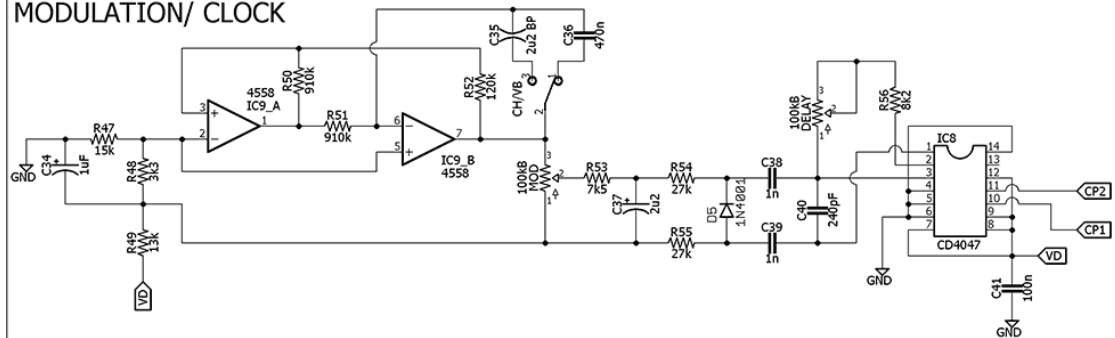
TOTAL RECALL

based on the EHX Deluxe Memory Man (tm)
(c) 2015 madbeanpedals

POWER



MODULATION/ CLOCK



DELAY

