

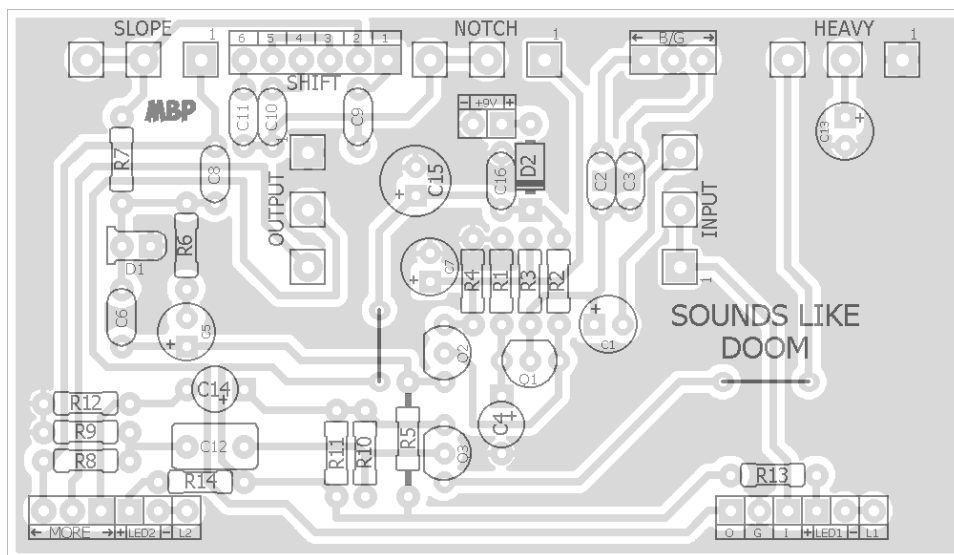
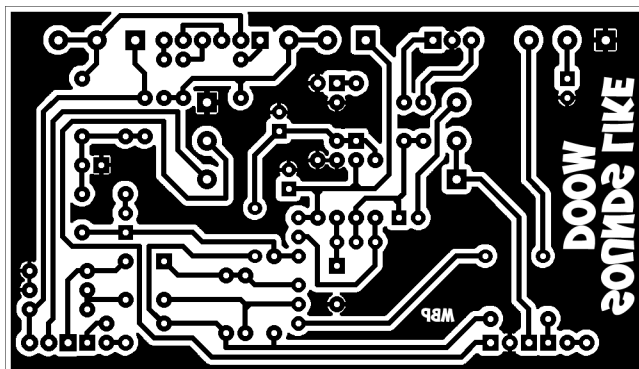
SOUNDS LIKE...DOOM

FX TYPE: Fuzz

Based on the Mountainking® Megalith™

© 2016 madbeanpedals

3.35" W x 1.93" H



- Note the jumpers -

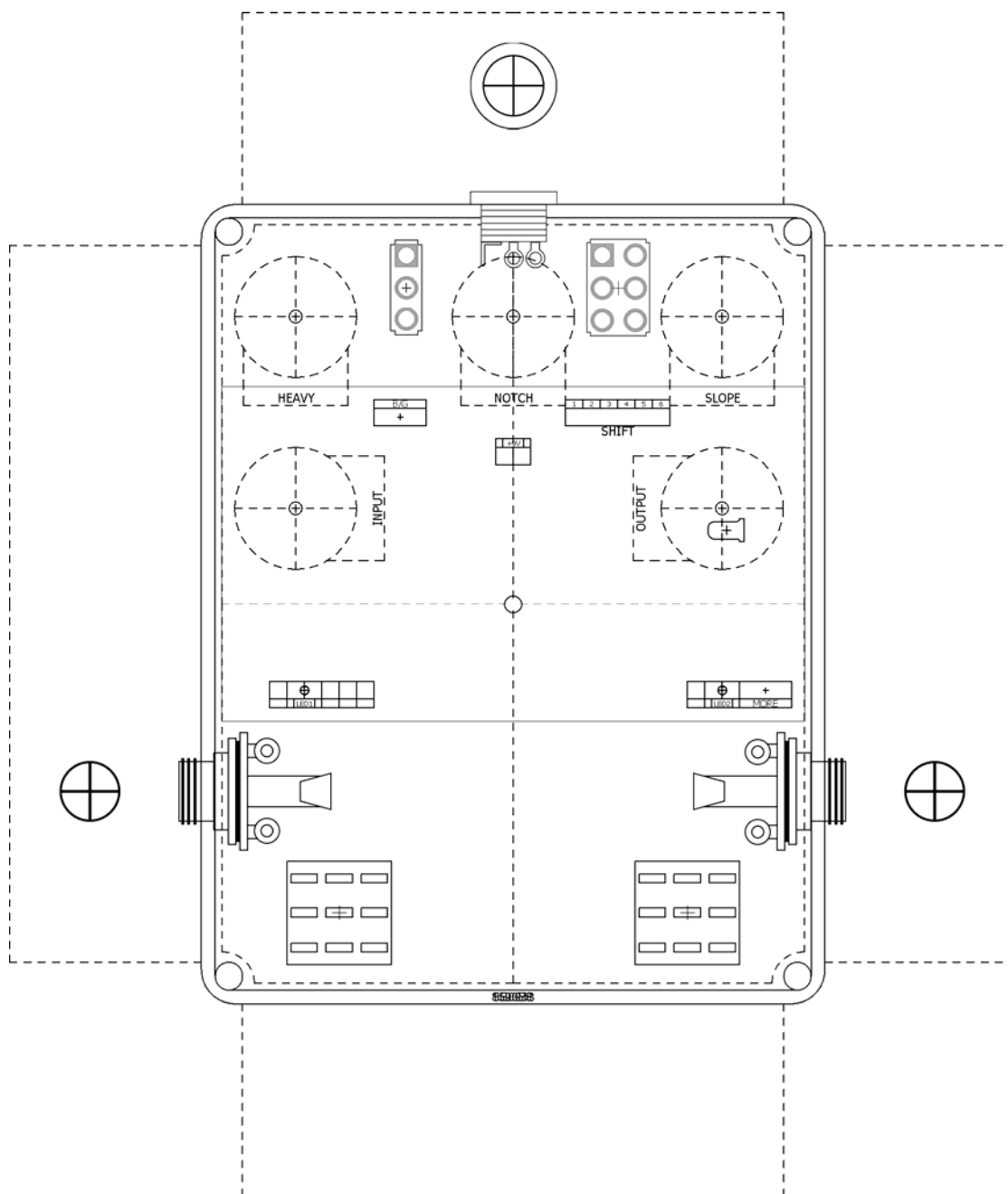
Etcher's Paradise projects are intended for DIY use only! Commercial pedal manufacturing using these materials is strictly forbidden.

B.O.M.					
Resistors		Caps		Diodes	
R1	4k7	C1	10uF	D1	LED
R2	100k	C2	22n	D2	1N5817
R3	47k	C3	4n7	Transistors	
R4	10k	C4	47uF	Q1	BC338
R5	47k	C5	47uF	Q2	2N5088
R6	51k	C6	4n7	Q3	BC338
R7	33k	C7	47uF	Switches	
R8	330k	C8	1n	B/G	On/On
R9	51k	C9	10n	SHIFT	On/On/On
R10	4M7	C10	22n	Pots	
R11	51k	C11	33n	SLOPE	100kB
R12	1M	C12	470n	HEAVY	5kB
R13	4k7	C13	47uF	NOTCH	50kA
R14	4k7	C14	47uF	OUTPUT	100kB
		C15	100uF		
		C16	100n		

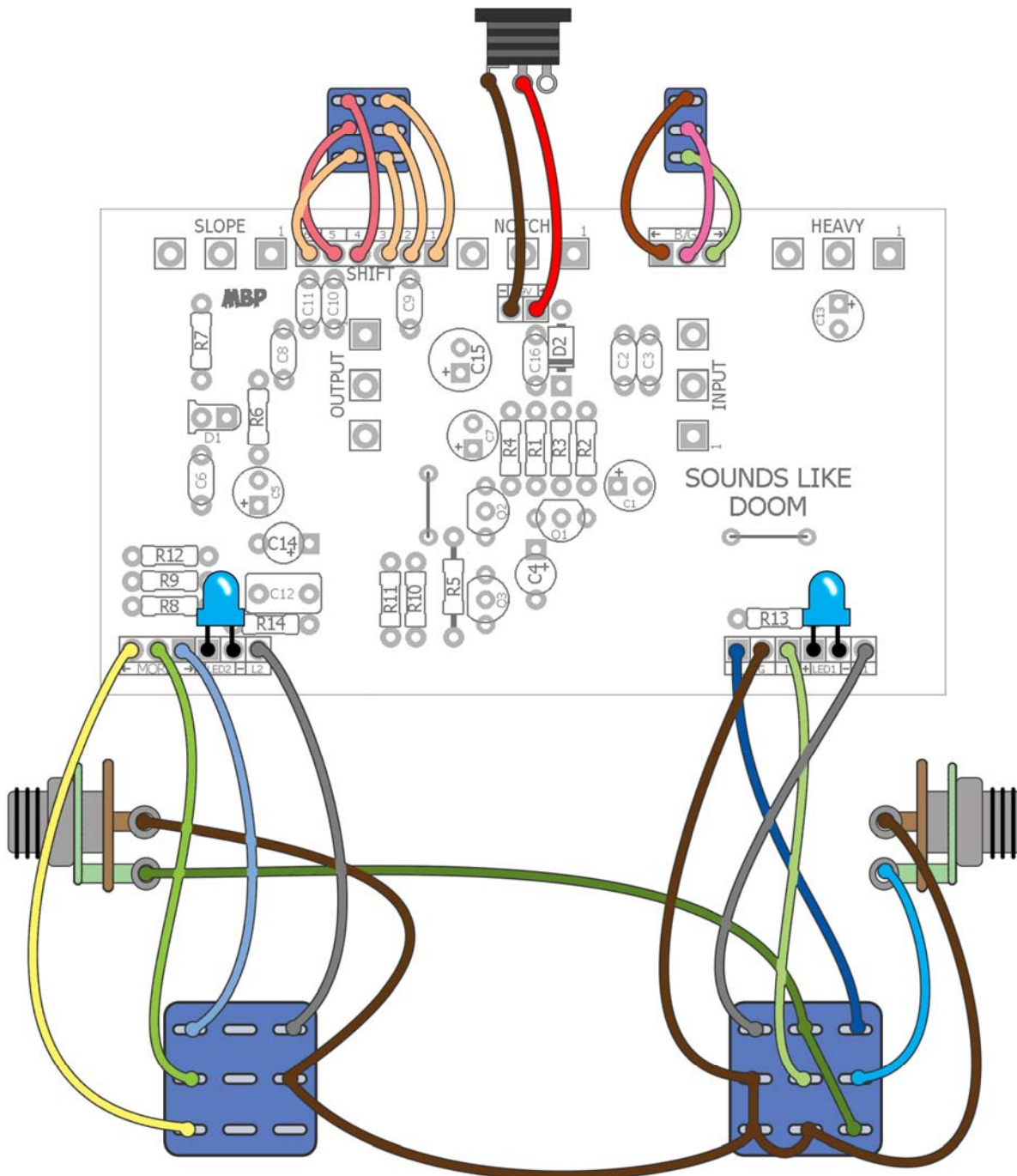
Shopping List			
Value	QTY	Type	Rating
4k7	3	Metal/Carbon Film	1/4W
10k	1	Metal/Carbon Film	1/4W
33k	1	Metal/Carbon Film	1/4W
47k	2	Metal/Carbon Film	1/4W
51k	3	Metal/Carbon Film	1/4W
100k	1	Metal/Carbon Film	1/4W
330k	1	Metal/Carbon Film	1/4W
1M	1	Metal/Carbon Film	1/4W
4M7	1	Metal/Carbon Film	1/4W
1n	1	Film	16v min.
4n7	2	Film	16v min.
10n	1	Film	16v min.
22n	2	Film	16v min.
33n	1	Film	16v min.
100n	1	Film	16v min.
470n	1	Film	16v min.
10uF	1	Electrolytic	16v min.
47uF	5	Electrolytic	16v min.
100uF	1	Electrolytic	16v min.
LED	1	Orange, Diffused	3mm
1N5817	1		
BC338	2		
2N5088	1		
On/On	1	Solder Lug, SPDT	
On/On/On	1	Solder Lug, DPDT	
5kB	1	PCB Right Angle	16mm
50kA	1	PCB Right Angle	16mm
100kB	2	PCB Right Angle	16mm
1MC	1	PCB Right Angle	16mm

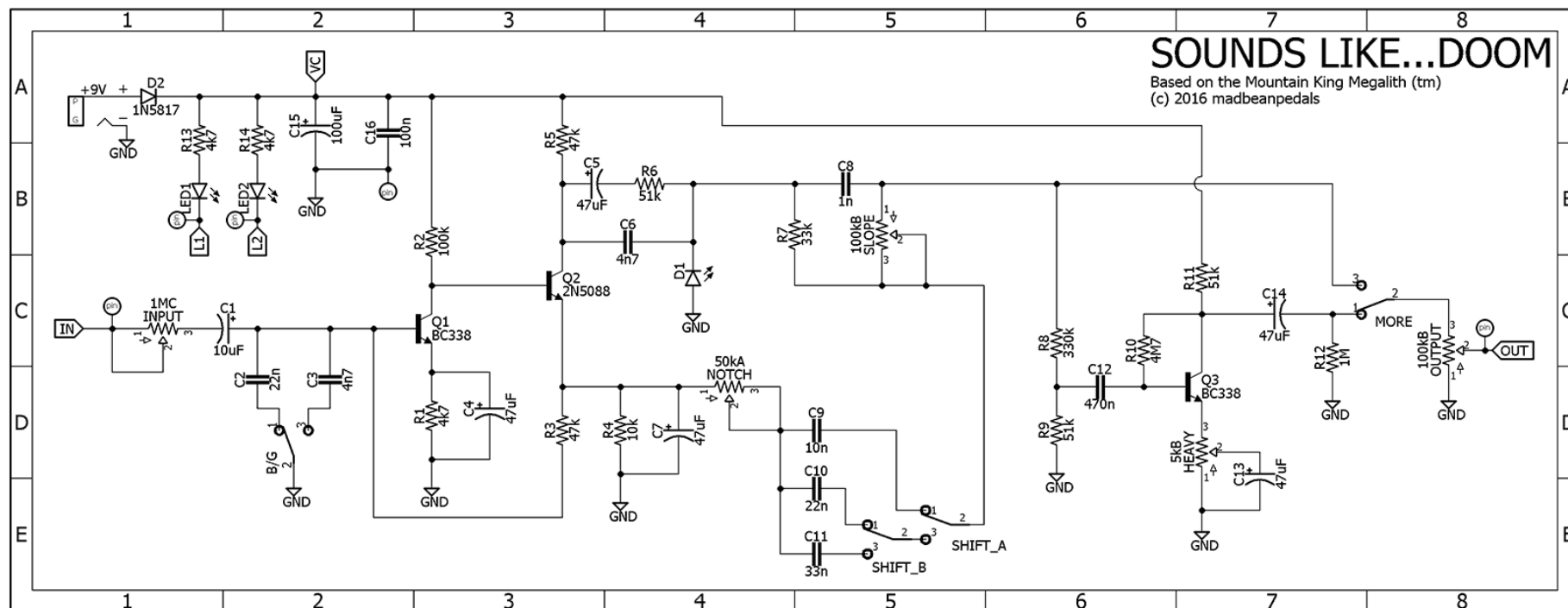
1590BB Drill Guide

5.79"W x 6.82"H



Wiring Guide





Notes

- SLD uses an On/On/On switch for the Shift control instead of a rotary.
- Added B/G switch for choosing between Bass or Guitar.