

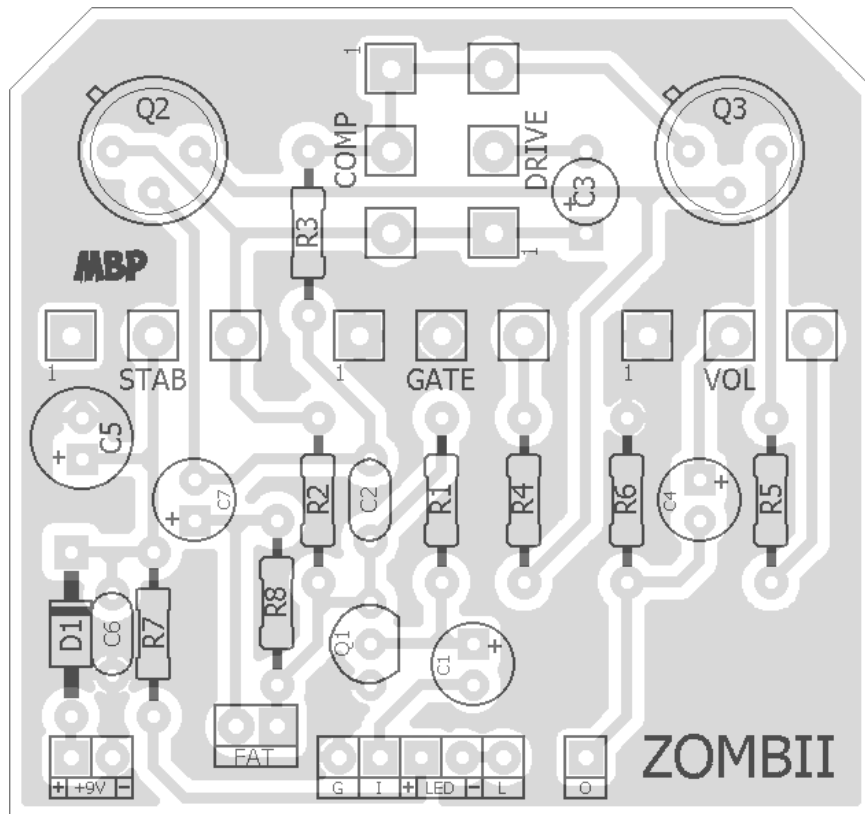
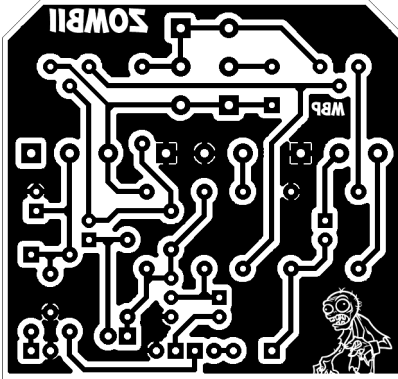
ZOMBII

FX TYPE: Fuzz

Based on the Booteek Fuzz

© 2016 madbeanpedals

2.1" W x 1.98" H



Etcher's Paradise projects are intended for DIY use only! Commercial pedal manufacturing using these materials is strictly forbidden.

B.O.M.					
Resistors		Caps		Diodes	
R1	220k	C1	10uF	D1	1N5817
R2	10k	C2	100n	Transistors	
R3	47k	C3	10uF	Q1	2N3904
R4	470R	C4	10uF	Q2, Q3	GE PNP
R5	5k1	C5	100uF	Switch	
R6	220k	C6	100n	FAT	SPST
R7	4k7	C7	10uF	Pots	
R8	1M			GATE	10kB
				COMP	10kB
				DRIVE	10kB
				VOL	5kB
				STAB	5kB

Shopping List				
Value	QTY	Type	Rating	
470R	1	Metal / Carbon Film	1/4W	
4k7	1	Metal / Carbon Film	1/4W	
5k1	1	Metal / Carbon Film	1/4W	
10k	1	Metal / Carbon Film	1/4W	
47k	1	Metal / Carbon Film	1/4W	
220k	2	Metal / Carbon Film	1/4W	
1M	1	Metal / Carbon Film	1/4W	
100n	2	Film	16v min.	
10uF	4	Electrolytic	16v min.	
100uF	1	Electrolytic	16v min.	
1N5817	1			
2N3904	1			
GE PNP	2	Germanium		
SPST	1	or, SPDT		
10kB	3	PCB Right Angle	16mm	
5kB	2	PCB Right Angle	16mm	

1590B Drill Guide

4.43"W x 6.47"H

