

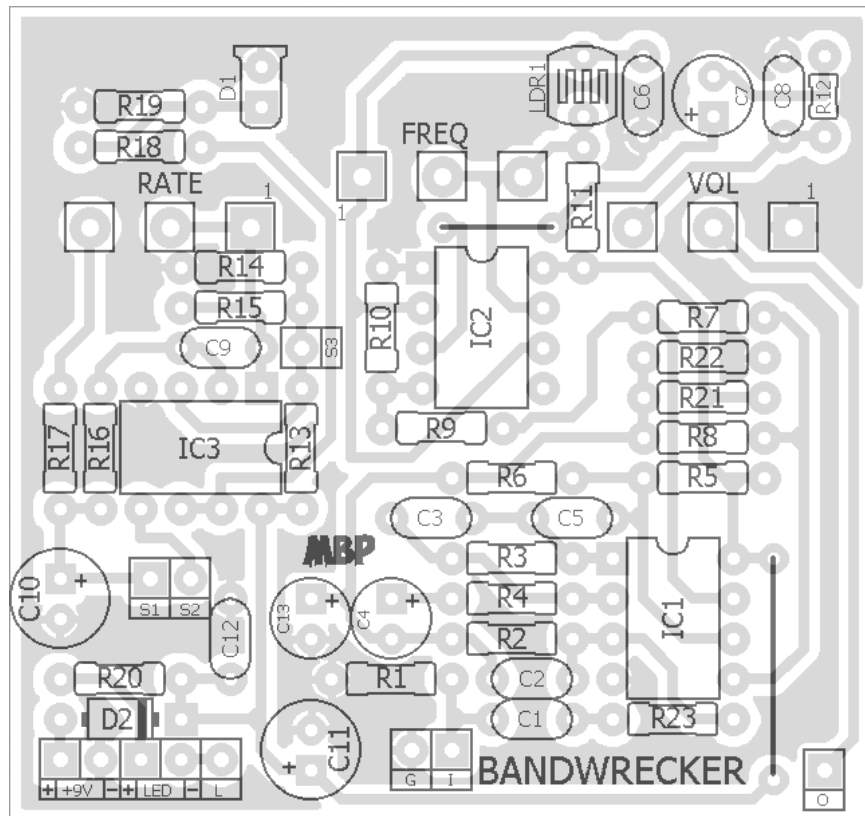
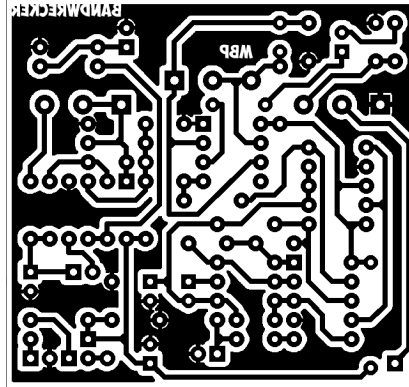
# BANDWRECKER

FX TYPE: Modulation/Filter

Based on the John Hollis Crash Sync™

© 2016 madbeanpedals

2.15" W x 2.03" H



- Note the jumpers -

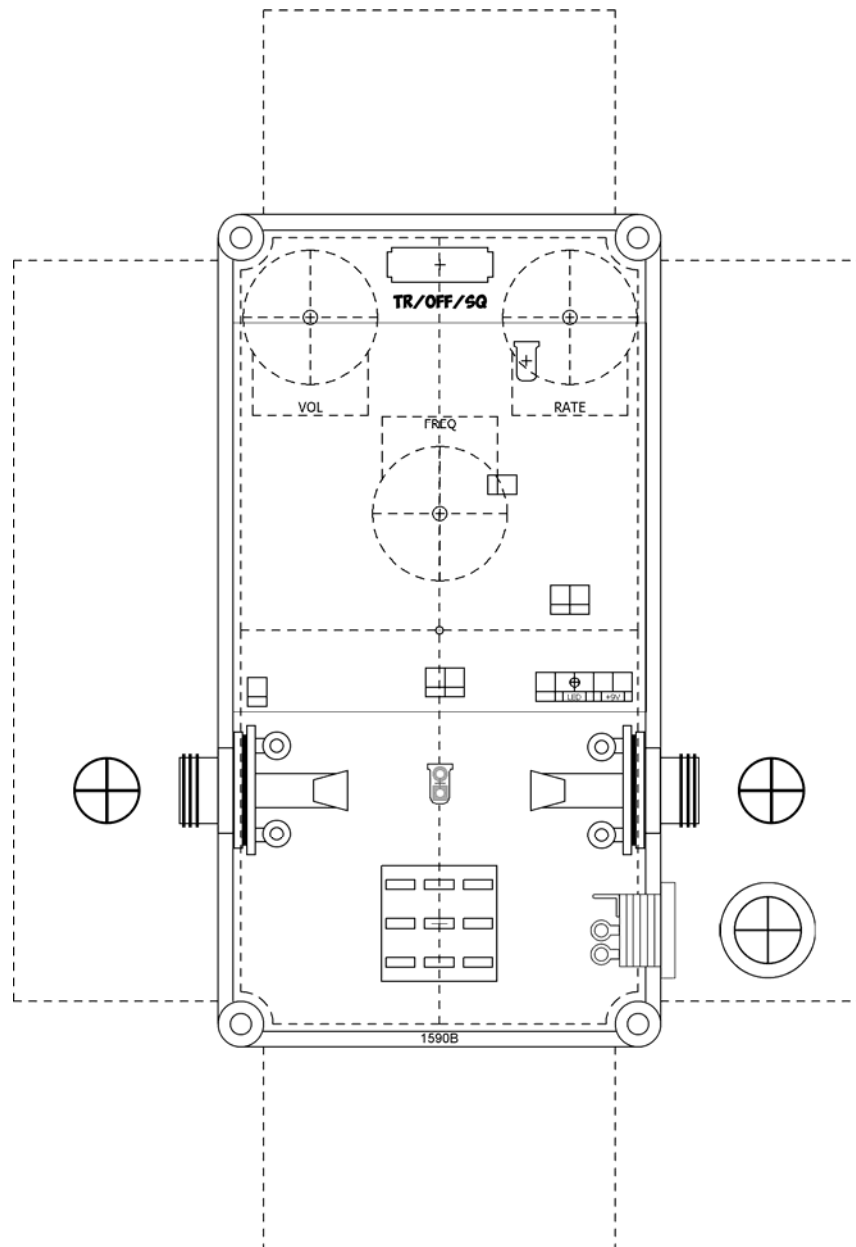
*Etcher's Paradise projects are intended for DIY use only! Commercial pedal manufacturing using these materials is strictly forbidden.*

B.O.M.					
Resistors		Caps		Diodes	
R1	1M	C1	10n	D1	LED
R2	1M	C2	1n	D2	1N5817
R3	470k	C3	330pF	IC's	
R4	1k	C4	10uF	IC1	TL072
R5	1M	C5	47n	IC2	555
R6	56k	C6	47n	IC3	TL062
R7	1M	C7	1uF	Opto	
R8	10k	C8	10n	LDR1	Photocell
R9	10k	C9	10n	Switch	
R10	2k2	C10	100uF	SHAPE	SPDT
R11	4k7	C11	100uF	Pots	
R12	10k	C12	100n	VOL	100kA
R13	220k	C13	10uF	FREQ	100kB
R14	220k			RATE	100kB
R15	220k				
R16	220k				
R17	330R				
R18	330R				
R19	330R				
R20	4k7				
R21	56k				
R22	56k				
R23	150k				

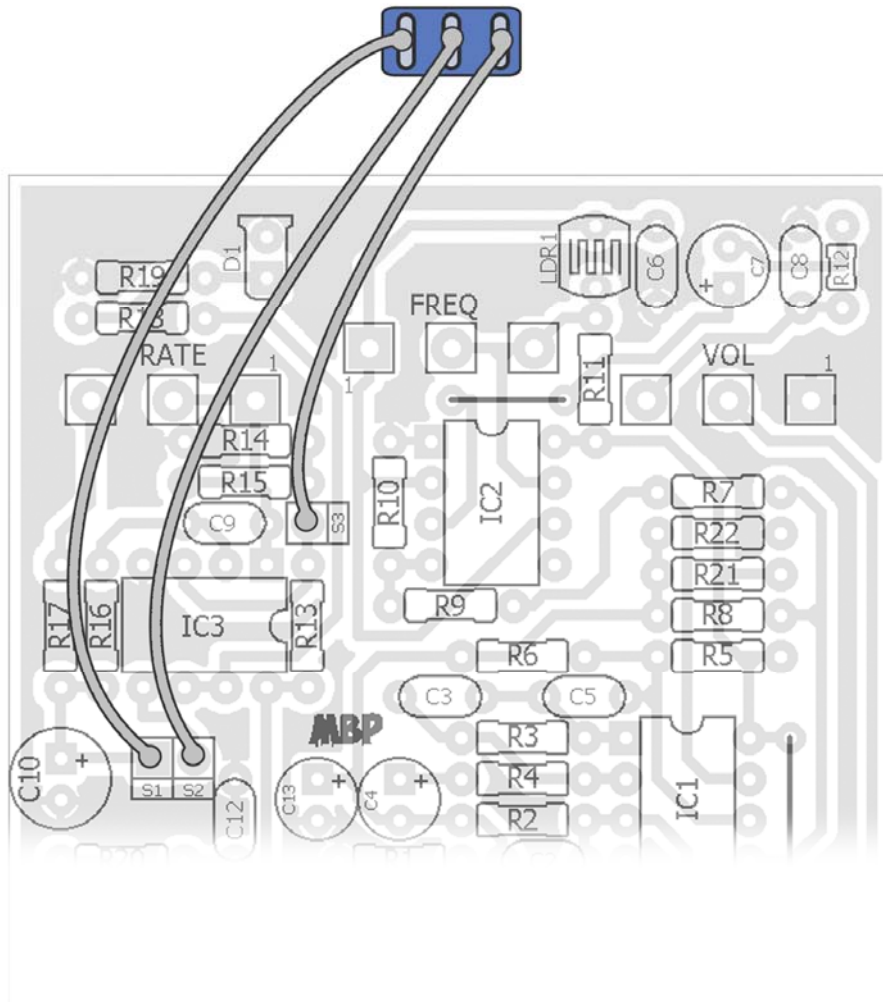
Shopping List			
Value	QTY	Type	Rating
330R	3	Metal/Carbon Film	1/4W
1k	1	Metal/Carbon Film	1/4W
2k2	1	Metal/Carbon Film	1/4W
4k7	2	Metal/Carbon Film	1/4W
10k	3	Metal/Carbon Film	1/4W
56k	3	Metal/Carbon Film	1/4W
150k	1	Metal/Carbon Film	1/4W
220k	4	Metal/Carbon Film	1/4W
470k	1	Metal/Carbon Film	1/4W
1M	4	Metal/Carbon Film	1/4W
330pF	1	Ceramic	16v min.
1n	1	Film	16v min.
10n	3	Film	16v min.
47n	2	Film	16v min.
100n	1	Film	16v min.
1uF	1	Electrolytic	16v min.
10uF	2	Electrolytic	16v min.
100uF	2	Electrolytic	16v min.
LED	1	White, Clear or Red, Diffused	3mm
1N5817	1		
TL072	1		
555	1		
TL062	1		
Photocell	1	8002	
SPDT	1	On/Off/On, Solder Lug	
100kA	1	PCB Right Angle	16mm
100kB	2	PCB Right Angle	16mm

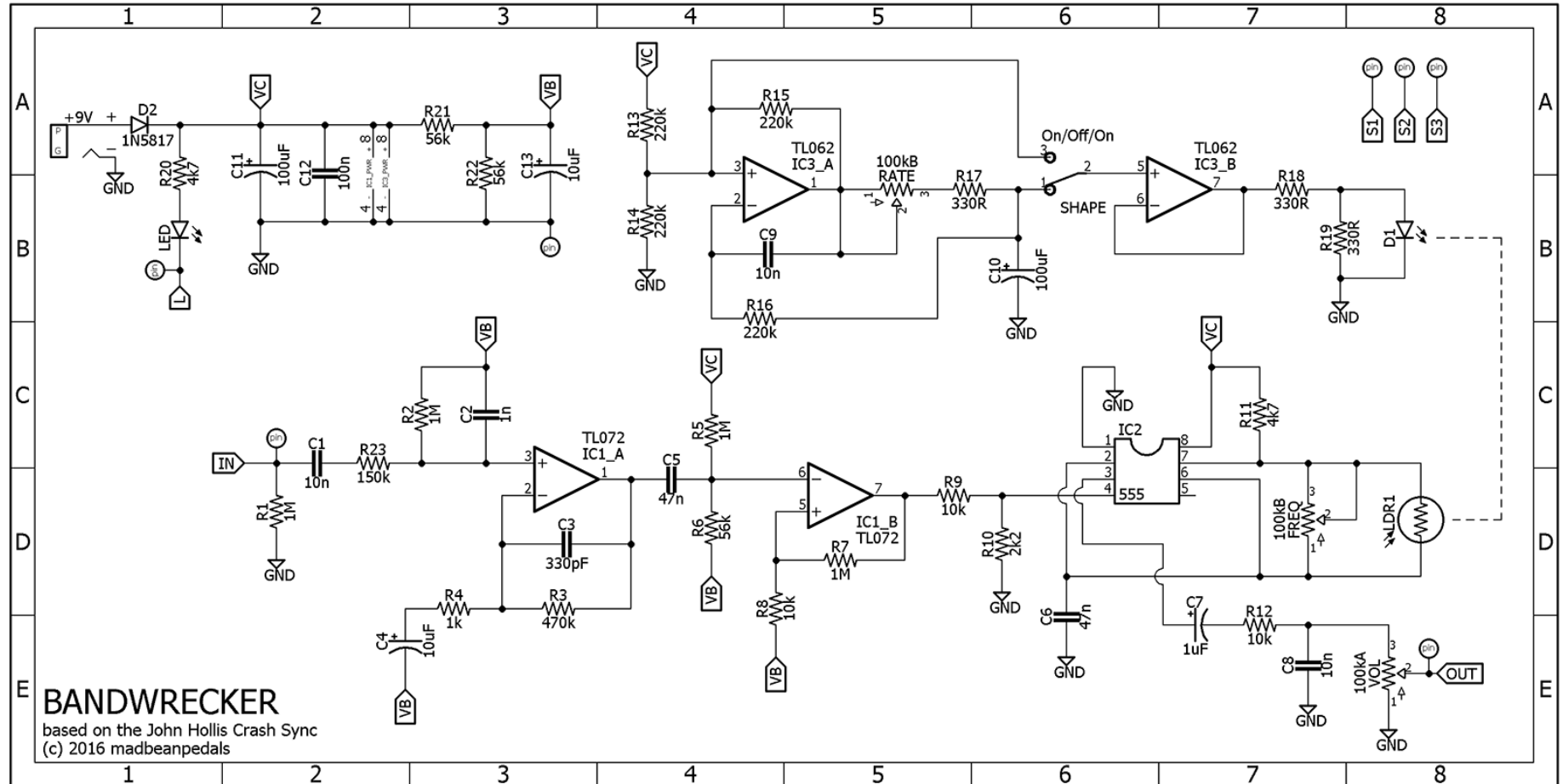
# 1590B Drill Guide

4.43"W x 6.46"H



## Wiring Guide





## Notes

The Bandwrecker is the John Hollis Crash Sync with an added LFO for modulation control. The toggle switch selects between no modulation (stock Crash Sync), and triangle or square wave sweep of the Frequency pot. This LFO implementation is untested but should work. I've suggested the 8002 spec for the photocell based on its low light/dark resistance (8-24k, 500k).