

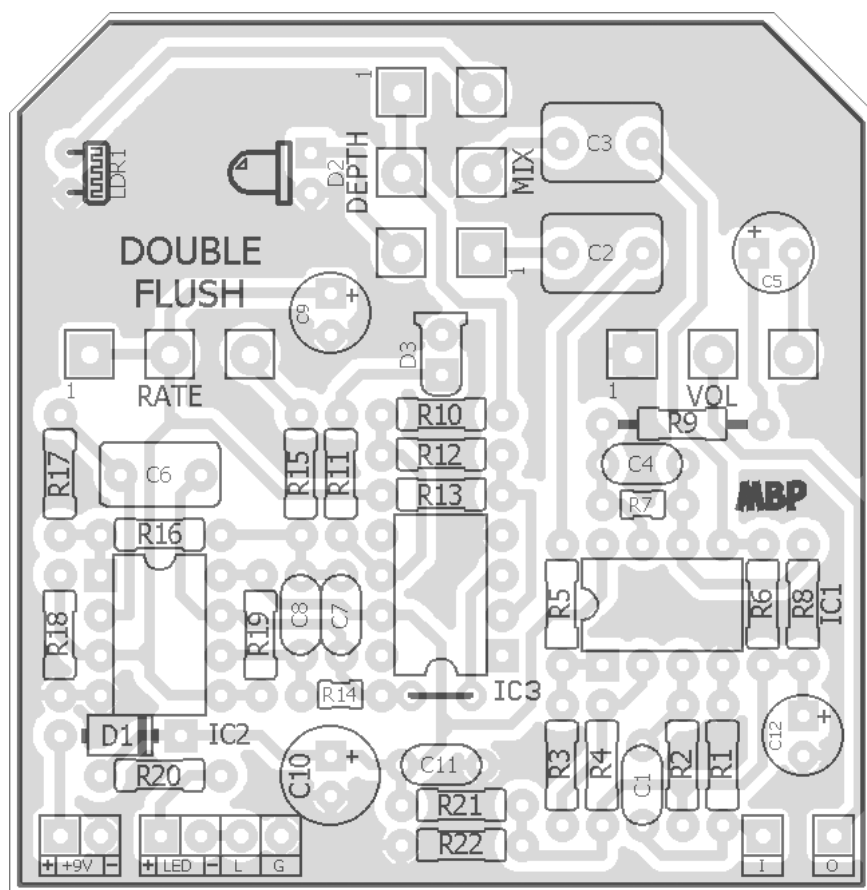
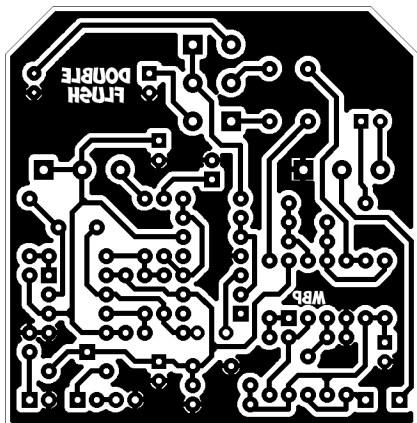
DOUBLE FLUSH

FX TYPE: Tremolo

Based on the Bajaman Tremulator

© 2016 madbeanpedals

2.15" W x 2.22" H



- note the jumper -

Etcher's Paradise projects are intended for DIY use only! Commercial pedal manufacturing using these materials is strictly forbidden.

B.O.M.					
Resistors		Caps		Diodes	
R1	1M	C1	100n	D1	1N5817
R2	470k	C2	1uF	IC's	
R3	10k	C3	1uF	IC1	4558
R4	10k	C4	470pF	IC2	TL062
R5	1k8	C5	4u7	IC3	LF351
R6	470k	C6	330n	Vactrol	
R7	22k	C7	220n	LDR1	
R8	10k	C8	220n	D2	*see notes
R9	470R	C9	4u7	Pots	
R10	470R	C10	100uF	DEPTH	10kB
R11	4k7	C11	100n	RATE	50kB
R12	18k	C12	10uF	VOL	100kA
R13	4k7			MIX	100kC
R14	2M2				
R15	3k3				
R16	3M3				
R17	10M				
R18	100k				
R19	100k				
R20	4k7				
R21	100k				
R22	100k				

Shopping List			
Value	QTY	Type	Rating
470R	2	Metal Carbon Film	1/4W
1k8	1	Metal Carbon Film	1/4W
3k3	1	Metal Carbon Film	1/4W
4k7	3	Metal Carbon Film	1/4W
10k	3	Metal Carbon Film	1/4W
18k	1	Metal Carbon Film	1/4W
22k	1	Metal Carbon Film	1/4W
100k	4	Metal Carbon Film	1/4W
470k	2	Metal Carbon Film	1/4W
1M	1	Metal Carbon Film	1/4W
2M2	1	Metal Carbon Film	1/4W
3M3	1	Metal Carbon Film	1/4W
10M	1	Metal Carbon Film	1/4W
470pF	1	Ceramic	16v min.
100n	2	Film	16v min.
220n	2	Film	16v min.
330n	1	Film	16v min.
1uF	2	Film	16v min.
4u7	2	Electrolytic	16v min.
10uF	1	Electrolytic	16v min.
100uF	1	Electrolytic	16v min.
1N5817	1		
4558	1		
TL062	1		
LF351	1		
10kB	1	PCB Right Angle	16mm
50kB	1	PCB Right Angle	16mm
100kA	1	PCB Right Angle	16mm
100kC	1	PCB Right Angle	16mm

Notes

A variety of photocell/LED combos or photocouplers will work. You can use the VTL5C3 or its Macron equivalent, or roll your own with a photocell and LED (red or white 5mm is fine). The NSL-32 will probably work but I have not tried one in this circuit.

- D3 is an optional Rate indicator. If you don't want to use it omit D3 and R11.
- R15 sets the fastest rate possible. Lower this value for more speed.
- 100kB for the Rate pot will allow for slower tremolo speeds.
- R7 sets the max volume output. Raise this to 33k or 47k for more volume, if needed.

1590B Drill Guide

4.43"W x 6.47"H

