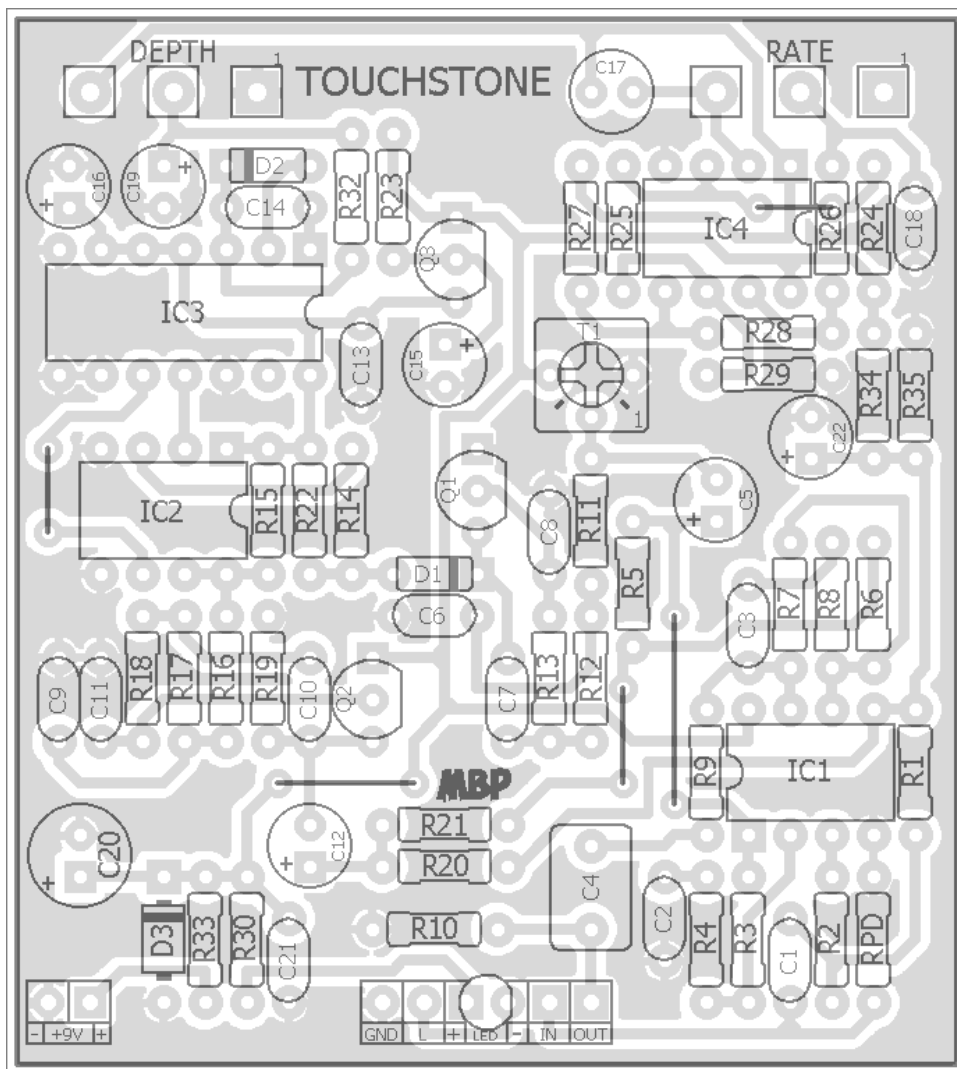


# TOUCHSTONE

**FX TYPE: Modulation**

Based on the EHX® Small Clone™

© 2017 madbeanpedals

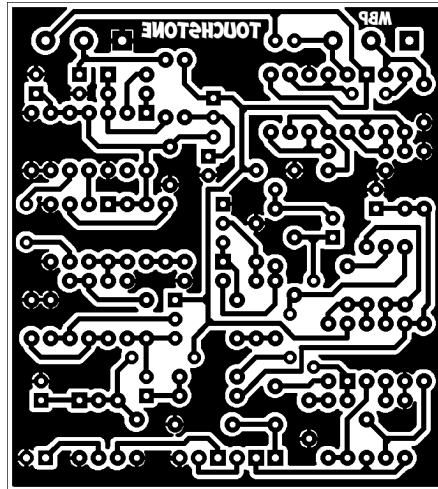


*Note the jumpers*

**Adjust T1 to Bias**

*Etcher's Paradise projects are intended for DIY use only! Commercial pedal manufacturing using these materials is strictly forbidden.*

2.3" W x 2.55" H

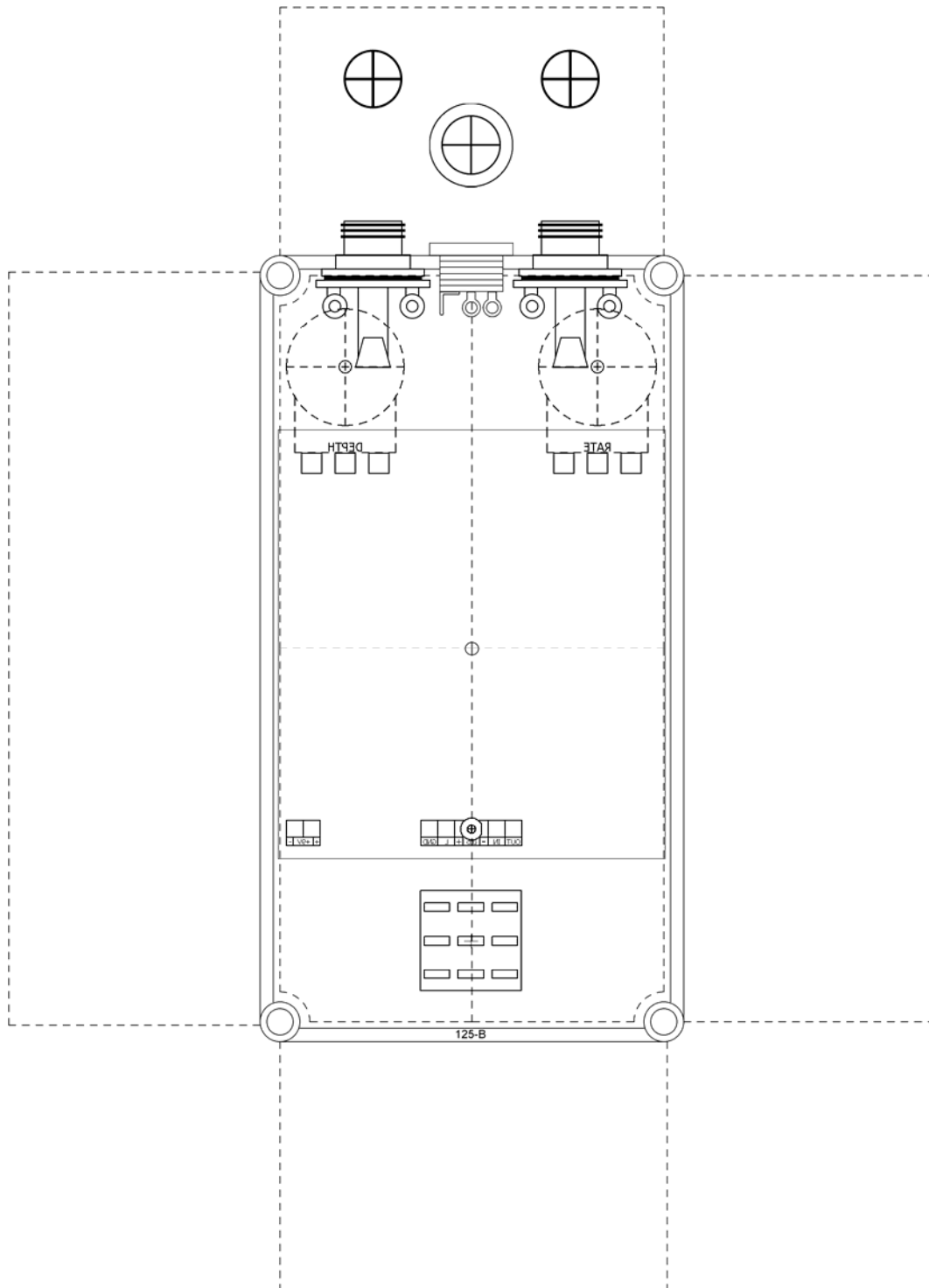


B.O.M.							
Resistors		Resistors		Caps		Diodes	
R1	220k	R23	10k	C1	33n	D1	1n4148
R2	1k	R24	180k	C2	10n	D2	1n4148
R3	33k	R25	68k	C3	10n	D3	1N4001
R4	6k8	R26	47k	C4	1uF	Transistors	
R5	22k	R27	120k	C5	1uF	Q1	2N5087
R6	10k	R28	470k	C6	3n3	Q2	2N5088
R7	33k	R29	82k	C7	15n	Q3	2N5088
R8	6k8	R30	4k7	C8	470pF	IC's	
R9	1k	R32	39k	C9	4n7	IC1	4558
R10	100k	R33	47R	C10	2n7	IC2	MN3007
R11	3k3	R34	56k	C11	180pF	IC3	CD4047BE
R12	10k	R35	56k	C12	1uF	IC4	LM358
R13	10k	RPD	1M	C13	47n	Trimmer	
R14	33k			C14	150pF	T1	100k
R15	39k			C15	10uF	Pots	
R16	10k			C16	10uF	DEPTH	10kB
R17	39k			C17	2u2	RATE	1MC
R18	39k			C18	47n		
R19	10k			C19	10uF		
R20	220k			C20	100uF		
R21	20k			C21	100n		
R22	12k			C22	22uF		

Shopping List			
Value	QTY	Type	Rating
47R	1	Carbon / Metal Film	1/4W
1k	2	Carbon / Metal Film	1/4W
3k3	1	Carbon / Metal Film	1/4W
4k7	1	Carbon / Metal Film	1/4W
6k8	2	Carbon / Metal Film	1/4W
10k	6	Carbon / Metal Film	1/4W
12k	1	Carbon / Metal Film	1/4W
20k	1	Carbon / Metal Film	1/4W
22k	1	Carbon / Metal Film	1/4W
33k	3	Carbon / Metal Film	1/4W
39k	4	Carbon / Metal Film	1/4W
47k	1	Carbon / Metal Film	1/4W
56k	2	Carbon / Metal Film	1/4W
68k	1	Carbon / Metal Film	1/4W
82k	1	Carbon / Metal Film	1/4W
100k	1	Carbon / Metal Film	1/4W
120k	1	Carbon / Metal Film	1/4W
180k	1	Carbon / Metal Film	1/4W
220k	2	Carbon / Metal Film	1/4W
470k	1	Carbon / Metal Film	1/4W
1M	1	Carbon / Metal Film	1/4W
150pF	1	Ceramic / MLCC	16v min.
180pF	1	Ceramic / MLCC	16v min.
470pF	1	Ceramic / MLCC	16v min.
2n7	1	Film	16v min.
3n3	1	Film	16v min.
4n7	1	Film	16v min.
10n	2	Film	16v min.
15n	1	Film	16v min.
33n	1	Film	16v min.
47n	2	Film	16v min.
100n	1	Film	16v min.
1uF	1	Film	16v min.
1uF	2	Electrolytic	16v min.
2u2	1	Electrolytic	16v min.
10uF	3	Electrolytic	16v min.
22uF	1	Electrolytic	16v min.
100uF	1	Electrolytic	16v min.
1n4148	2		
1N4001	1		
2N5087	1		
2N5088	2		
4558	1		
MN3007	1		
CD4047BE	1		
LM358	1		
100k	1	Bourns 3362p	
10kB	1	PCB Right Angle	16mm
1MC	1	PCB Right Angle	16mm

# 125B Drill Guide

5.52"W x 7.64"H



based on the EHX Small Clone (tm)  
(c) madbeanpedals 05.17

