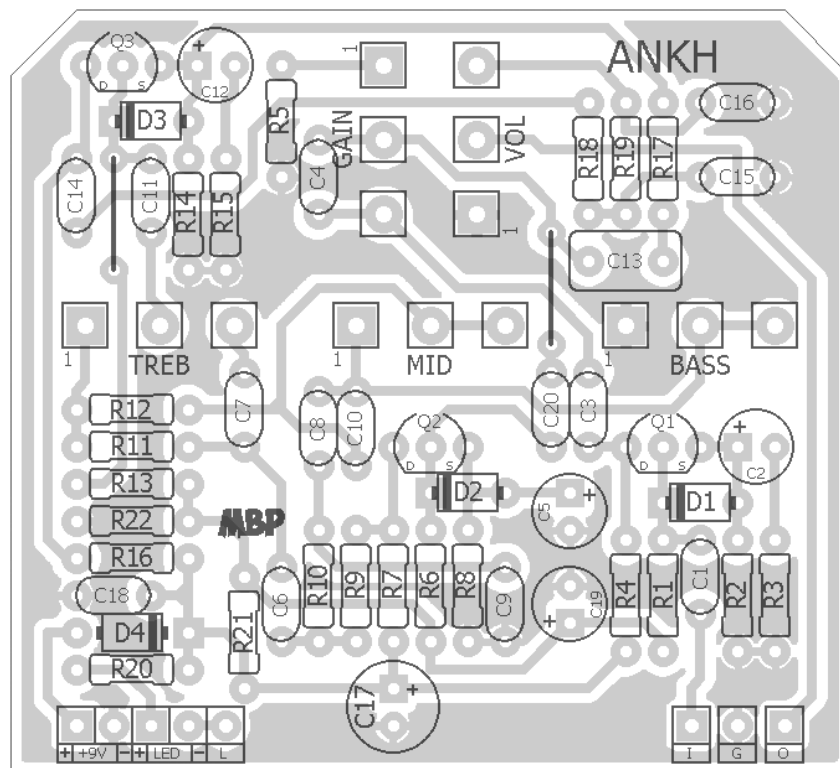
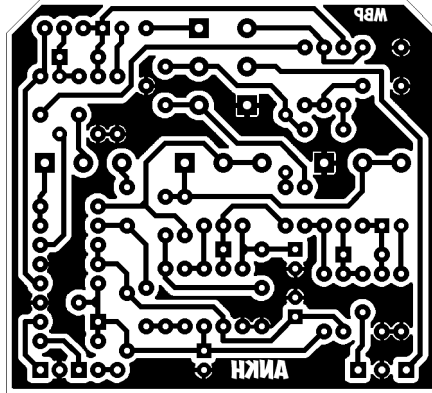


# ANKH

**FX TYPE: Overdrive**  
Based on the Catlinbread® RAH™  
© 2016 madbeanpedals

**2.25" W x 2.05" H**



*1.25.17 update: added C20 (missing 47n cap)*

*Etcher's Paradise projects are intended for DIY use only! Commercial pedal manufacturing using these materials is strictly forbidden.*

B.O.M.					
Resistors		Caps		Diodes	
R1	1M	C1	3n3	D1 - D3	9.1v Zener
R2	3k3	C2	22uF	D4	1N5817
R3	1k	C3	100n	Transistors	
R4	3k3	C4	47pF	Q1 - Q3	BS170
R5	22k	C5	10uF	Pots	
R6	1M	C6	1n	MID	100kB
R7	3k3	C7	220pF	VOL	250kA
R8	3k3	C8	47n	TREB	250kB
R9	100k	C9	47n	BASS	500kA
R10	100k	C10	1n	GAIN	500kB
R11	220k	C11	100n		
R12	22k	C12	22uF		
R13	1M	C13	680n		
R14	3k3	C14	220n		
R15	130R	C15	2n2		
R16	3k3	C16	2n2		
R17	220k	C17	100uF		
R18	10k	C18	100n		
R19	10k	C19	10uF		
R20	4k7	C20	47n		
R21	62k				
R22	100k				

Shoppng List			
Value	QTY	Type	Rating
130R	1	Metal/Carbon Film	1/4W
1k	1	Metal/Carbon Film	1/4W
3k3	6	Metal/Carbon Film	1/4W
4k7	1	Metal/Carbon Film	1/4W
10k	2	Metal/Carbon Film	1/4W
22k	2	Metal/Carbon Film	1/4W
62k	1	Metal/Carbon Film	1/4W
100k	3	Metal/Carbon Film	1/4W
220k	2	Metal/Carbon Film	1/4W
1M	3	Metal/Carbon Film	1/4W
47pF	1	Ceramic	16v min.
220pF	1	Ceramic	16v min.
1n	2	Film	16v min.
2n2	2	Film	16v min.
3n3	1	Film	16v min.
47n	3	Film	16v min.
100n	3	Film	16v min.
220n	1	Film	16v min.
680n	1	Film	16v min.
10uF	2	Electrolytic	16v min.
22uF	2	Electrolytic	16v min.
100uF	1	Electrolytic	16v min.
9.1v Zener	3		
1N5817	1		
BS170	3		
100kB	1	PCB Right Angle	16mm
250kA	1	PCB Right Angle	16mm
250kB	1	PCB Right Angle	16mm
500kA	1	PCB Right Angle	16mm
500kB	1	PCB Right Angle	16mm

# 125B Drill Guide

5.52"W x 7.65"H

