

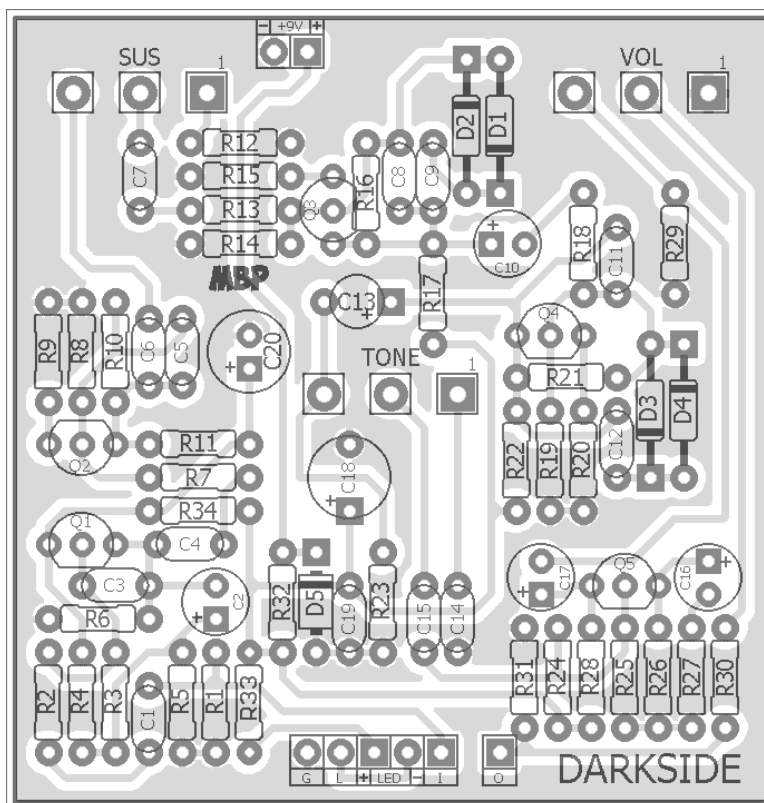
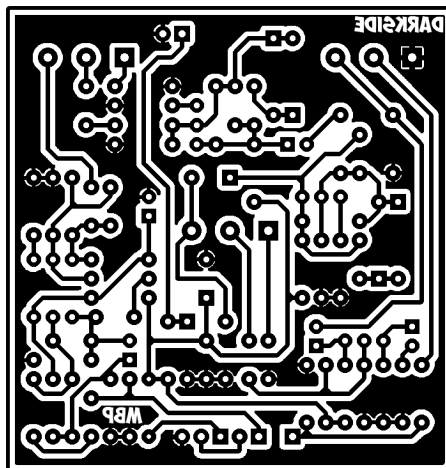
# DARKSIDE

**FX TYPE: Overdrive**

Based on the Cornish G2™

© 2016 madbeanpedals

2.33" W x 2.43" H



Note – This version is true bypass. For buffered bypass, use the Cornholio project posted in the Etcher's Paradise.

*Etcher's Paradise projects are intended for DIY use only! Commercial pedal manufacturing using these materials is strictly forbidden.*

B.O.M.					
Resistors		Caps		Diodes	
R1	1M	C1	220n	D1 - D4	GE
R2	1k	C2	4u7	D5	1N4001
R3	120k	C3	10n	Transistors	
R4	68k	C4	47n	Q1 - Q5	BC549C
R5	150k	C5	1n	Pots	
R6	8k2	C6	47n	SUS	47kA
R7	39k	C7	47n	TONE	25kB
R8	100k	C8	1n	VOL	10kA
R9	680R	C9	220n		
R10	470k	C10	4u7		
R11	15k	C11	1n		
R12	1k	C12	220n		
R13	8k2	C13	4u7		
R14	100k	C14	10n		
R15	680R	C15	220n		
R16	470k	C16	22uF		
R17	15k	C17	22uF		
R18	8k2	C18	220uF		
R19	100k	C19	100n		
R20	100R	C20	100uF		
R21	470k				
R22	15k				
R23	100k				
R24	390k				
R25	100k				
R26	2k2				
R27	620R				
R28	8k2				
R29	39k				
R30	91R				
R31	50k				
R32	100R				
R33	4k7				
R34	120R				

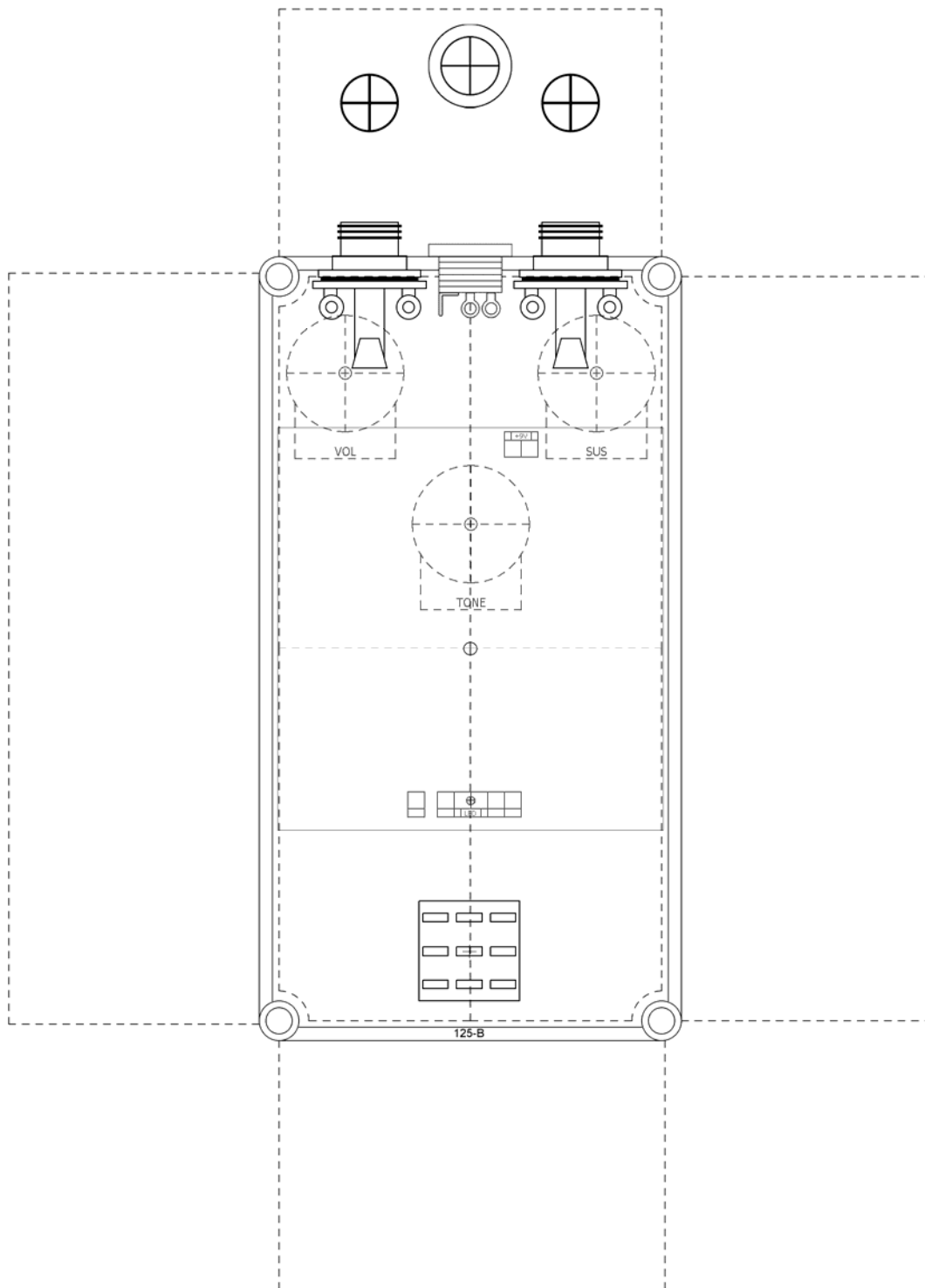
Shopping List			
Value	QTY	Type	Rating
91R	1	Carbon / Metal Film	1/4W
100R	2	Carbon / Metal Film	1/4W
120R	1	Carbon / Metal Film	1/4W
620R	1	Carbon / Metal Film	1/4W
680R	2	Carbon / Metal Film	1/4W
1k	2	Carbon / Metal Film	1/4W
2k2	1	Carbon / Metal Film	1/4W
4k7	1	Carbon / Metal Film	1/4W
8k2	4	Carbon / Metal Film	1/4W
15k	3	Carbon / Metal Film	1/4W
39k	2	Carbon / Metal Film	1/4W
50k	1	Carbon / Metal Film	1/4W
68k	1	Carbon / Metal Film	1/4W
100k	5	Carbon / Metal Film	1/4W
120k	1	Carbon / Metal Film	1/4W
150k	1	Carbon / Metal Film	1/4W
390k	1	Carbon / Metal Film	1/4W
470k	3	Carbon / Metal Film	1/4W
1M	1	Carbon / Metal Film	1/4W
1n	3	Film	16v min.
10n	2	Film	16v min.
47n	3	Film	16v min.
100n	1	Film	16v min.
220n	4	Film	16v min.
4u7	3	Electrolytic	16v min.
22uF	2	Electrolytic	16v min.
100uF	1	Electrolytic	16v min.
220uF	1	Electrolytic	16v min.
GE	4	1n34a, etc.	
1N4001	1		
BC549C	5		
47kA	1	PCB Right Angle	16mm
25kB	1	PCB Right Angle	16mm
10kA	1	PCB Right Angle	16mm

### Subs

91R: 100R  
47kA: 50kA

# 125B Drill Guide

5.52" W x 7.65" H



# DARKSIDE

based on the Cornish G2

(c) 2016 madbeanpedals

