

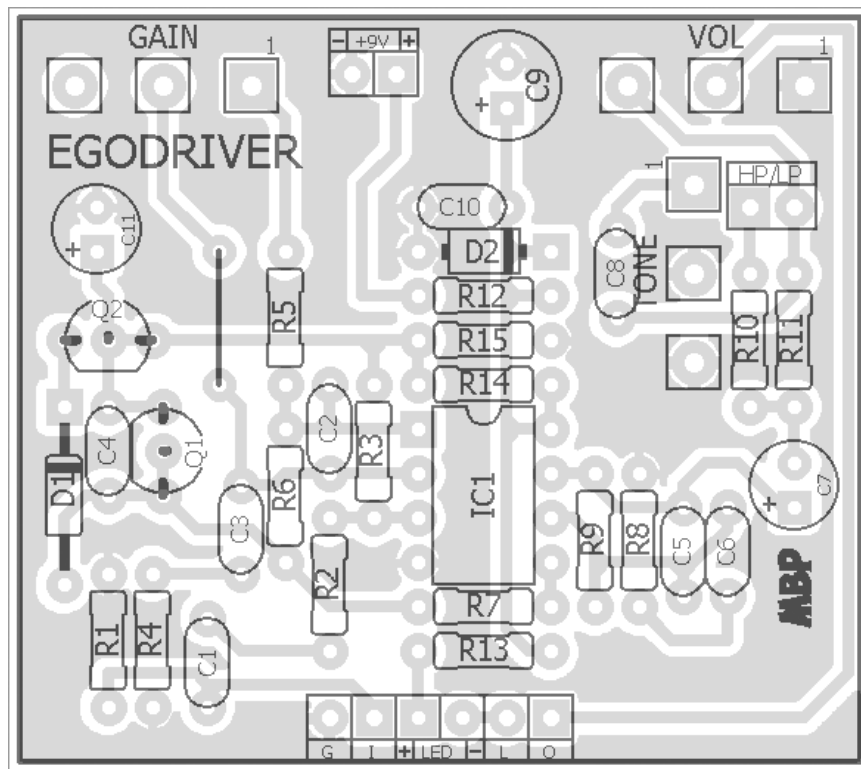
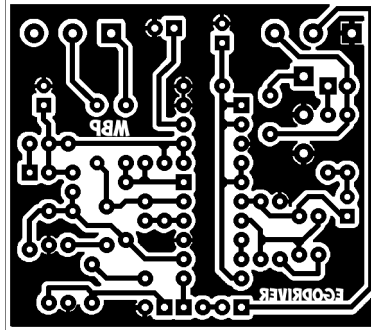
EGODRIVER

FX TYPE: Overdrive

Based on the Fulltone® OCD™

© 2016 madbeanpedals

1.95" W x 1.73" H



Note the jumper

MODS: Change VOL to 100kA for less output/less bass.

Etcher's Paradise projects are intended for DIY use only! Commercial pedal manufacturing using these materials is strictly forbidden.

B.O.M.					
Resistors		Caps		Diodes	
R1	1M	C1	22n	D1	1n34a
R2	10k	C2	220pF	D2	1N4001
R3	470k	C3	68n	Transistors	
R4	2k2	C4	1n	Q1, Q2	2n7000
R5	18k	C5	220pF	IC	
R6	10k	C6	100n	IC1	TL082
R7	10k	C7	10uF	Switch	
R8	39k	C8	47n	HP/LP	SPST
R9	150k	C9	100uF	Pots	
R10	22k	C10	100n	VOL	500kA
R11	33k	C11	47uF	TONE	10kB
R12	100R			GAIN	1MA
R13	4K7				
R14	10k				
R15	10k				

Shopping List				
Value	QTY	Type	Rating	
100R	1	Metal / Carbon Film	1/4W	
2k2	1	Metal / Carbon Film	1/4W	
4K7	1	Metal / Carbon Film	1/4W	
10k	5	Metal / Carbon Film	1/4W	
18k	1	Metal / Carbon Film	1/4W	
22k	1	Metal / Carbon Film	1/4W	
33k	1	Metal / Carbon Film	1/4W	
39k	1	Metal / Carbon Film	1/4W	
150k	1	Metal / Carbon Film	1/4W	
470k	1	Metal / Carbon Film	1/4W	
1M	1	Metal / Carbon Film	1/4W	
220pF	2	Ceramic / MLCC	16v min.	
1n	1	Film	16v min.	
22n	1	Film	16v min.	
47n	1	Film	16v min.	
68n	1	Film	16v min.	
100n	2	Film	16v min.	
10uF	1	Electrolytic	16v min.	
47uF	1	Electrolytic	16v min.	
100uF	1	Electrolytic	16v min.	
1n34a	1			
1N4001	1			
2n7000	2			
TL082	1			
SPST	1	or, SPDT		
500kA	1	PCB Right Angle	16mm	
10kB	1	PCB Right Angle	16mm	
1MA	1	PCB Right Angle	16mm	

1590B Drill Guide

4.43"W x 6.47"H

