

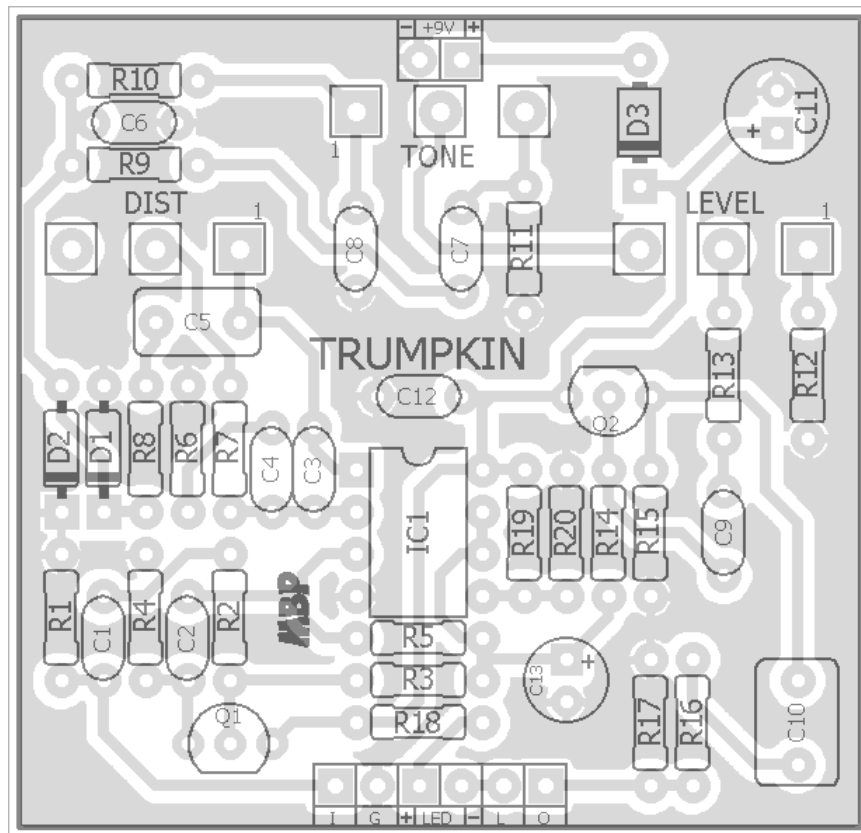
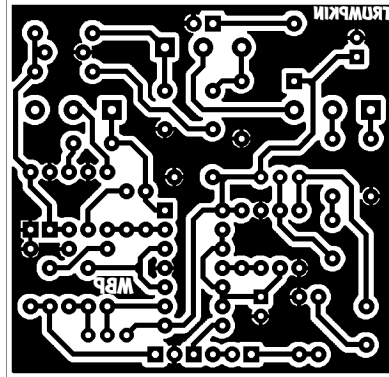
TRUMPKIN

FX TYPE: Distortion

Based on the Ibanez® SD-9™

© 2016 madbeanpedals

2.05" W x 1.98" H



This project is based on Dirk Hendrik's tracing of the SD-9. Other versions may exist. The Trumpkin uses the other half of the 4558 to buffer Vb because there is no reason not to.

Etcher's Paradise projects are intended for DIY use only! Commercial pedal manufacturing using these materials is strictly forbidden.

B.O.M.					
Resistors		Caps		Diodes	
R1	1M	C1	47n	D1	1n914
R2	1k	C2	47n	D2	1n914
R3	510k	C3	1n	D3	1N5817
R4	10k	C4	220n	Transistors	
R5	100k	C5	470n	Q1	2N5088
R6	470R	C6	10n	Q2	2N5088
R7	33k	C7	27n	IC	
R8	2k2	C8	100n	IC1	4558
R9	2k2	C9	100n	Pots	
R10	6k8	C10	1uF	DIST	250kB
R11	6k8	C11	100uF	TONE	20kB
R12	1k	C12	100n	LEVEL	100kB
R13	10k	C13	10uF		
R14	510k				
R15	10k				
R16	470R				
R17	100k				
R18	4k7				
R19	10k				
R20	10k				

Shopping List			
Value	QTY	Type	Rating
470R	2	Metal / Carbon Film	1/4W
1k	2	Metal / Carbon Film	1/4W
2k2	2	Metal / Carbon Film	1/4W
4k7	1	Metal / Carbon Film	1/4W
6k8	2	Metal / Carbon Film	1/4W
10k	5	Metal / Carbon Film	1/4W
33k	1	Metal / Carbon Film	1/4W
100k	2	Metal / Carbon Film	1/4W
510k	2	Metal / Carbon Film	1/4W
1M	1	Metal / Carbon Film	1/4W
1n	1	Film	16v min.
10n	1	Film	16v min.
27n	1	Film	16v min.
47n	2	Film	16v min.
100n	3	Film	16v min.
220n	1	Film	16v min.
470n	1	Film	16v min.
1uF	1	Film	16v min.
10uF	1	Electrolytic	16v min.
100uF	1	Electrolytic	16v min.
1n914	2		
1N5817	1		
2N5088	2	or, 2n3904	
4558	1		
250kB	1	PCB Right Angle	16mm
20kB	1	PCB Right Angle	16mm
100kB	1	PCB Right Angle	16mm

1590B Drill Guide

4.43"W x 6.47"H

