

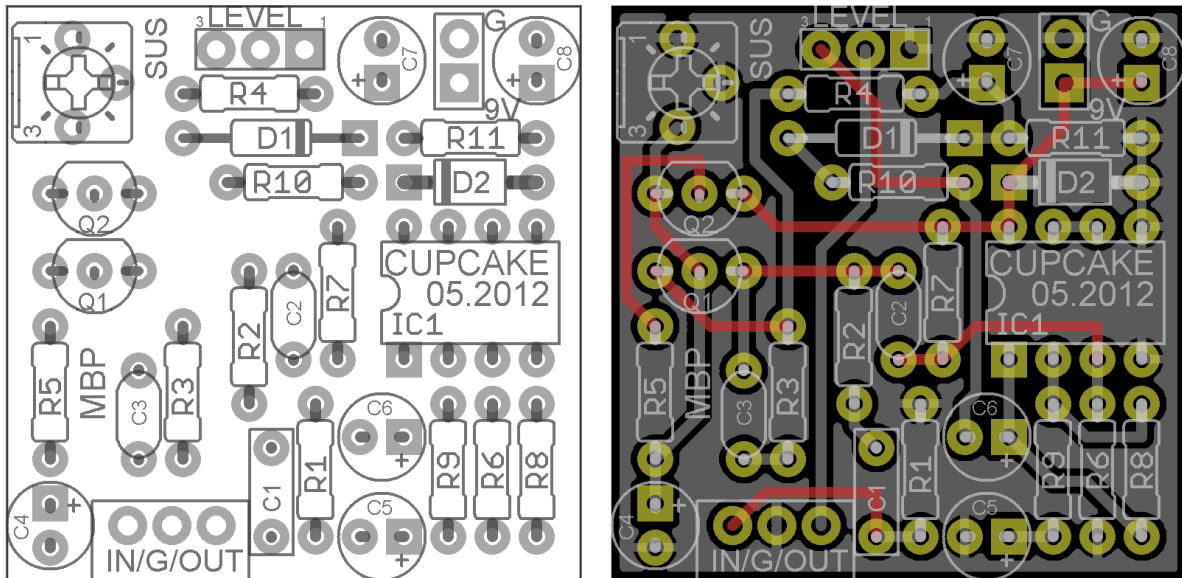
# CUPCAKE

FX Type: Compressor

© 2012

Released: 05.2012

1.3"W x 1.3"H

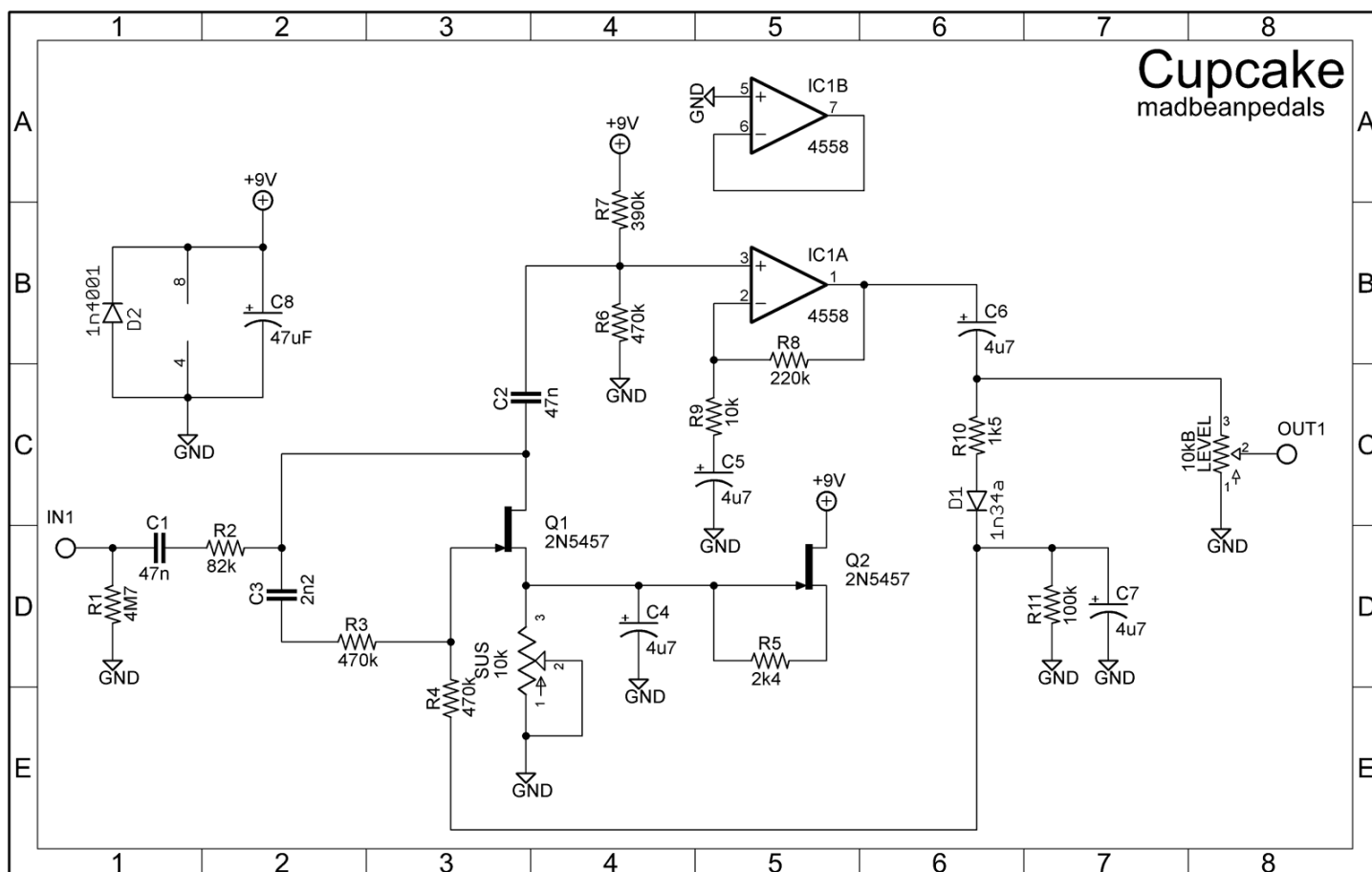


Download the previous version of the Cupcake [here](#).

## Bill of Materials

Resistors		Caps		Diodes	
R1	4M7	C1	47n	D1	1n34a
R2	82k	C2	47n	D2	1n4001
R3	470k	C3	2n2	Transistors	
R4	470k	C4	4u7	Q1, Q2	2N5457
R5	2k4	C5	4u7	IC	
R6	470k	C6	4u7	IC1	JRC4558
R7	390k	C7	4u7	Trimpot	
R8	220k	C8	47uF	SUS	10k
R9	10k			Pot	
R10	1k5			LEVEL	10kB
R11	100k				

## Schematic



## Overview

The **Cupcake** is a clone of the Dan Armstrong “Orange Squeezer”. It is a classic yet very easy to build compressor project suitable for all levels of DIYers. The Cupcake offers a wide range of subtle to squishy compressed tones, an easily identifiable character of its own, and is very inexpensive to build. This version of the PCB is suitable for both 1590A and 1590B builds.

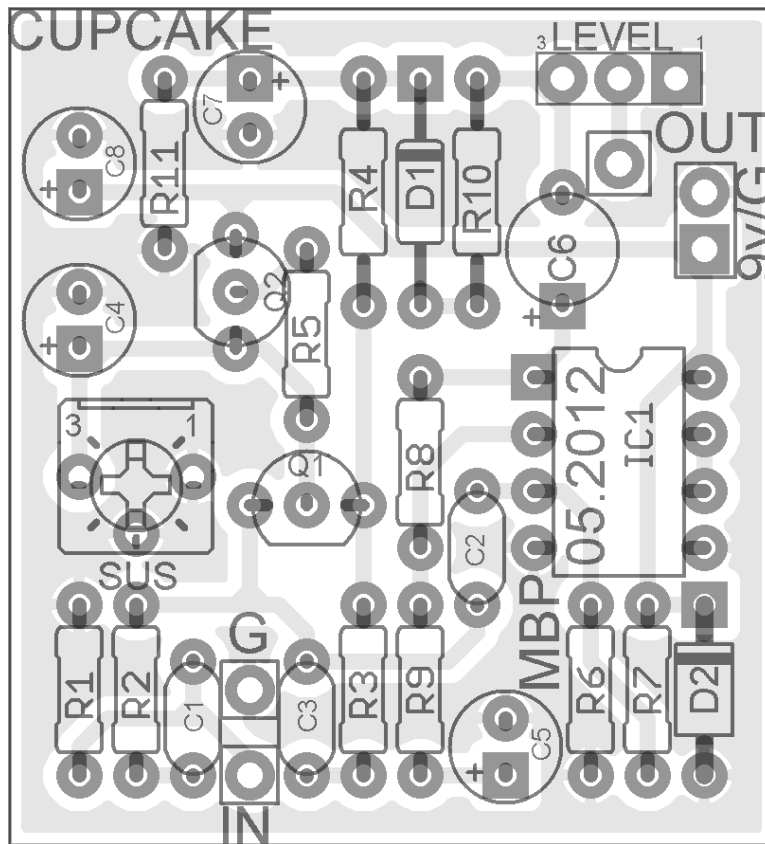
**LEVEL** – Sets the output/compression amount.

## Notes

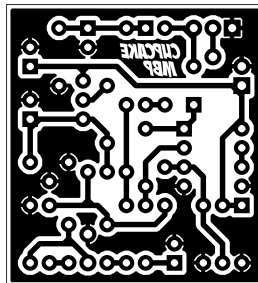
The **SUS** trim pot adjusts the maximum compression allowed. As you turn it up, compression will increase, but so will noise and distortion. Set this trimmer at a point where you feel you get the most compression with the least amount of noise and distortion. You may sub a 10kB pot as an external control, although this may not be terribly useful.

If building the Cupcake for 1590A, please see the [Baby Board Build Guide](#) for tips on which types of parts to use.

## Etching Layout



1.35"W x 1.47"H (inc. borders)



### Licensing

**Cupcake** PCBs purchased from madbeanpedals may be used for limited quantities of commercial pedal building (keep in mind that bulk discounting on PCBs is not offered). You may not, however, offer PCBs for commercial resale (re-distribution) or as part of a "kit". Selling and trading through DIY forums is, as always, completely legit.

[www.madbeanpedals.com](http://www.madbeanpedals.com)

**BUILD.SHARE.LEARN**