

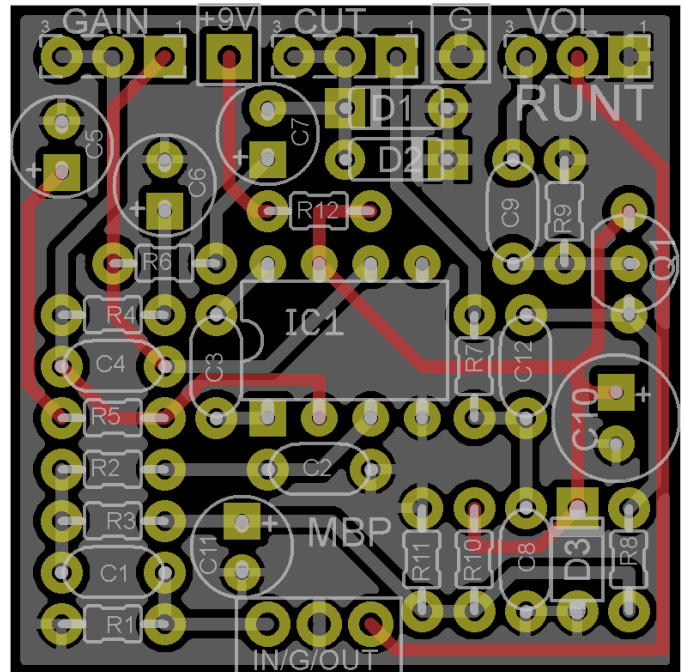
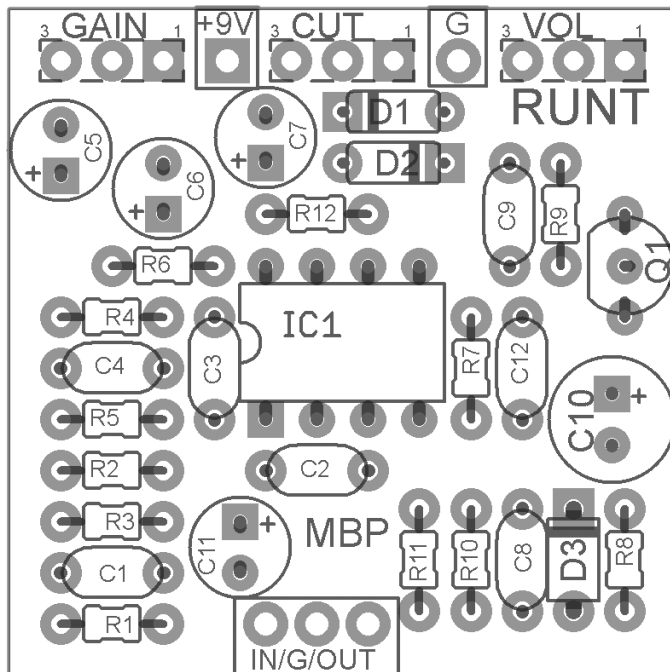
RUNT DISTORTION

Baby Board / 1590A project

© 2012 [madbeanpedals](http://madbeanpedals.com)

Updated 03.28 – Correction made to the placement of R8

1.3"W x 1.3"H



Resistors		Caps		Diodes	
R1	1M	C1	22n	D1, D2	1n914
R2	1k	C2	1n	D3	1N4001
R3	1M	C3	30pF	IC	
R4	47R	C4	100pF	IC1	LM308
R5	560R	C5	4u7	Transistors	
R6	1k	C6	2u2	Q1	2N5457
R7	1k5	C7	4u7	Pots	
R8	1M	C8	3n3	VOL	100kA
R9	10k	C9	1uf	CUT	100kA
R10	100k	C10	100uF	GAIN	100kA
R11	100k	C11	47uF		
R12	47R	C12	22n		

The **Runt** is based directly on the classic Rat TM distortion.

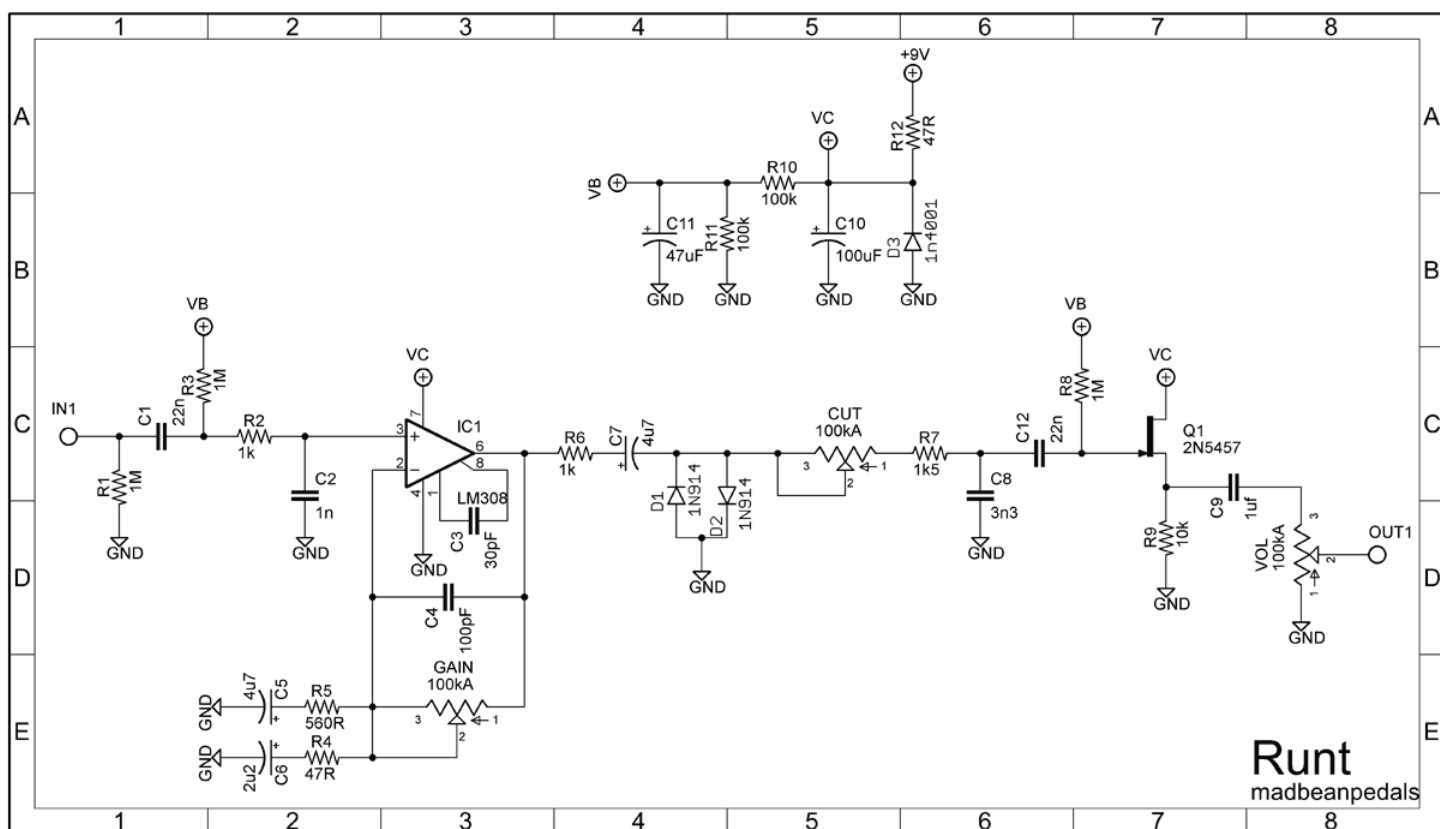
Gain – Sets the total amount of distortion

Cut – Decreases the treble content as the control is turned clockwise

Vol – Sets the output volume

Notes

You can use LEDs in place of **D1** and **D2** for a louder, more aggressive type of distortion. 3MM Red Diffused is recommended.



Baby Board Licensing

Baby Board PCBs purchased from madbeanpedals may be used for small quantities of commercial pedal building (keep in mind that bulk discounting on PCBs is not offered). You may not, however, offer Baby Board PCBs for commercial resale (re-distribution) or as part of a "kit". Selling and trading through DIY forums is, as always, completely legit.

www.madbeanpedals.com

BUILD.SHARE.LEARN