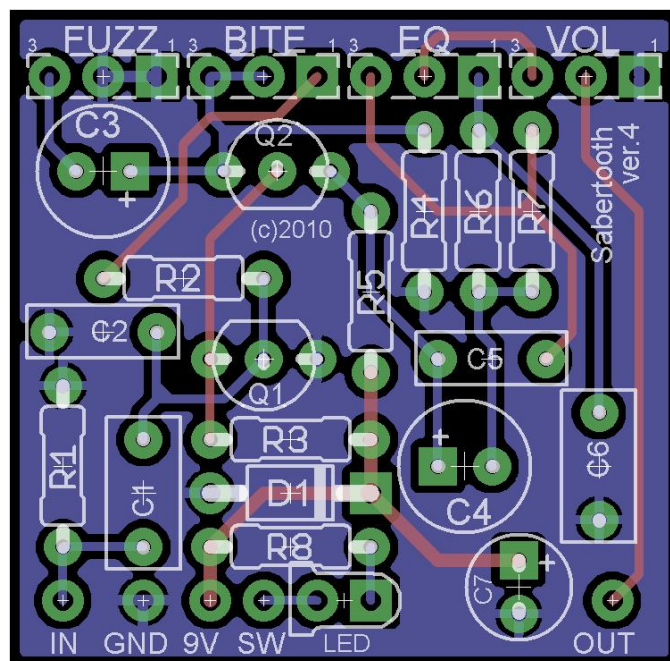


MADBEANPEDALS PRESENTS

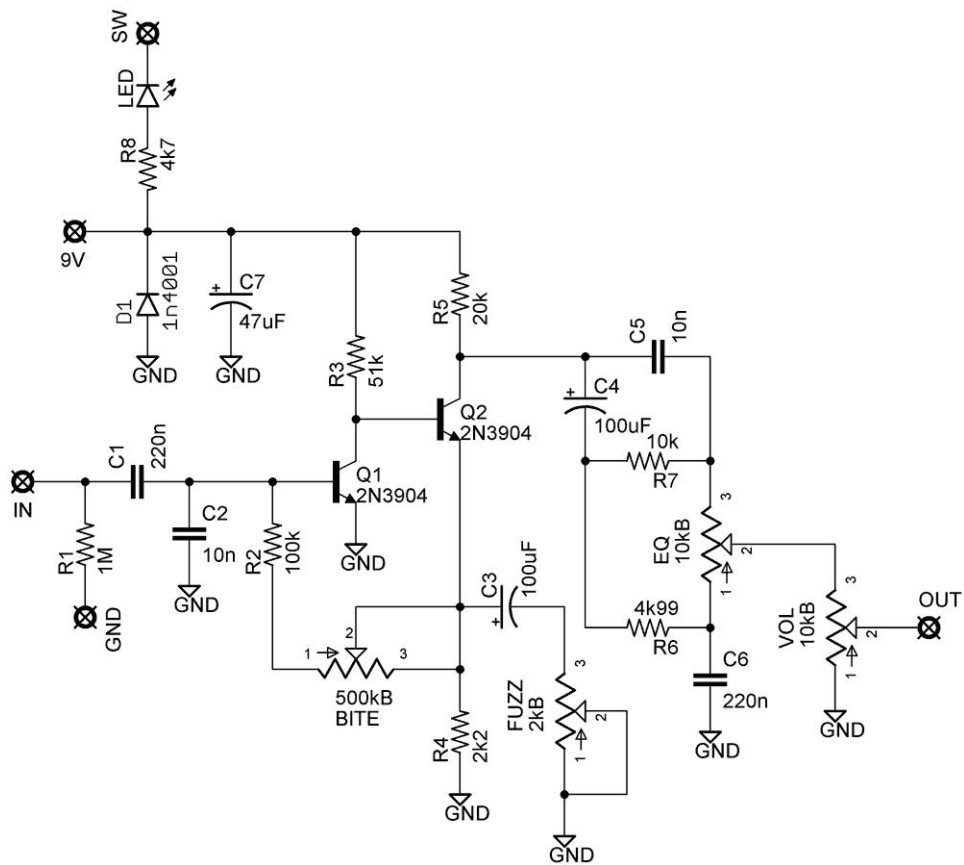
SABERTOOTH

PCB artwork ©2010 madbeanpedals

Ver.4 09.10.10



Resistors		Caps		Diodes	
R1	1M	C1	220n	D1	1n4001
R2	100k	C2	10n	Transistors	
R3	51k	C3	100uF		
R4	2k2	C4	100uF	Q1, Q2	2N3904
R5	20k	C5	10n	Pots	
R6	4k99	C6	220n		
R7	10k	C7	47uF		
R8	4k7				
				BITE	500kB
				EQ	10kB
				FUZZ	2kB
				VOL	10kB



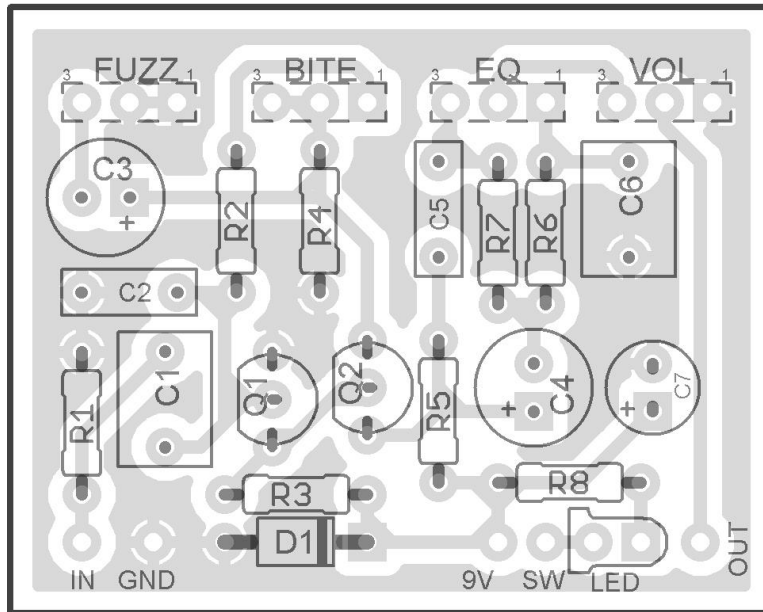
Notes

- You can sub a 5k1 for R6 without any significant change in tone.

Parts

- Xicon General or Hi-Temp radial electrolytic caps, 25v
- Xicon carbon metal film resistors, $\frac{1}{4}W$
- Panasonic ECQ-V or WIMA box caps, 25v or above
- Alpha 16mm or 24mm potentiometers

SINGLE SIDED VERSION – FOR ETCHING



1.617" x1.292" (w / borders)

