

SPROUT

FX TYPE: FUZZ

Based on the Colorsound® One-Knob Fuzz™

PCB artwork ©2011 madbeanpedals

Release date: 01.23.11

The **Sprout** is a simple, no frills, one-knob fuzz machine. It has only one control for volume. The layout has been shrunk so that it can be mounted in a 1590A enclosure for maxim space saving. You can also use a short pin PCB-mounted pot underneath the board, if desired.

The controls are as follows

VOL: The output level.

SmallBear Parts Guide – www.smallbearelec.com

- Panasonic ECQ-B / V film caps or Topmay box caps
- Carbon film Resistors 1/4W and/or metal film resistors 1/4W
- 16v electrolytic radial caps
- Ceramic caps (for pF values)
- 16mm Alpha Pots

Notes

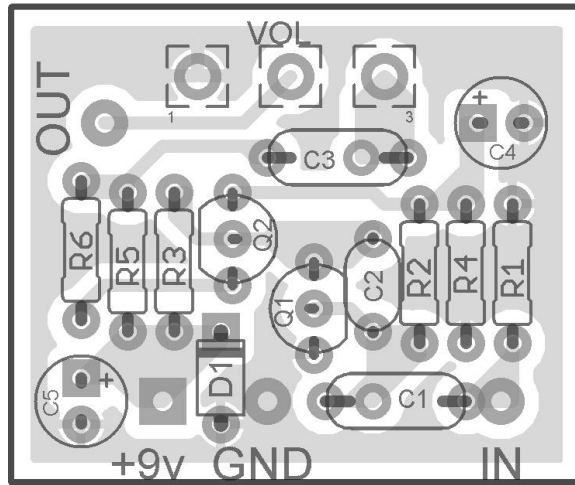
The stock unit lists BC108 for **Q1** and BC109 for **Q2**. Other transistors will work. Suggestions are 2n3904 or 2n3565. In my personal build, I used a 2n3904 for **Q1** and BC109 for **Q2**.

If you plan on putting the **Sprout** in a 1590B enclosure, you can use a short pin PCB-mounted pot soldered directly to the underside of the board:

<http://www.smallbearelec.com/Detail.bok?no=692>

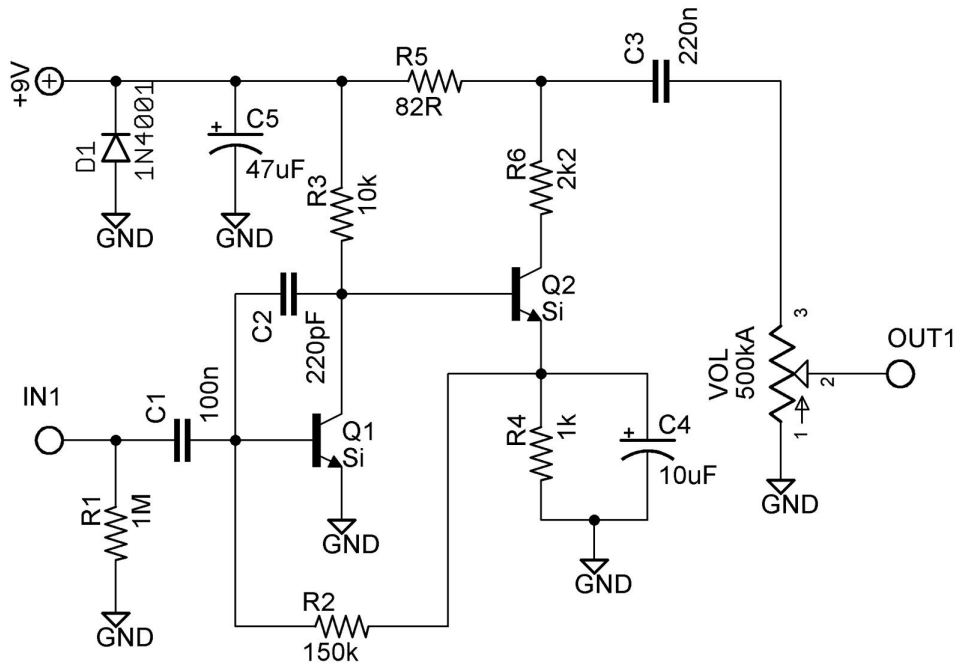
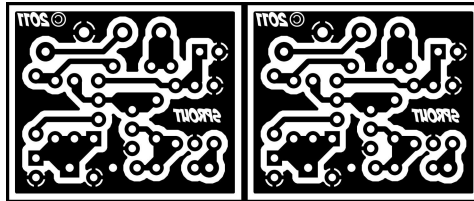
If you are using a 1590A, you might want to use a wired 9mm Alpha pot instead to allow more height for components: <http://www.smallbearelec.com/Detail.bok?no=693>

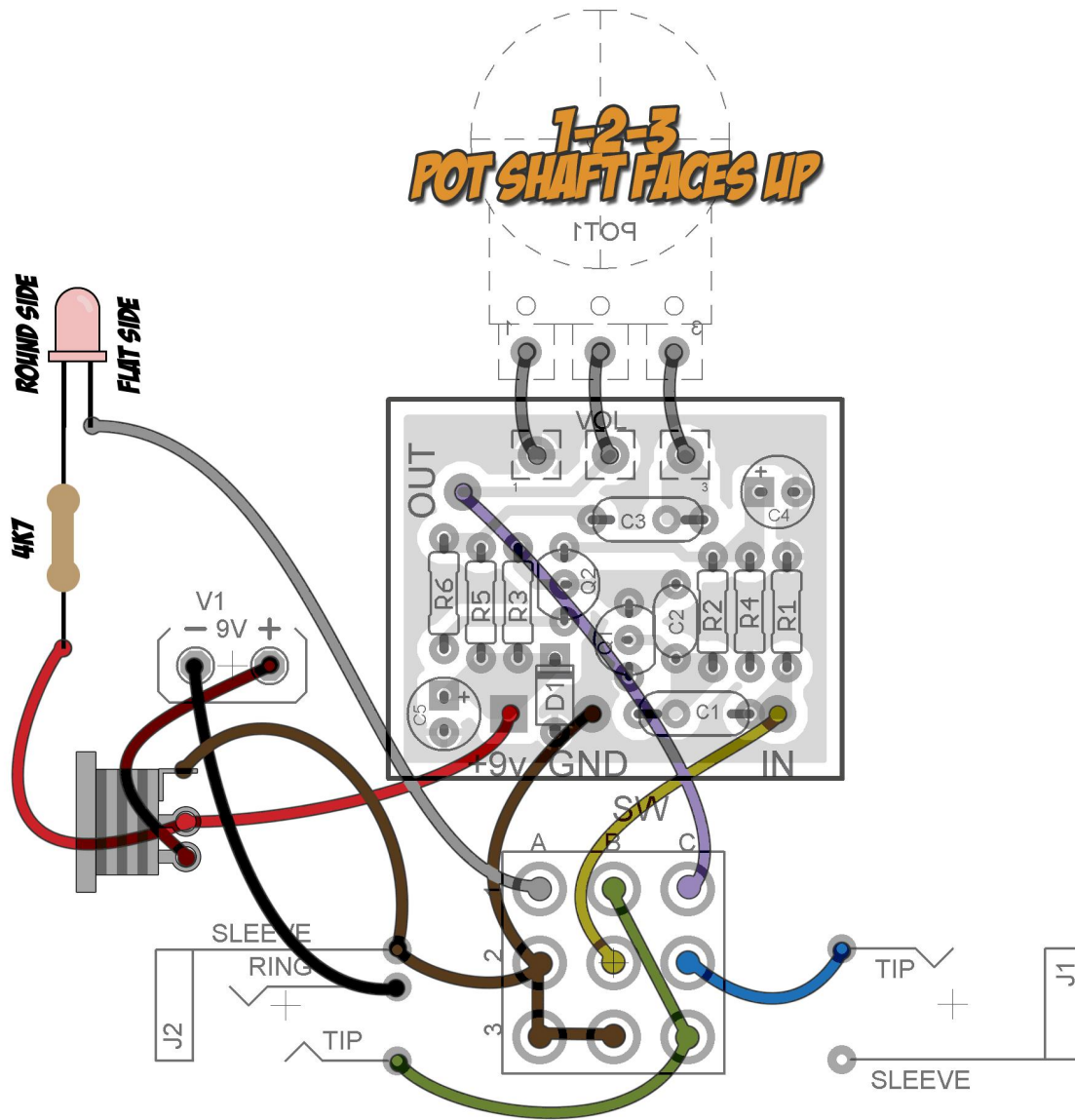
Note the extra pads underneath **C1** and **C3**. This allows you to use either 5mm or 7mm lead-spaced capacitors.



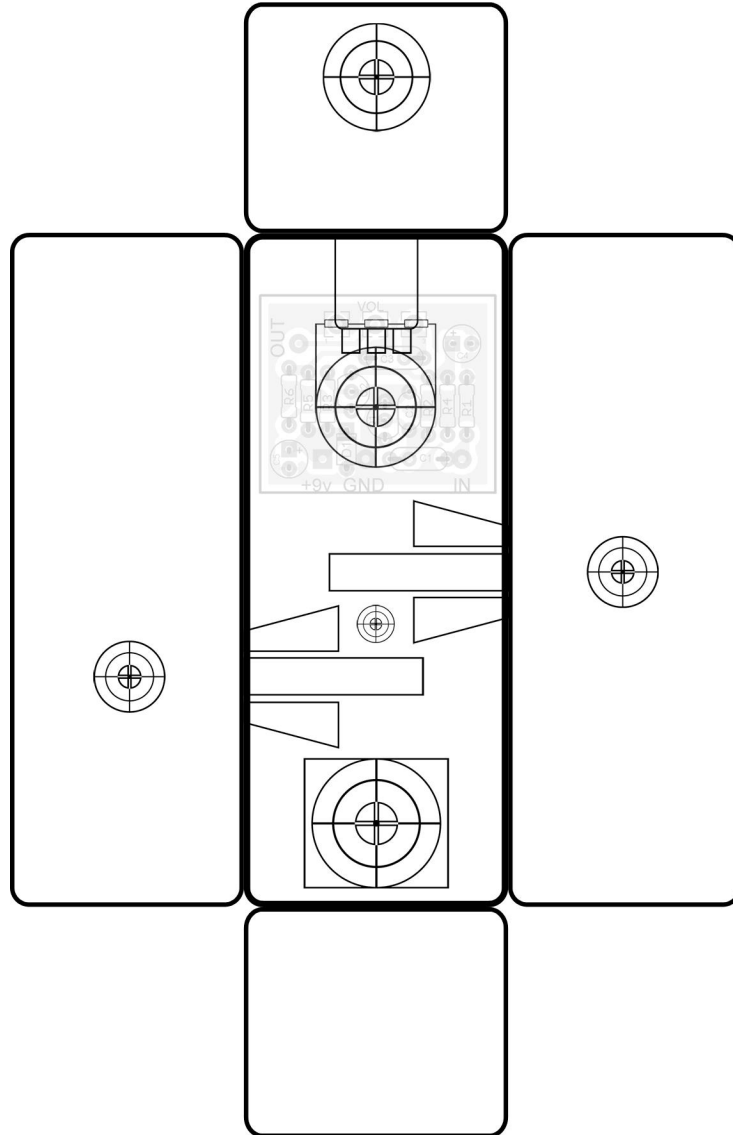
Resistors		Caps		Diodes	
R1	1M	C1	100n	D1	1N4001
R2	150k	C2	220pF	Transistors	
R3	10k	C3	220n	Q1, Q2	Si
R4	1k	C4	10uF	Pots	
R5	82R	C5	47uF	VOL	500kA

1.23" W x 1.04" H (including borders)

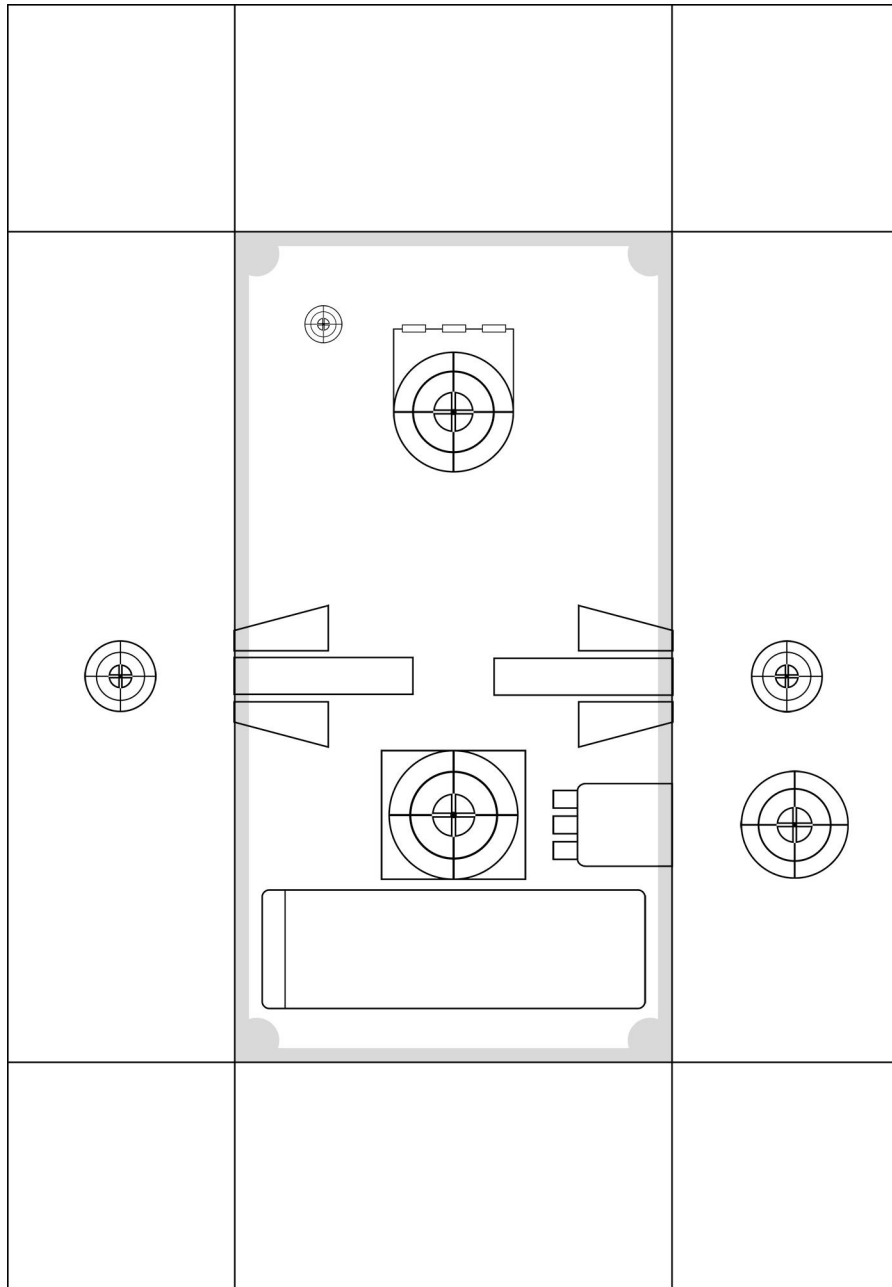




1590A Layout
3.82" W x 5.9" H



1590B Layout
4.64" W x 6.69" H



This product is intended for DIY use only. Commercial use, including the sale of PCBs, kits or pedals utilizing this information, is strictly prohibited.