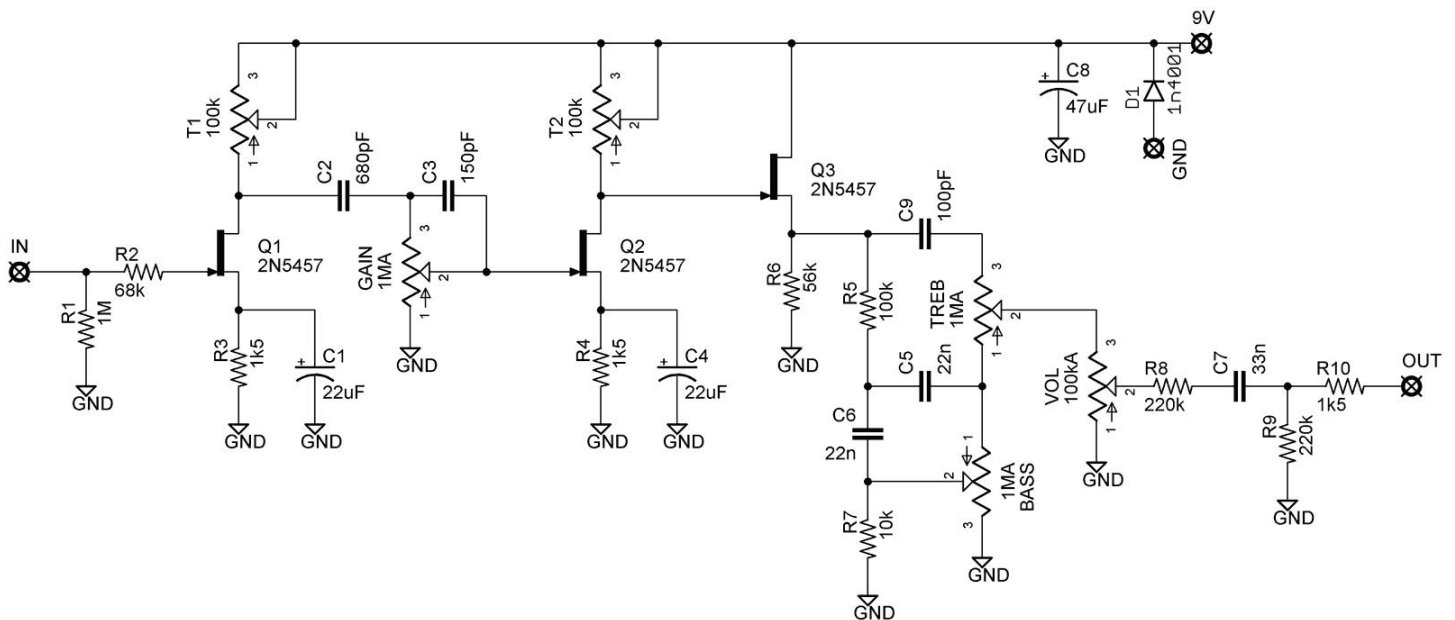
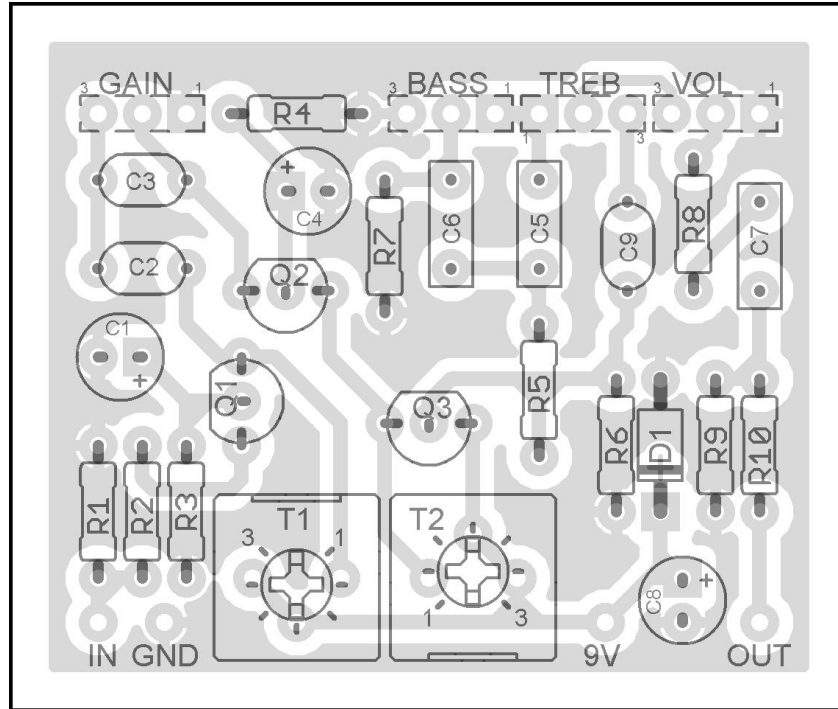


DINKY DRIVE

(Based on Bad Cat Mini II amplifier)

PCB Artwork ©2010 madbeanpedals

brian@madbeanpedals.com



Part	Value
R1	1M
R2	68k
R3	1k5
R4	1k5
R5	100k
R6	56k
R7	10k
R8	220k
R9	220k
R10	1k5
C1	22uF
C2	680pF
C3	150pF
C4	22uF
C5	22n
C6	22n
C7	33n
C8	47uF
C9	100pF
D1	1n4001
Q1 - Q3	2N5457
T1	100k
T2	100k
TREB	1MA
VOL	100kA
BASS	1MA
GAIN	1MA

The **Dinky Drive** is a straight port of the Bad Cat Mini II amplifier to a jFet-type design, similar to the English Channel (AC30 Top Boost) from RunOffGroove. If you have built the English Channel, the Dinky Drive is basically the first half of the pedal with a couple of changed values. There is a fair amount of overdrive on tap, not too fizzy and a nice balance for rhythm and light lead playing.

Notes

- Adjust **T1** and **T2** until you get ~4.5v on the drain of Q1 and Q2.
- You can sub 50k for **T1** and **T2** most likely.
- **Q1 – Q3** can also be J201, or you could try mixing and matching with 2N5457.

1.815"W x 1.54" H

