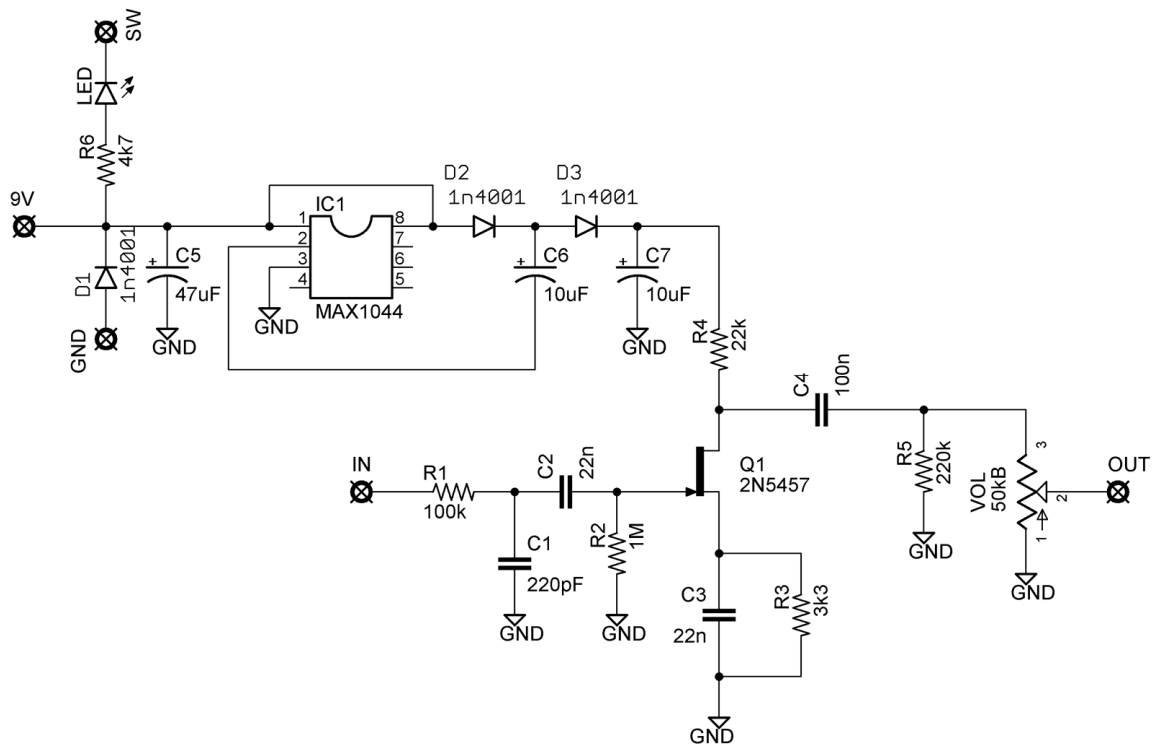
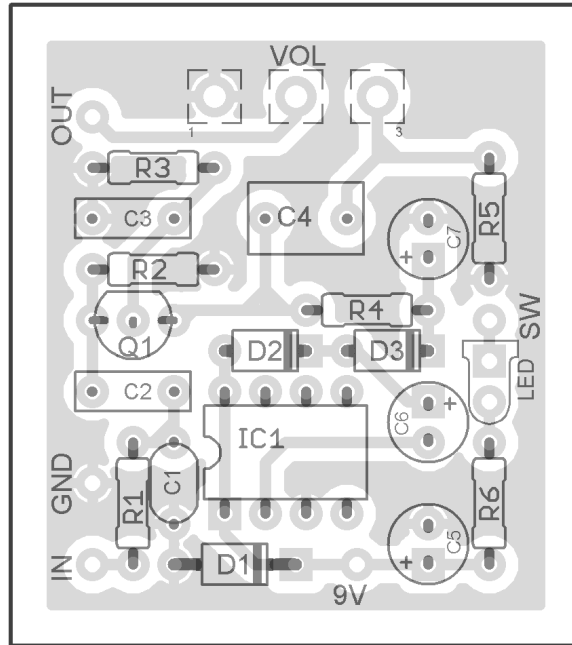


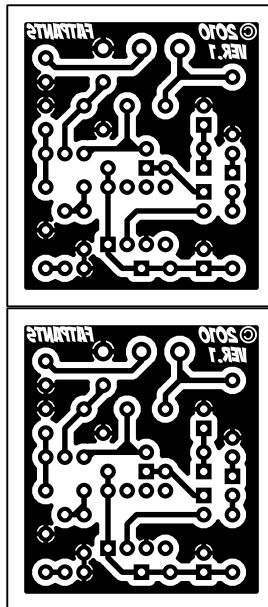
# FATPANTS

(Based on the Echoplex input preamp)  
PCB artwork ©2010 madbeanpedals

Ver. 1 04.18.10



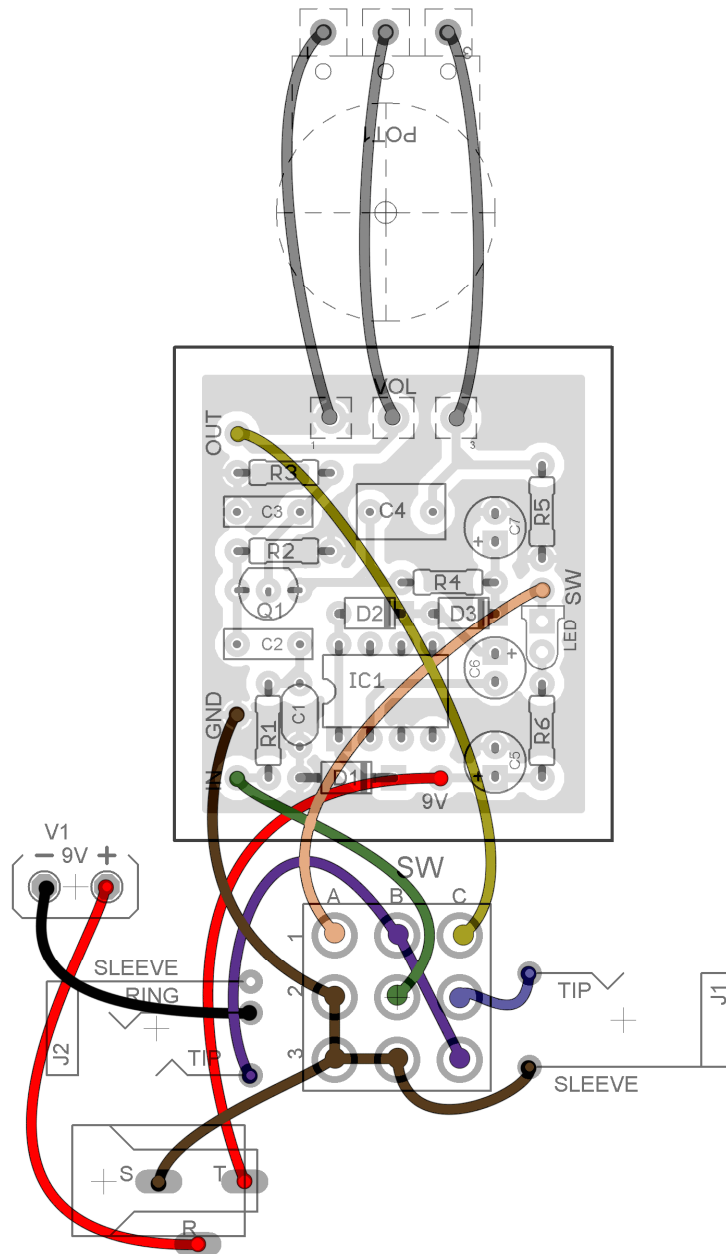
R1	100k
R2	1M
R3	3k3
R4	22k
R5	220k
R6	4k7
C1	220pF
C2	22n
C3	22n
C4	100n
C5	47uF
C6	10uF
C7	10uF
IC1	MAX1044
D1 - D3	1n4001
Q1	2N5457
VOL	50kB



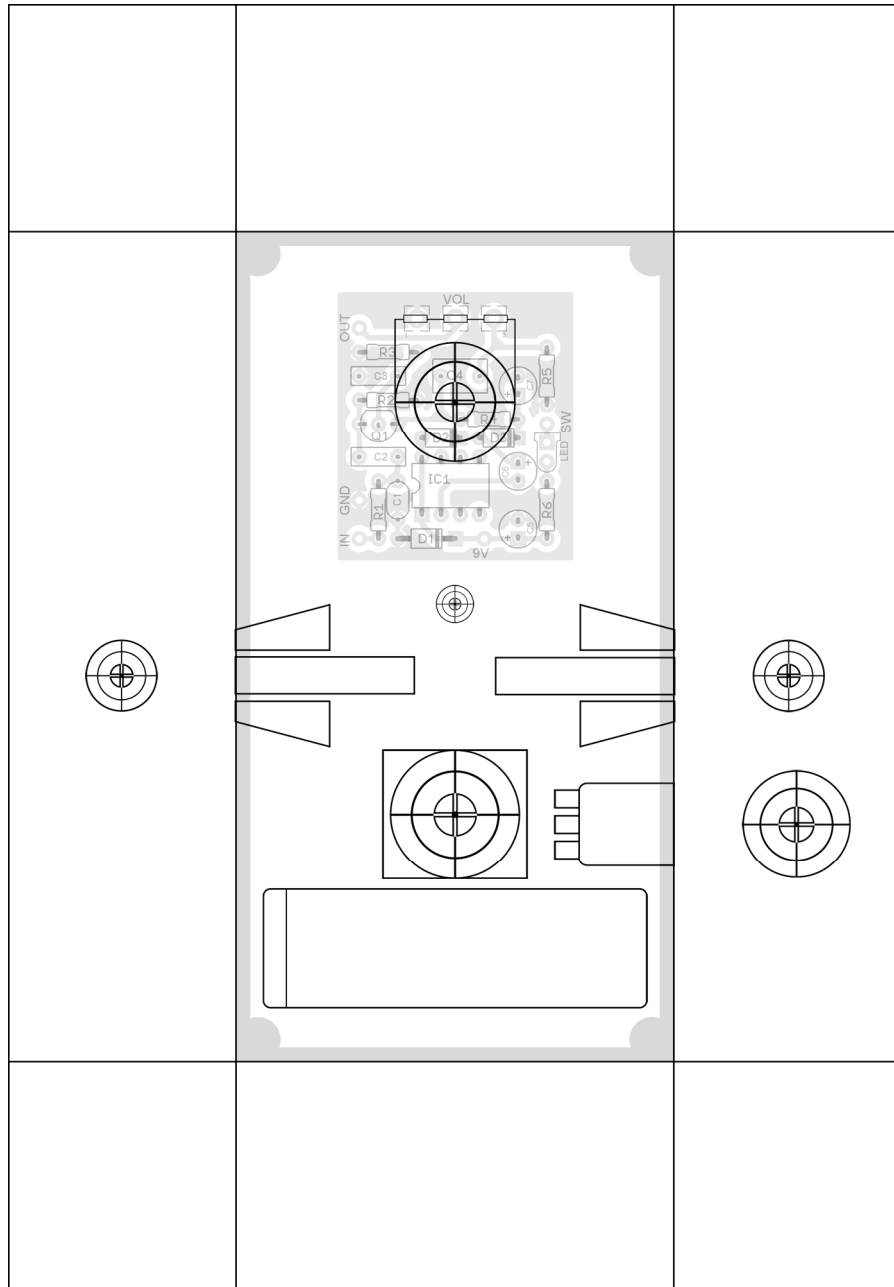
The **FatPants** is based on the input section of the Echoplex EP-3. It has been recently popularized by the [ClinchFX EP-PRE](#) and the [Xotic EP-booster](#).

The circuit is extremely simple: a jFet preamp with minimal tone shaping and powered at slightly under 18v. Tone-wise, the **FatPants** will add depth and richness to your guitar tone, with a little grit. These are just the right features for a simple guitar booster.

You can sub the TC1044 (less expensive) for the MAX1044. An added benefit is that the TC1044 will accept 12v input, if you want to try boosting the voltage up even more. Take care that your caps are rated accordingly. Also, you can play around with different values for **C3** and **R3** for different textures and levels of grittiness. Or, you can sub a pot for **R3** if you want an external control for gain. The board is drilled to fit a 16mm PCB mounted pot, if you prefer.



## 1590B/1290NS Enclosure



*This drilling template is provided "as is". Use at your own risk!*