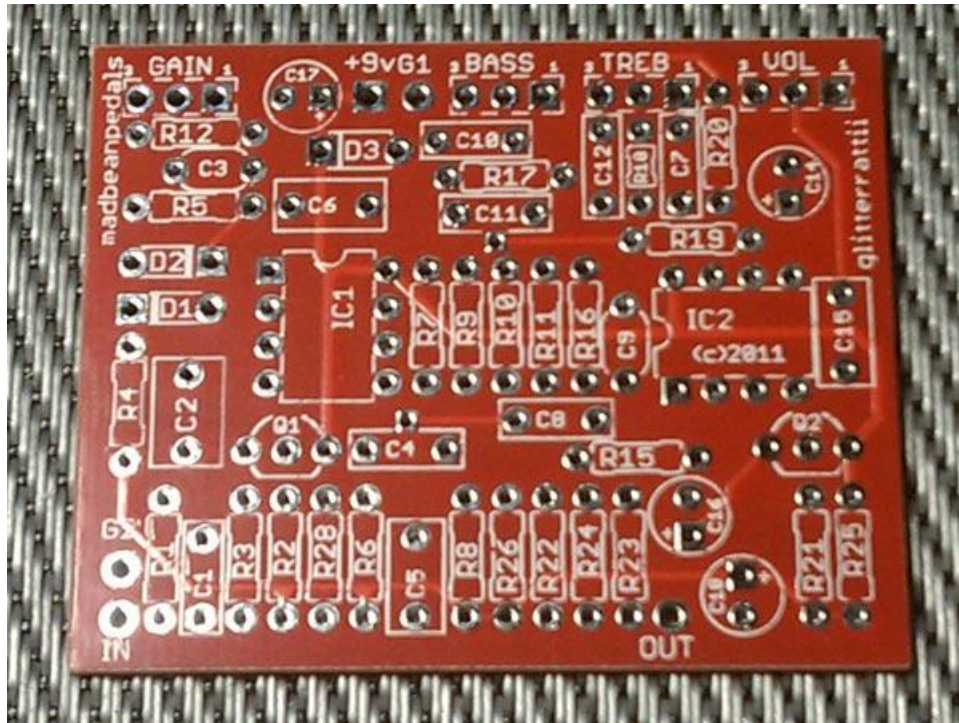


GLITTERATTI



FX TYPE: OVERDRIVE

Based on the Xotic® BB Preamp™

PCB artwork ©2011 madbeanpedals

Release date: 04.03.11

The controls are as follows

GAIN: The total amount of overdrive.

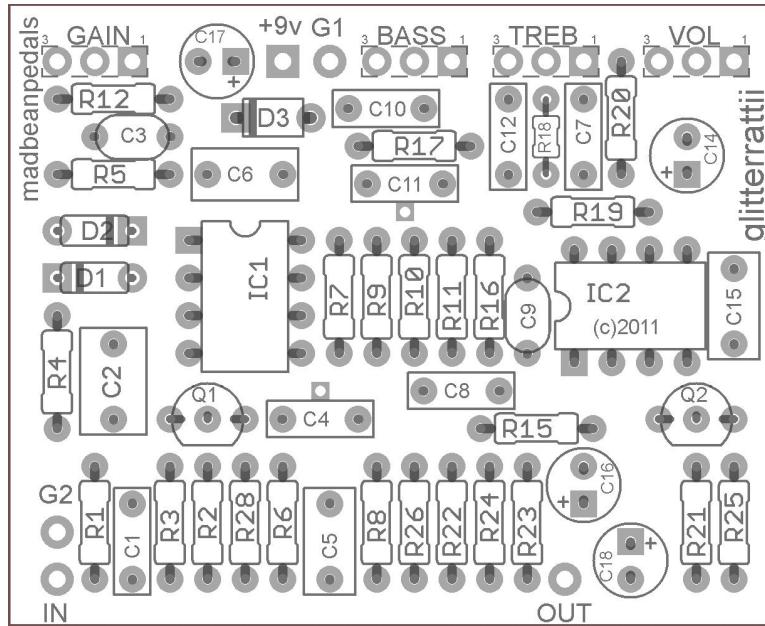
BASS, TREBLE: These active tone controls can cut or boost the bass and treble frequencies of the overdrive. These tone controls are one variation of the [Baxandall](#) active tone stack.

VOL: The total output.

Notes

- There are many different op-amps you can use in this circuit. For **IC1**, try the 4558, 4580, TCL2272, JRC4557, LF353, OPA2604 or the OPA2134. **IC2** should be a low noise amp such as the TL072.
- To make the Glitteratti more bass-friendly, try the following: increase C1 to 220n, C10 and C11 to 68n and C7, C12 to 10n.

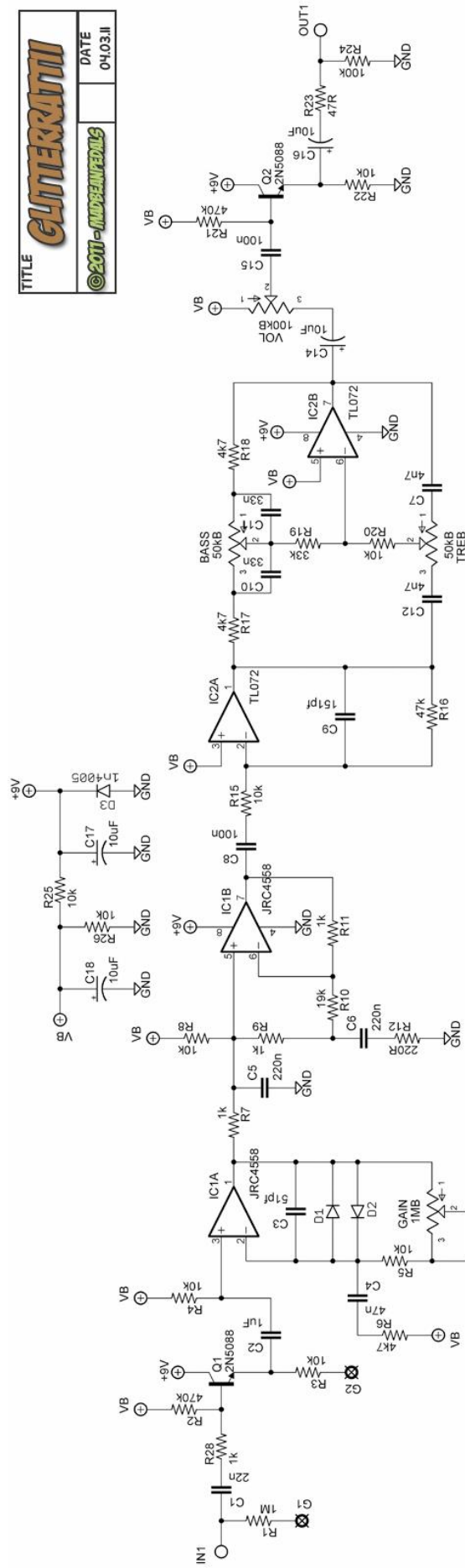
MANUFACTURED VERSION



2.05"W x 1.65"H
This version will fit in a 1590B.

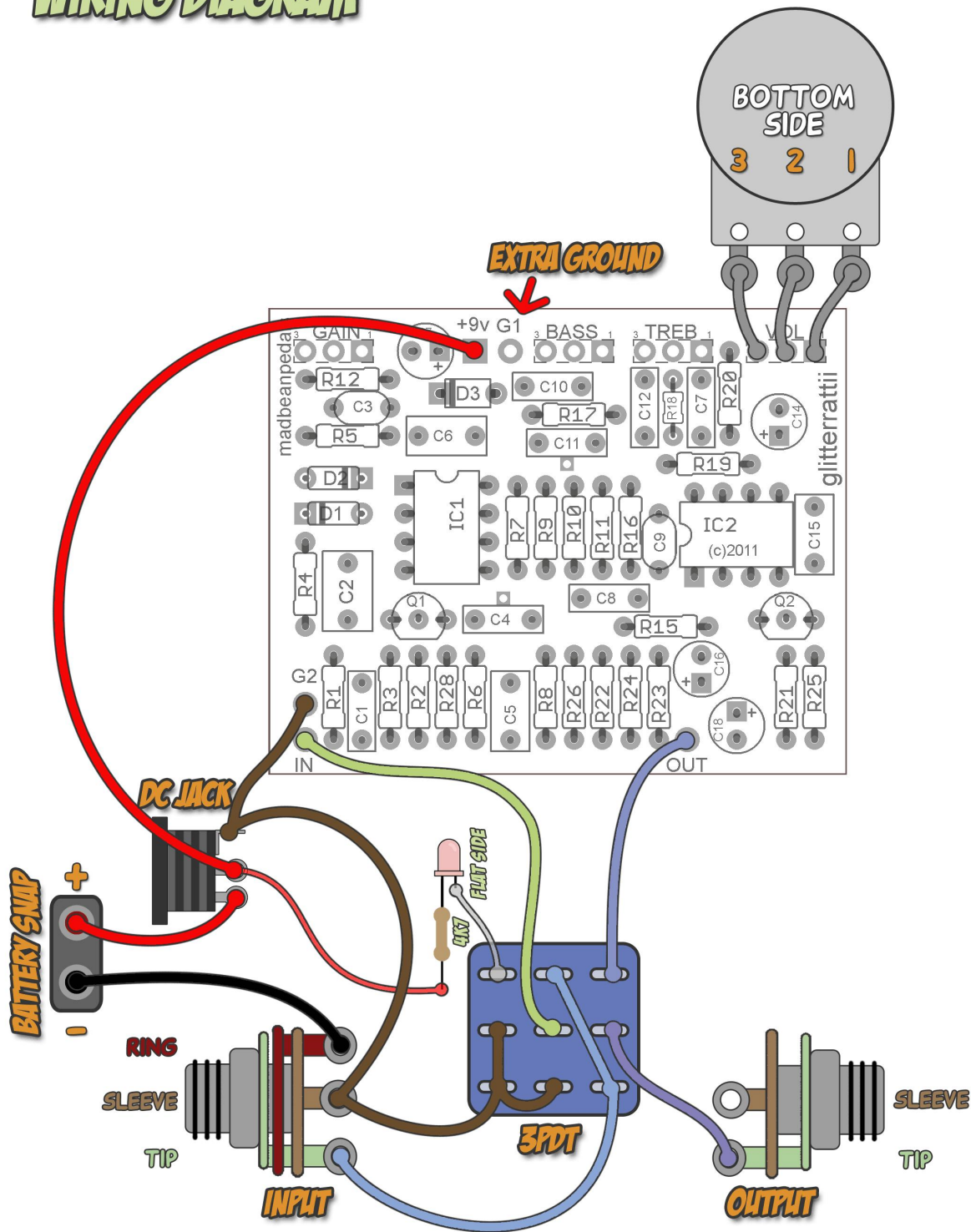
Resistors		Caps		Diodes	
R1	1M	C1	22n	D1, D2	1N4148-2
R2	470k	C2	1uF	D3	1N4005
R3	10k	C3	51pf	Transistors	
R4	10k	C4	47n	Q1, Q2	2N5088
R5	10k	C5	220n	ICs	
R6	4k7	C6	220n	IC1	JRC4558
R7	1k	C7	4n7	IC2	TL072
R8	10k	C8	100n	Pots	
R9	1k	C9	151pf	GAIN	1MB
R10	19k	C10	33n	BASS	50kB
R11	1k	C11	33n	TREB	50kB
R12	220R	C12	4n7	VOL	100kB
R15	10k	C14	10uF		
R16	47k	C15	100n		
R17	4k7	C16	10uF		
R18	4k7	C17	10uF		
R19	33k	C18	10uF		
R20	10k				
R21	470k				
R22	10k				
R23	47R				
R24	100k				
R25	10k				
R26	10k				
R28	1k				

TITLE	CLITTERATI	
	© 2011 - MUDRANFEDS	
DATE		04.03.11



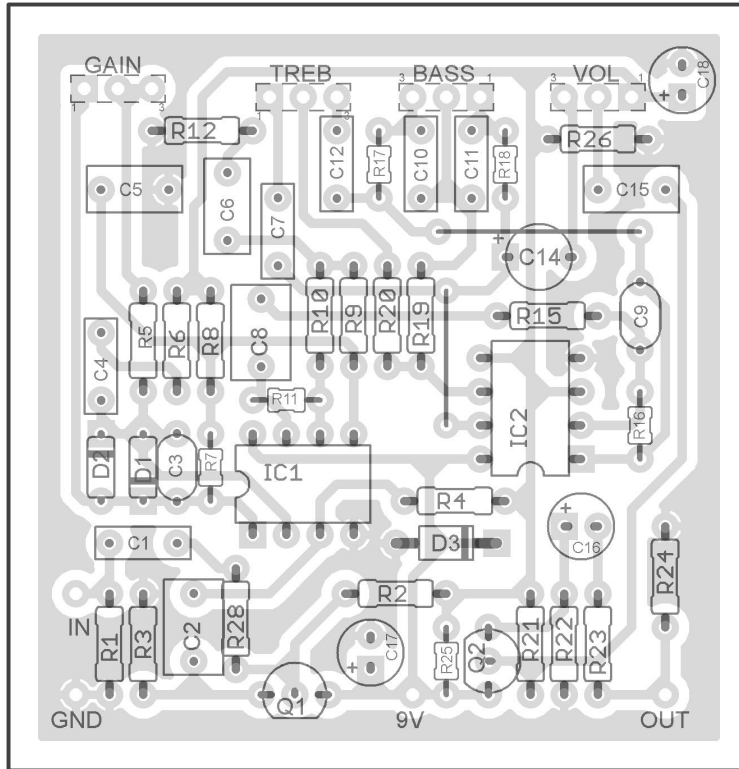
GLITTERATTII

WIRING DIAGRAM

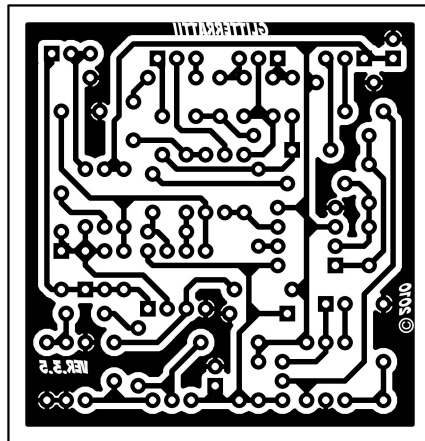


SINGLE SIDED VERSION FOR ETCHING

NOTE THAT THE TREBLE AND GAIN POTS ARE WIRED 1-2-3, AND THE BASS AND VOLUME ARE 3-2-1 ON THIS VERSION.
THERE ARE TWO JUMPERS ON THE PCB!



2.22" W x 2.29" H (including borders)



This product is intended for DIY use only. Commercial use, including the sale of PCBs, kits or pedals utilizing this information, is strictly prohibited.