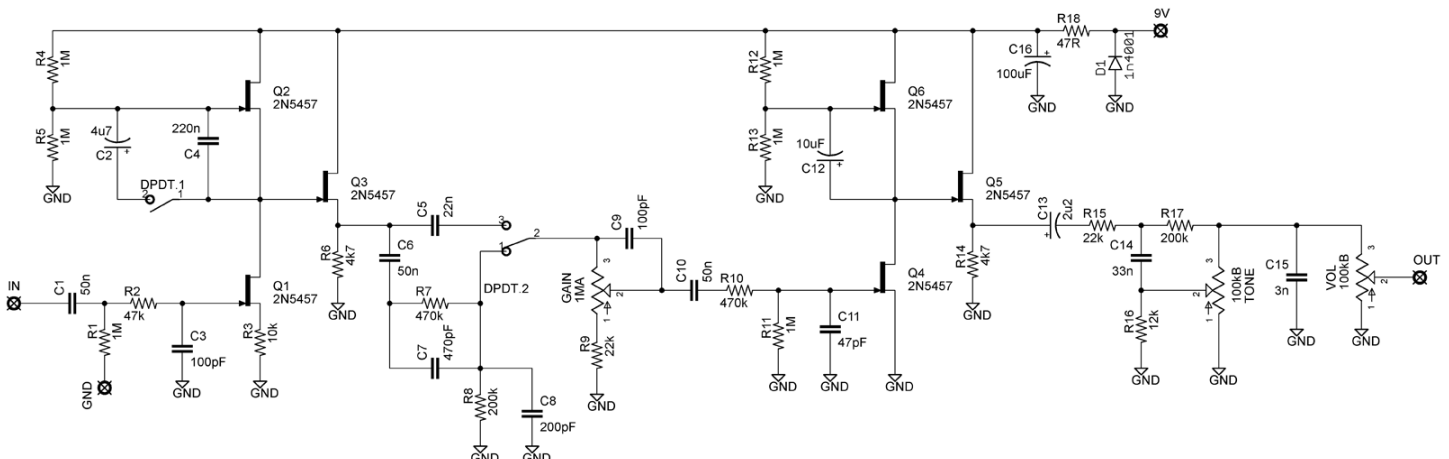
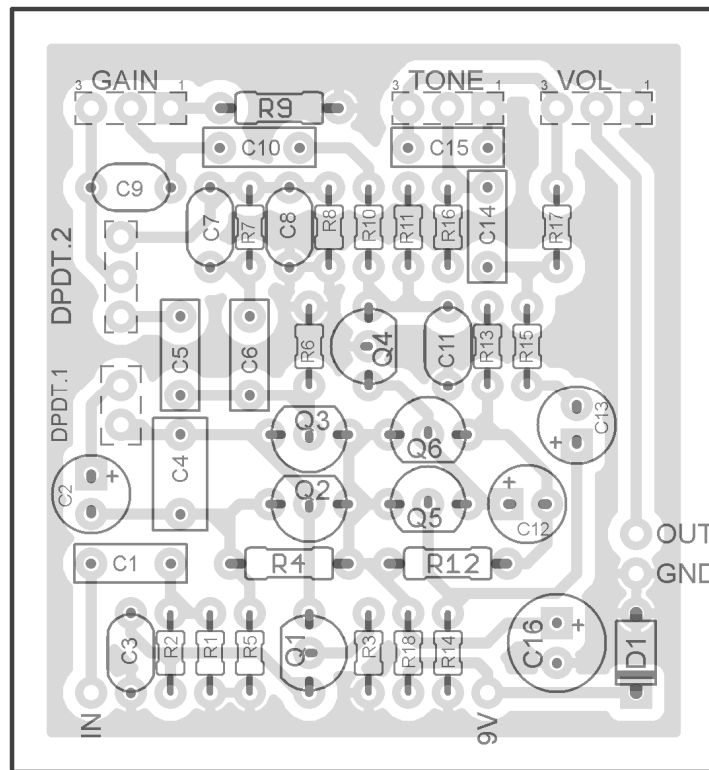


(based on the Catalinbread [Dirty Little Secret](#))
PCB artwork ©2010 madbeanpedals
Ver.2 04.07.10

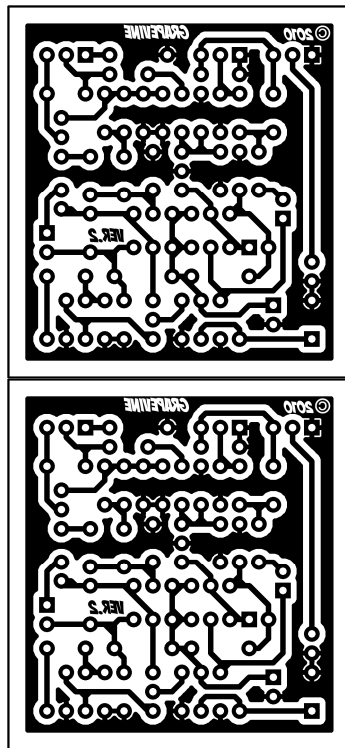
Note: Catalinbread supports the use of this design for non-commercial, DIY purposes. If you like this project, consider visiting the [Catalinbread website](#) to check out their many fine products.

Please note that Catalinbread does not provide any type of support regarding this information, or any of the madbeanpedals PCB products. Please visit the madbeanpedals forum for any technical assistance you require.

Thanks to Nicholas Harris for supporting the DIY stompbox community!



R1	1M	C1	50n
R2	47k	C2	4u7
R3	10k	C3	100pF
R4	1M	C4	220n
R5	1M	C5	22n
R6	4k7	C6	50n
R7	470k	C7	470pF
R8	200k	C8	200pF
R9	22k	C9	100pF
R10	470k	C10	50n
R11	1M	C11	47pF
R12	1M	C12	10uF
R13	1M	C13	2u2
R14	4k7	C14	33n
R15	22k	C15	3n
R16	12k	C16	100uF
R17	200k		
R18	47R	D1	1n4001
DPDT	On-On	TONE	100kB
		VOL	100kB
Q1-Q6	2N5457	GAIN	1MA

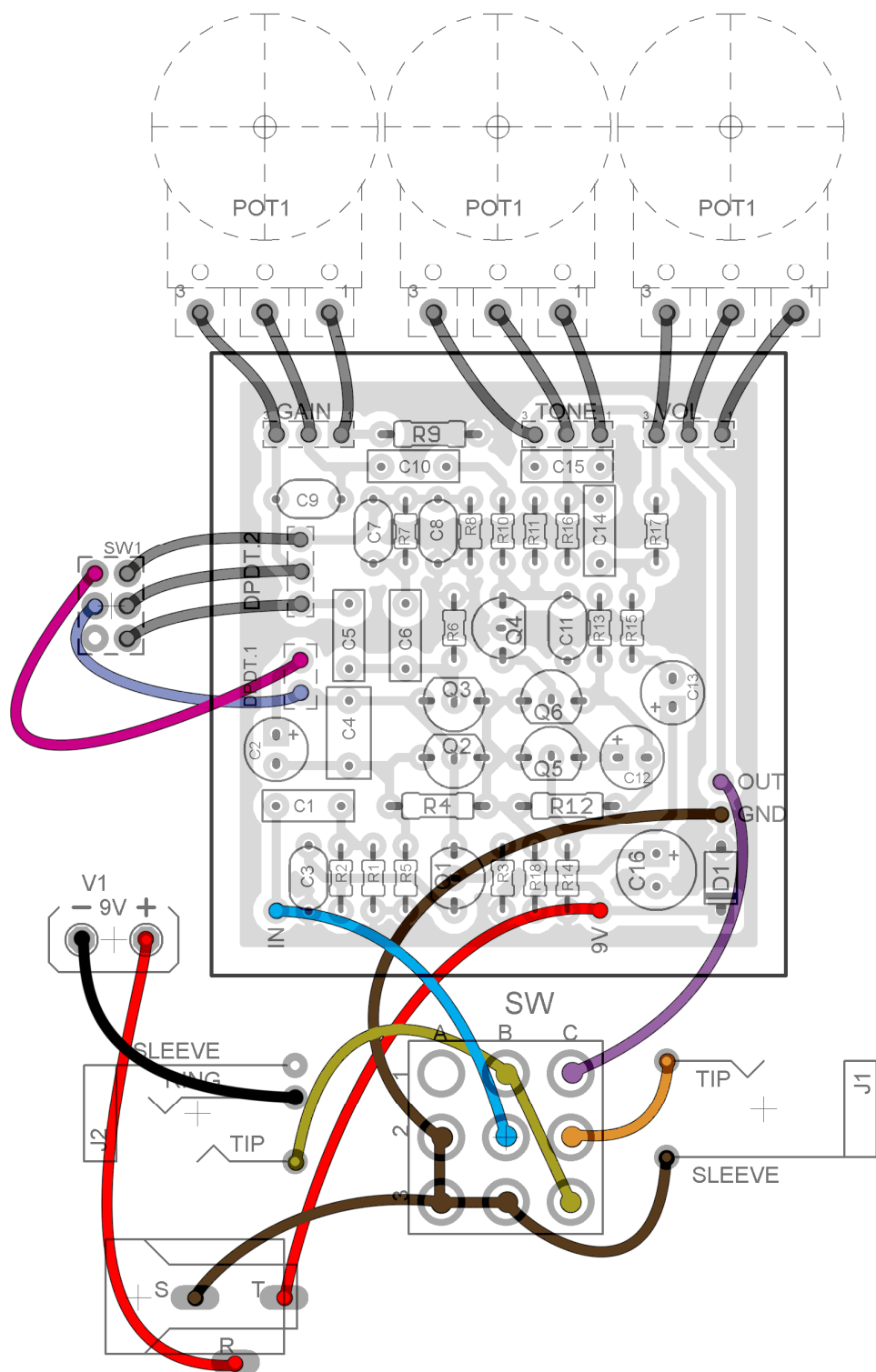


Notes

- The 50n and 3n caps can be found here:

<http://www.mouser.com/ProductDetail/Xicon/140-PF1H503K/?qs=sGAEpiMZZMvOcEq4GH1AAiiKecv28F%2ffUNb4iJ3adWY%3d>
<http://www.mouser.com/ProductDetail/Xicon/140-PF2A302F/?qs=sGAEpiMZZMvOcEq4GH1AAp6xkCMmLRF5LNM8XCmxT60%3d>

- LED wiring not pictured.



This drilling template is provided “as is”. Use at your own risk!