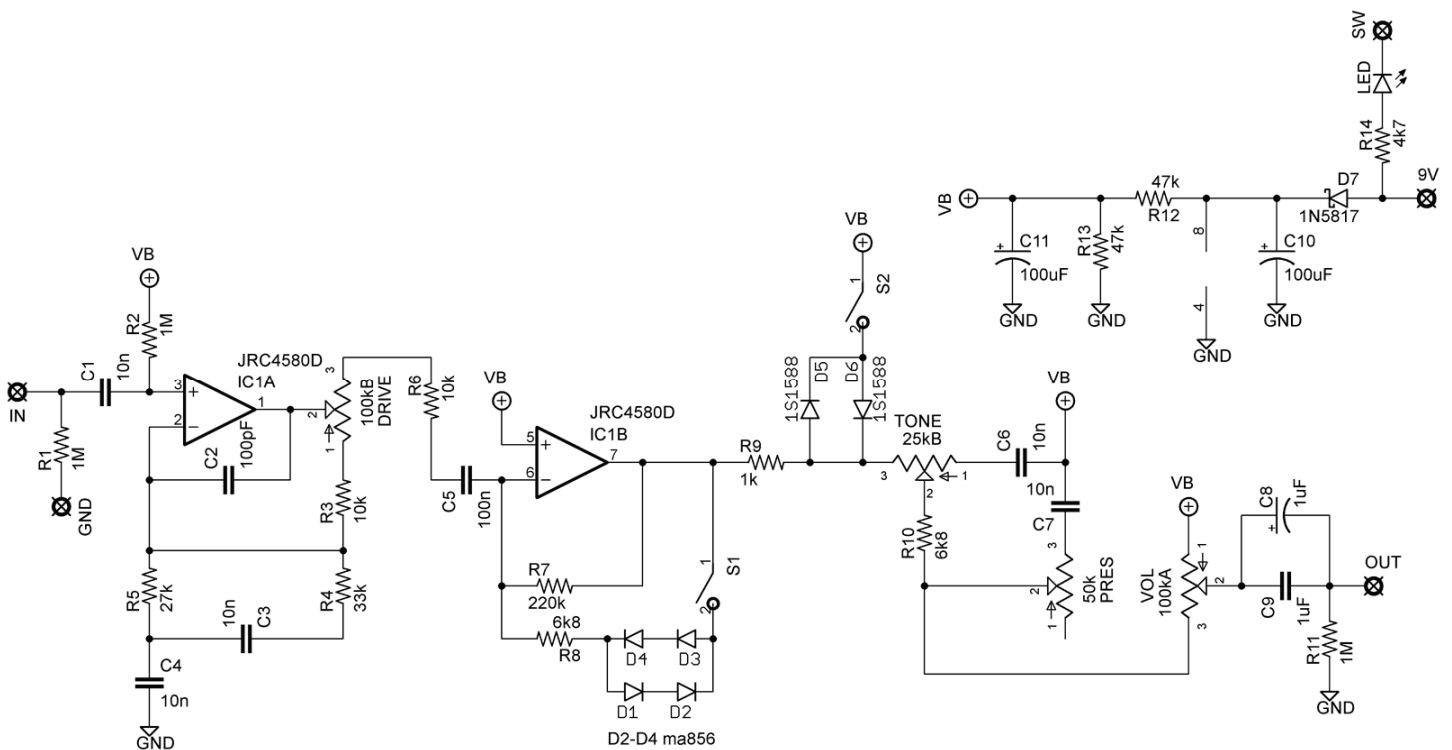
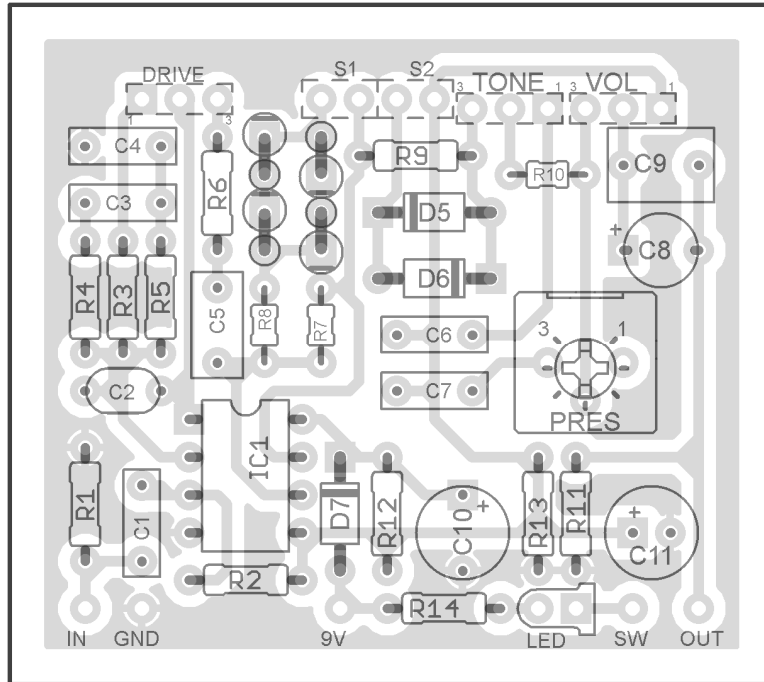


KING OF KLONES

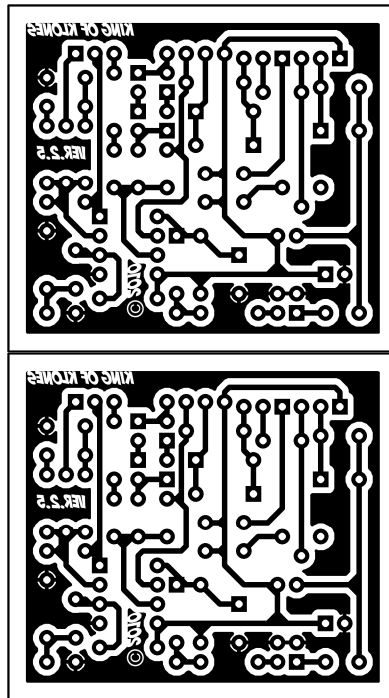
(Based on the analogman King of Tone – single channel version)

©2010 madbeanpedals

Ver 2.5 04.18.10

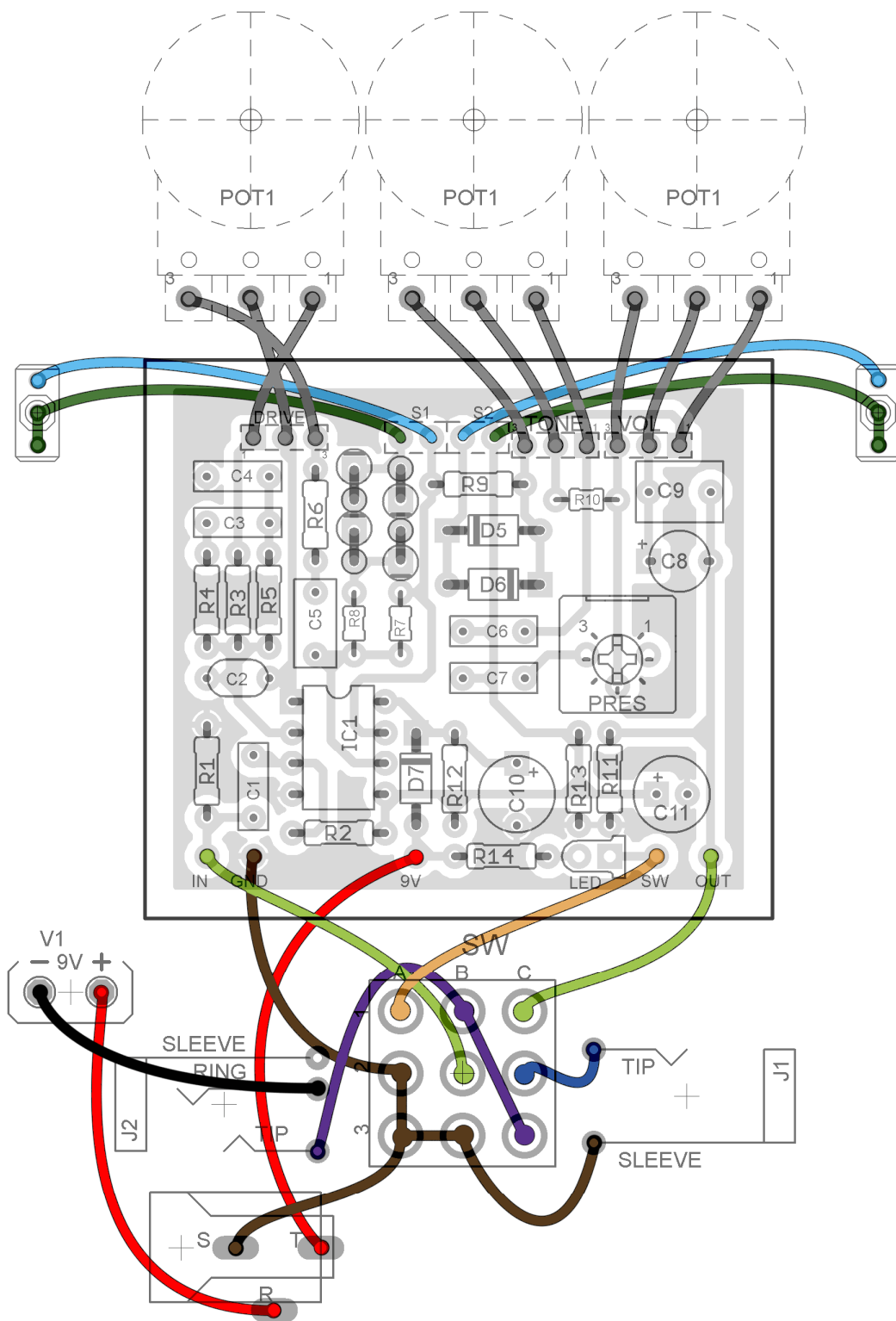


R1	1M	C1	10n	D1 - D4	ma856
R2	1M	C2	100pF	D5, D6	1S1588
R3	10k	C3	10n	D7	1N5817
R4	33k	C4	10n		
R5	27k	C5	100n	S1, S2	SPST
R6	10k	C6	10n		
R7	220k	C7	10n	IC1	JRC4580D
R8	6k8	C8	1uF		
R9	1k	C9	1uF	DRIVE	100kB
R10	6k8	C10	100uF	PRES	50k Trim
R11	1M	C11	100uF	TONE	25kB
R12	47k			VOL	100kA
R13	47k				
R14	4k7				

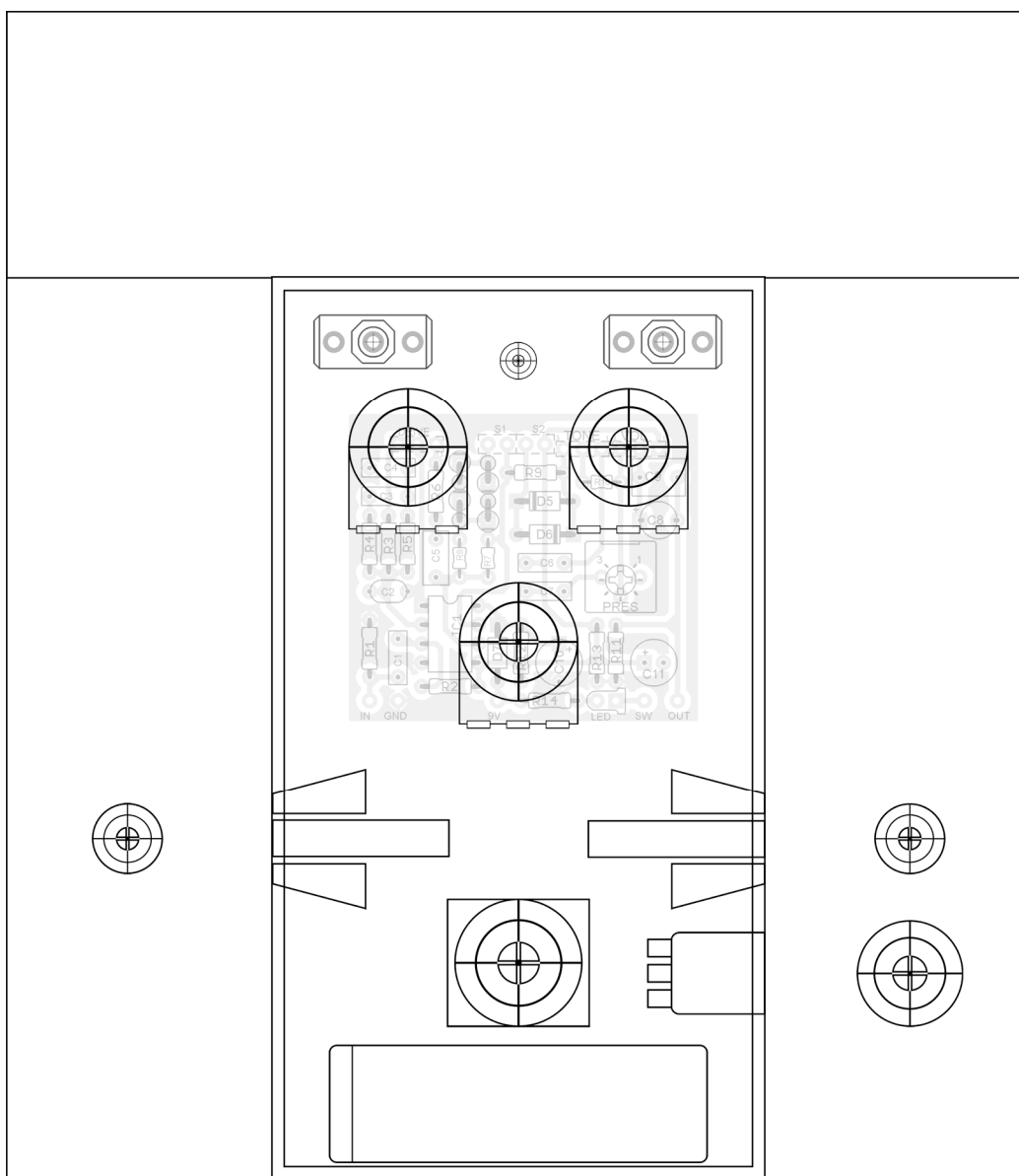


Notes

- You can try a number of diode subs if you don't have the ma856 or 1s1588. 1n914's and 1N4001's work well, resp. You can also sub 1N4001 for D7.
- ma856:
http://www.effectsconnection.com/oscommerce/product_info.php?cPath=38&products_id=451
- 1s1588:
http://www.pedalpartsplus.com/mm5/merchant.mvc?Screen=PROD&Store_Code=PPP&Product_Code=4024&Category_Code=DIO
- 4580D IC:
<http://www.mouser.com/ProductDetail/NJR/NJM4580D/?qs=sGAEpiMZZMtCHixnSjNA6A%252b2%2fUvqazyEfhkuttGFpDc%3d>
- You can use either SPST or SPDT for the two clipping switches.



125B Enclosure



This drilling template is provided “as is”. Use at your own risk!