

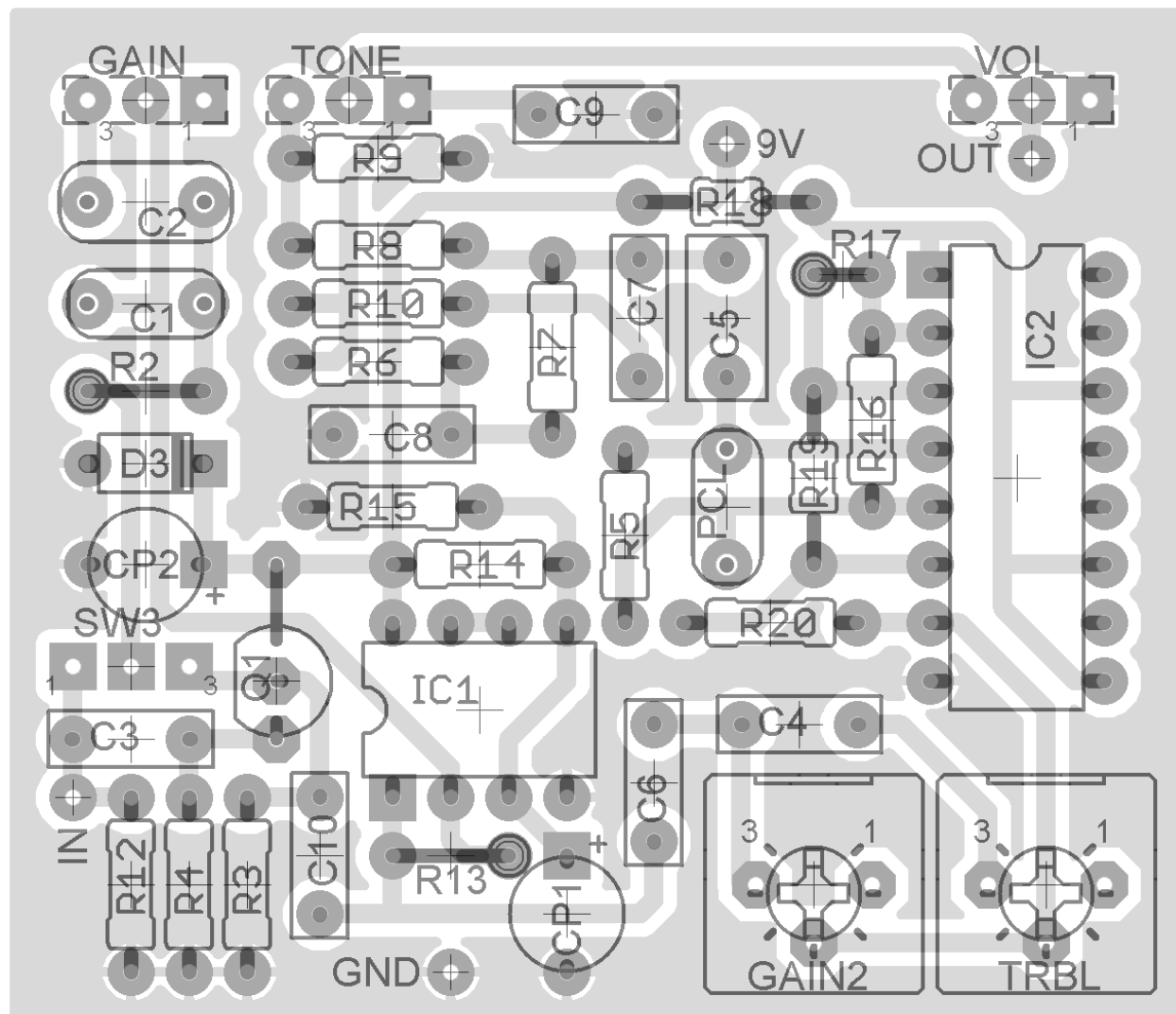
MYSTERIOSO JR.

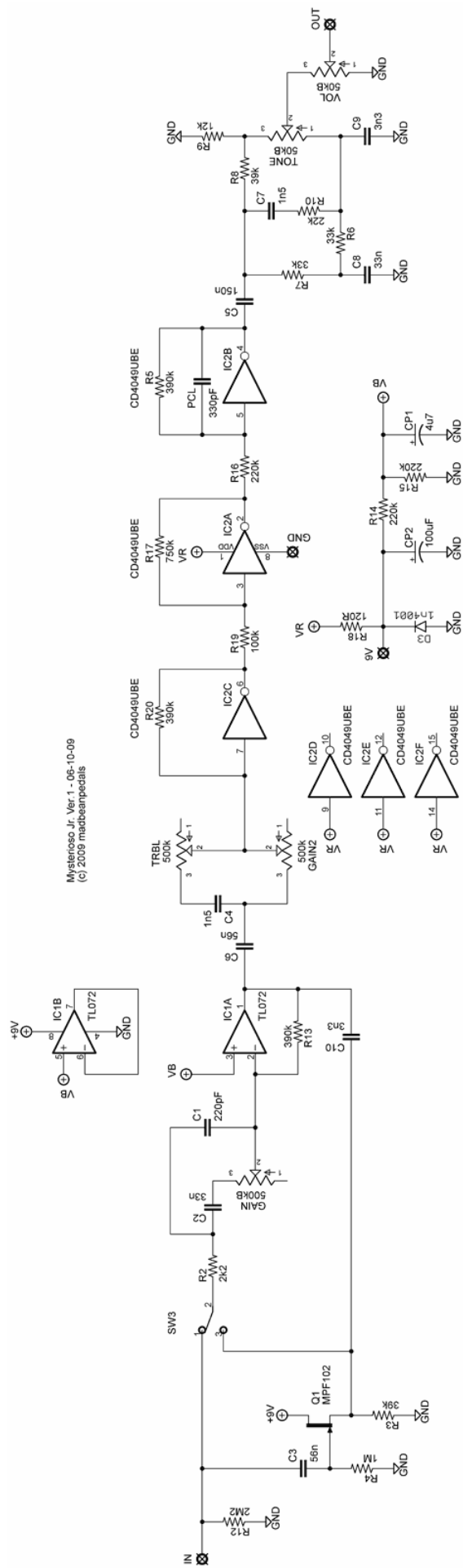
(Based on the Blackstone Appliances 2sv3.3 Mosfet Overdrive)

COMPONENTS + LAYOUT

VER.1 06/10/09

SINGLE CHANNEL VERSION!





Part	Value
R2	2k2
R3	39k
R4	1M
R5	390k
R6	33k
R7	33k
R8	39k
R9	12k
R10	22k
R12	2M2
R13	390k
R14	220k
R15	220k
R16	220k
R17	750k
R18	120R
R19	100k
R20	390k
C1	220pF
C2	33n
C3	56n
C4	1n5
C5	150n
C6	56n
C7	1n5
C8	33n
C9	3n3
C10	3n3
CP1	4u7
CP2	100uF
PCL	330pF
D3	1n4001
IC1	TL072
IC2	CD4049UBE
Q1	MPF102
SW3	SPDT
VOL	50kB
TONE	50kB
GAIN	500kB
GAIN2	500k TRIM
TRBL	500k TRIM

Notes

- Try changing Gain2 from a trim pot to an external pot. It gives a nice boost when more gain is needed. At maximum, it will get very fuzzy and may cause some oscillation.
- SW3 toggles between buffered and non-buffered input.

