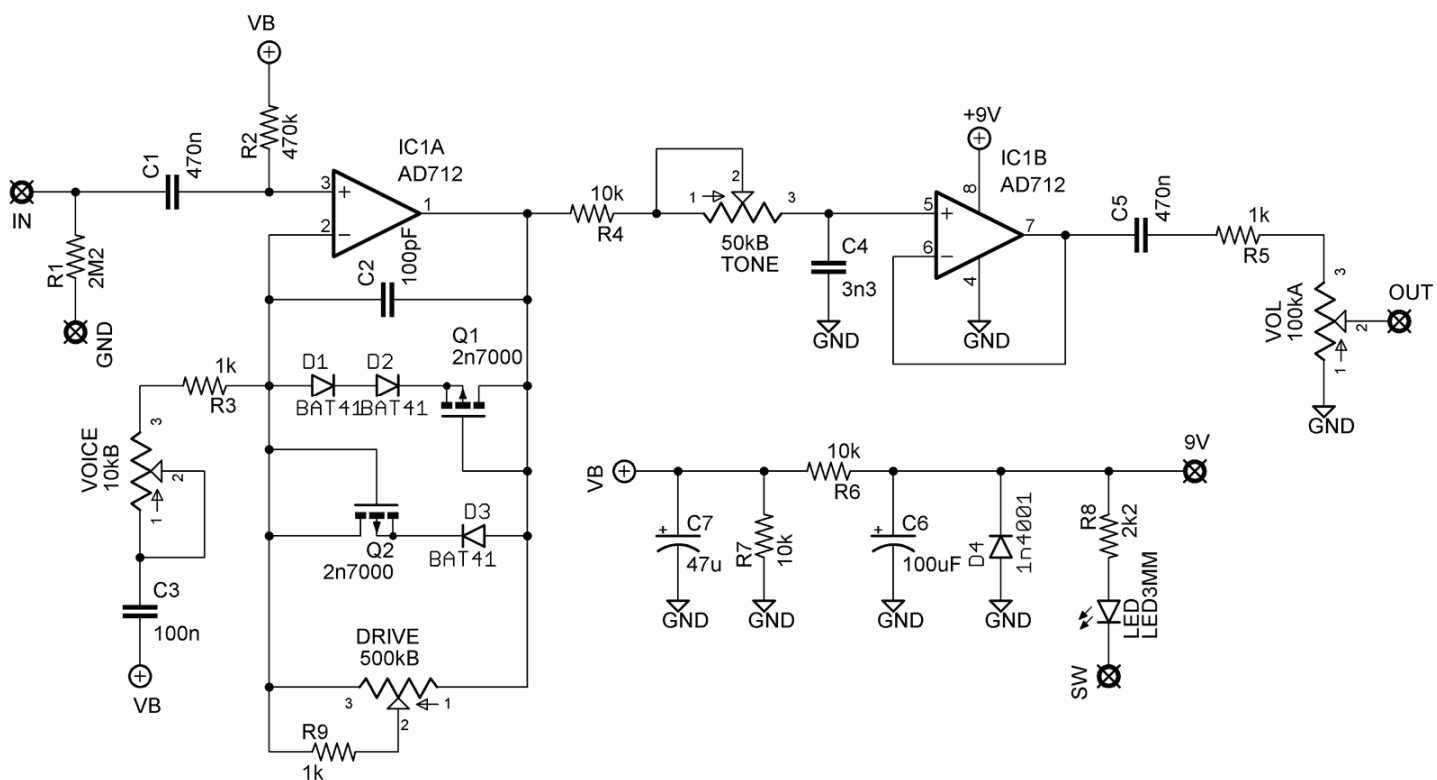
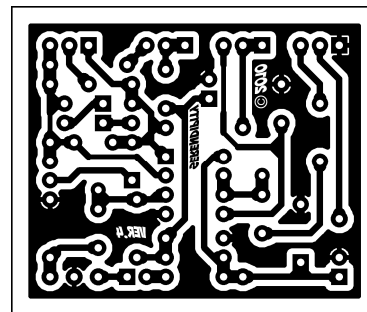
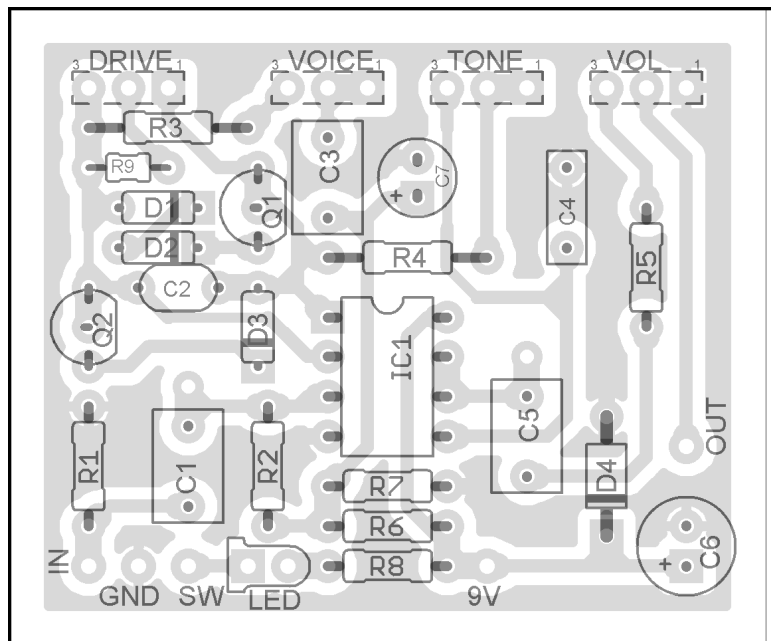
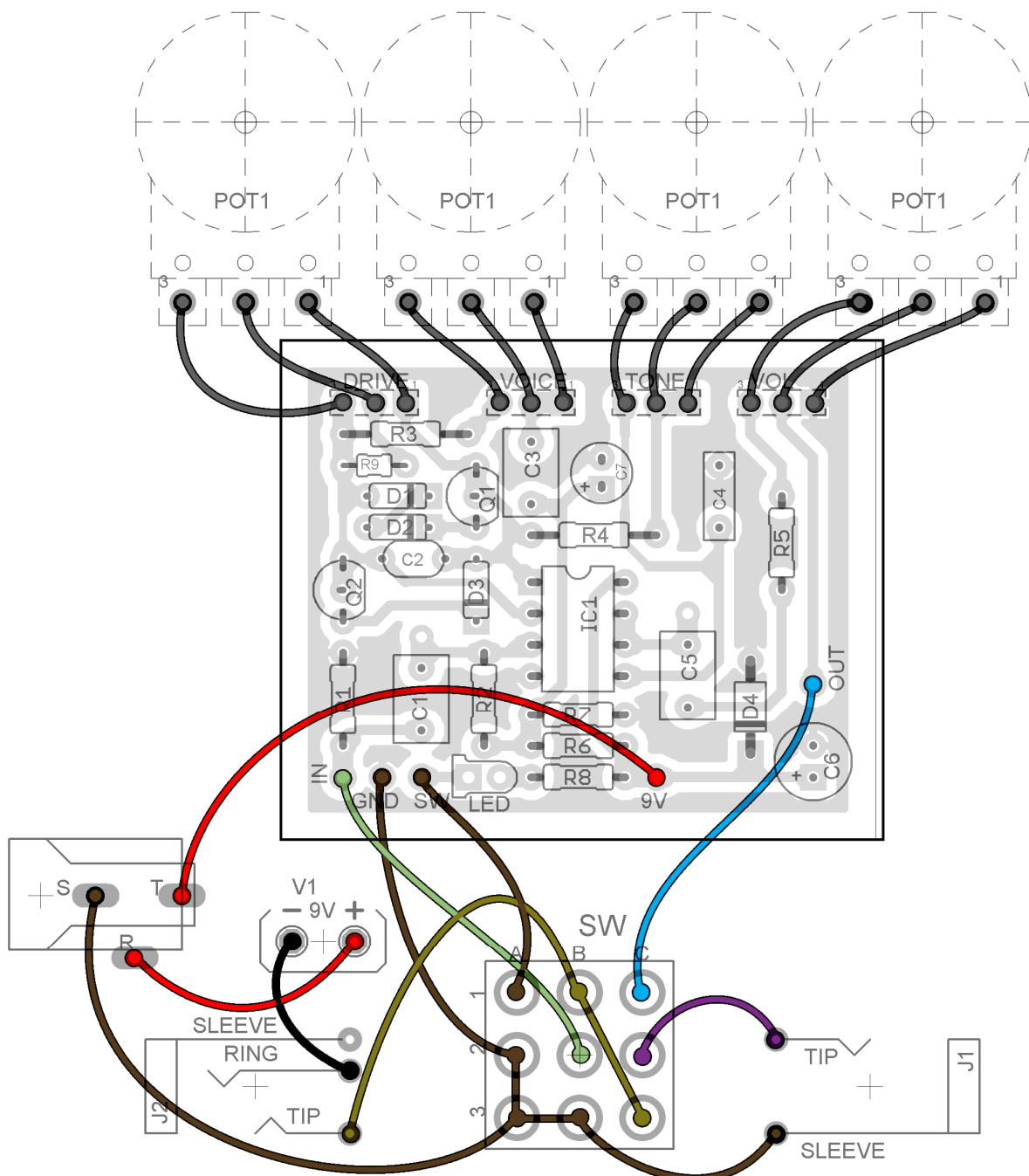


SERENDIPITY

(based on the Hermida ZenDrive)
PCB artwork ©2010 madbeanpedals
Ver.4 03.15.10



IC	
IC1	AD712
Transistors	
Q1 -Q2	2n7000
Pots	
DRIVE	500k Ω
TONE	50k Ω
VOICE	10k Ω
VOL	100k Ω



Notes

- The stock IC will be hard to find in the States. You can sub another, if you like. A JRC4558 sounds great in this circuit. So does a TL2272.
- You can sub other germanium type diodes for the BAT41 such as the 1n34a.
- The extra pads above C1 and C5 are to accommodate large poly film caps, if you prefer to use those over box caps.

