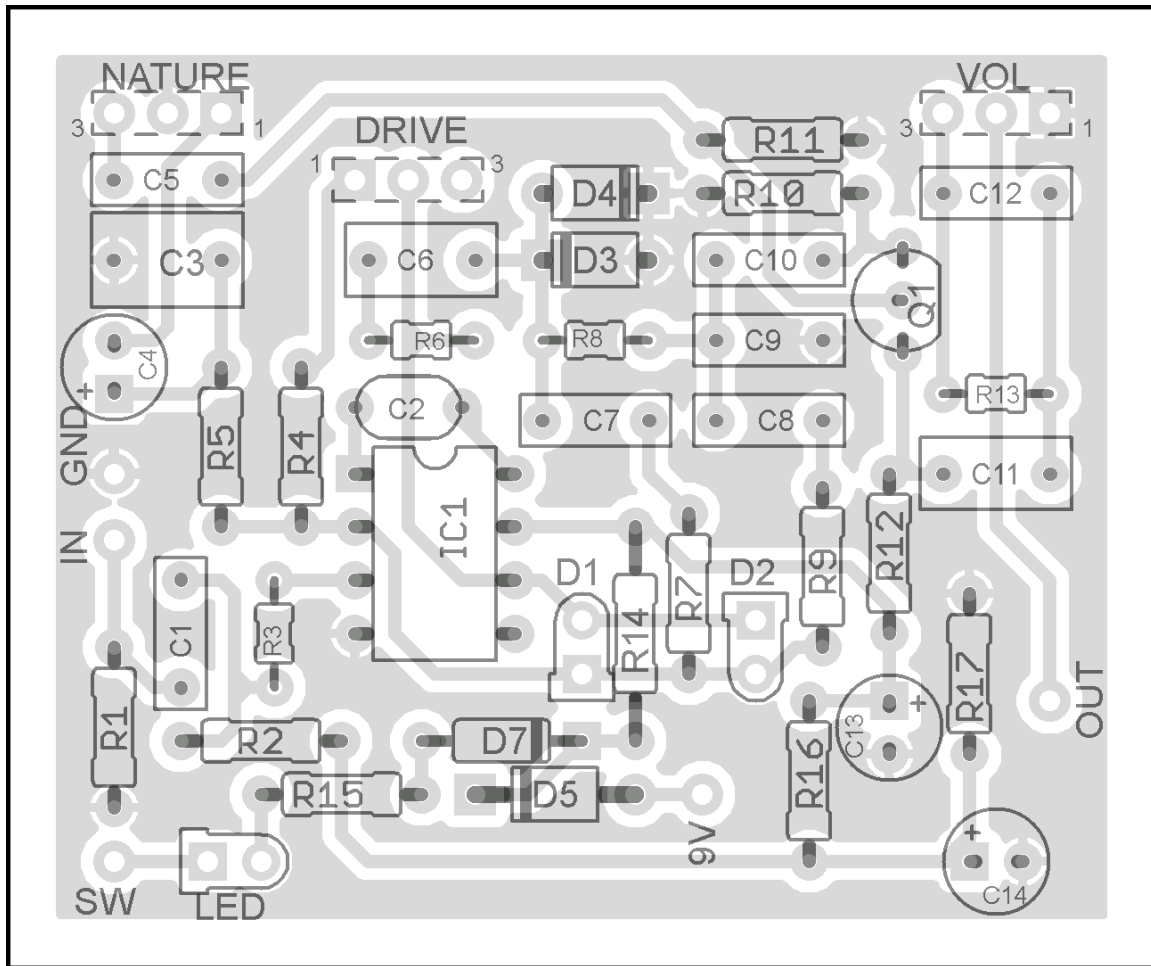


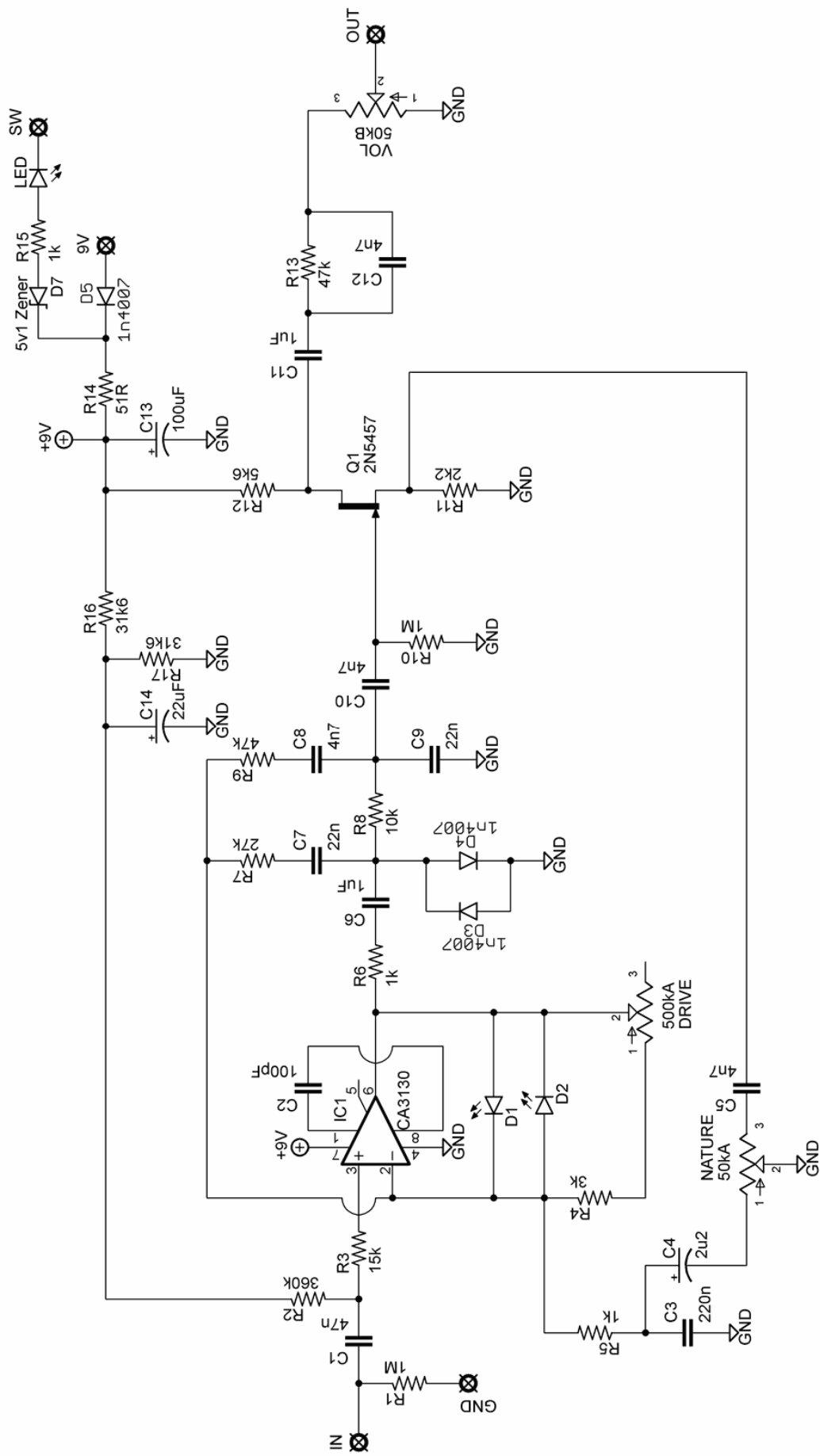
# YELLOW SHARK

(Based on the BJT Honeybee)

©2009 madbeanpedals [brian@madbeanpedals.com](mailto:brian@madbeanpedals.com)

Ver.2 – 10/10/09 – corrected for new tracing info





Part	Value
R1	1M
R2	360k
R3	15k
R4	3k
R5	1k
R6	1k
R7	27k
R8	10k
R9	47k
R10	1M
R11	2k2
R12	5k6
R13	47k
R14	51R
R15	1k
R16	31k6
R17	31k6

C1	47n
C2	100pF
C3	220n
C4	2u2
C5	4n7
C6	1uF
C7	22n
C8	4n7
C9	22n
C10	4n7
C11	1uF
C12	4n7
C13	100uF
C14	22uF

IC1	CA3130
Q1	2N5457

D1- D2	Green LED
D3 - D5	1n4007
D7	5v1 Zener

VOL	50kB
NATURE	50kA
DRIVE	500kA

### Mods

Try 47n for C5 (from Bajaman)