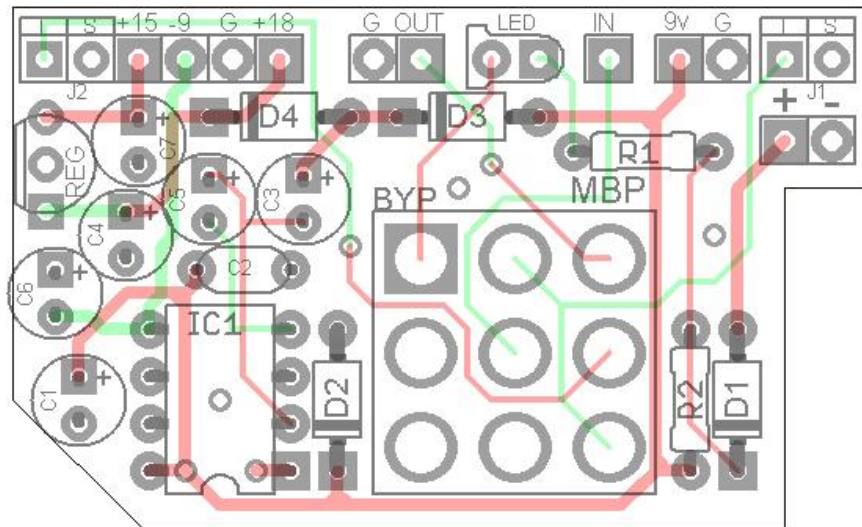
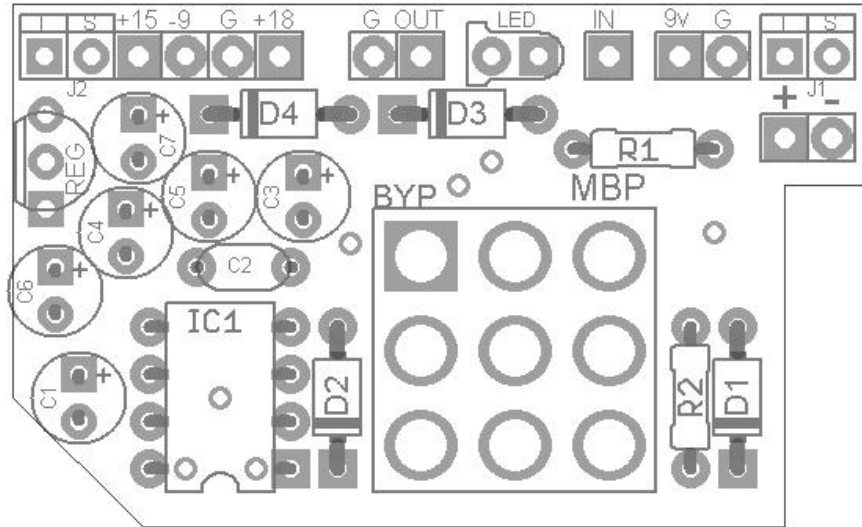


3PRR

FX TYPE: Utility

© 2014 madbeanpedals

1.82"W x 1.11"H

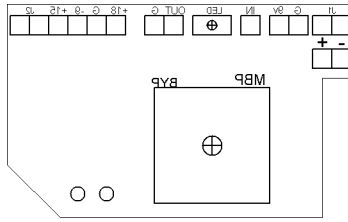


Terms of Use: You are free to use purchased **3PRR** circuit boards for both DIY and small commercial operations. You may not offer **3PRR** boards for resale or as part of a "kit" in a commercial fashion. Peer to peer re-sale is, of course, okay.

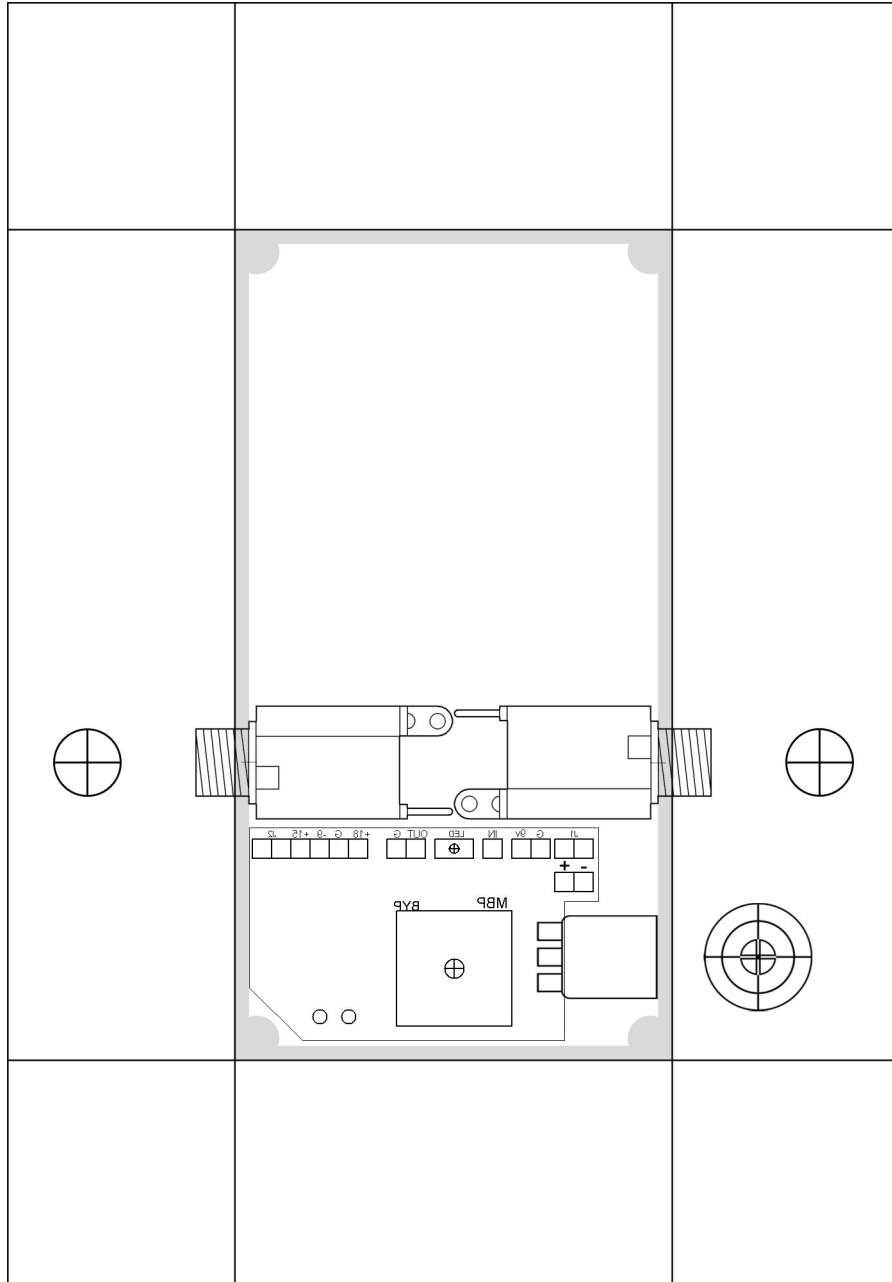
Resistors	
R1	4k7
R2	10R
Caps	
C1	47uF
C2	100n
C3	10uF
C4	10uF
C5	10uF
C6	10uF
C7	10uF
Diodes	
D1	1N5817
D2	12v Zener
D3	1N5817
D4	1N5817
LED	3MM/5MM
Regulator	
REG	LM78L15
IC	
IC1	Charge Pump
Switch	
BYP	3PDT

Value	QTY	Type	Rating
10R	1	Carbon / Metal Film	1/4W
4k7	1	Carbon / Metal Film	1/4W
100n	1	Film / MLCC	25v
10uF	5	Electrolytic	25v
47uF	1	Electrolytic	25v
1N5817	3		
12v Zener	1		
LM78L15	1	T0-92	
Charge Pump	1	*see notes	
LED	1	3mm or 5mm	
3PDT	1	Solder Lug Footswitch	

Actual Size



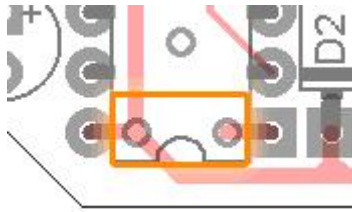
1590B
4.64"W x 6.68"H



This is the top down view looking at the front face of the 1590B enclosure.

Download the Photoshop template for this guide here:
http://www.madbeanpedals.com/projects/3PRR/3PRR_Drill.zip

You can use any of the following charge pumps: MAX1044**CPA**, TC1044**SCPA**, ICL7660**SCPA**, and the LT1054. There are two small pads connected to pins 1 and 8 of IC1. These pads must be jumpered for all the charge pumps EXCEPT the LT1054. Do not jumper the pads for the LT1054.



You only need to populate the charge pump parts for the function you require

- 1) -9v operation: leave off D3, D4, C3, C4, REG, and C7.
- 2) +18v operation: leave off C6, REG and C7.
- 3) +15 (or +12v) operation: leave off C6.

This wiring diagram shows what you will see inside the enclosure.

